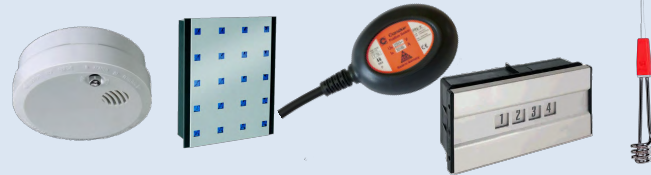


Power Distribution



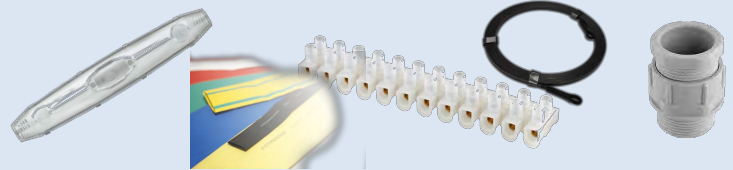
Home Accessories



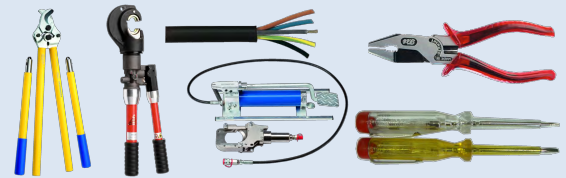
Plugs and Switches



Installation Material



Cables and Accessories



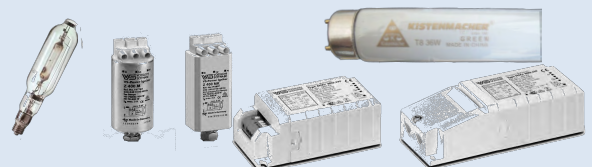
Fuses and Circuit Breakers



Time Switches and KWH Meters



Lamps and Accessories



Lighting



KISTENMACHER Cable Reel

- cable reel body made of rust-resistant and galvanised steel
- with 4 x Schuko socket outlets with self-closing cover providing protection against dust and contamination
- ergonomic handle and axle for precision cable management when winding and unwinding
- with safety cut-out protection



25 mtr

50 mtr



Art. No.	Cable	Length	Dia
1198057	H05VV-F 3G1,5	25 mtr	240 mm
1195067	H05VV-F 3G1,5	50 mtr	290 mm

Schuko



galvanised steel body

Garant Cable Reel

- with 4 x Schuko socket outlets with self-closing cover providing protection against dust and contamination
- ergonomic handle and axle for precision cable management when winding and unwinding
- galvanised steel frame
- with safety cut-out protection



25 mtr

50 mtr



Art. No.	Cable	Length	Dia
1198550	H05VV-F 3G1,5	25 mtr	240 mm
1195066	H05VV-F 3G1,5	50 mtr	290 mm

Schuko



galvanised steel body

25 mtr

50 mtr



Art. No.	Cable	Length	Dia
1215056	H05VV-F 3G1,5	25 mtr	240 mm
1205066	H05VV-F 3G1,5	50 mtr	290 mm

Schuko



break-resistant plastic body

Garant Bretec Cable Reel

with the unique Bretec anti cable twist system

- with 4 x Schuko socket outlets with self-closing cover providing protection against dust and contamination
- ergonomic handle and axle for precision cable management when winding and unwinding
- with safety cut-out protection



25 mtr

50 mtr



Art. No.	Cable	Length	Dia
1208850	H05VV-F 3G1,5	25 mtr	240 mm
1208860	H05VV-F 3G1,5	50 mtr	290 mm

Schuko



break-resistant plastic body

The one has got a Bretec;
the other's got a mess.



Industrial Cable Reels - BS

brennenstuhl®



KISTENMACHER Cable Reel

- cable reel body made of rust-resistant and galvanised steel
- with 3 x BS socket outlets 240 V with self-closing cover providing protection against dust and contamination
- ergonomic handle and axle for precision cable management when winding and unwinding
- with safety cut-out protection



25 mtr
50 mtr



Art. No.	Cable	Length	Dia
1198057	H05VV-F 3G1,5	25 mtr	240 mm
1198067	H05VV-F 3G1,5	50 mtr	290 mm



galvanised steel body

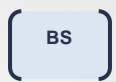
Garant Cable Reel

- galvanised frame
- with 3 x BS socket outlets 240 V with self-closing cover providing protection against dust and contamination
- ergonomic handle and axle for precision cable management when winding and unwinding
- with safety cut-out protection

25 mtr
50 mtr



Art. No.	Cable	Length	Dia
1198053	H05VV-F 3G1,5	25 mtr	240 mm
1198063	H05VV-F 3G1,5	50 mtr	290 mm



galvanised steel body

25 mtr
50 mtr



Art. No.	Cable	Length	Dia
1218053	H05VV-F 3G1,5	25 mtr	240 mm
1208063	H05VV-F 3G1,5	50 mtr	290 mm



break-resistant plastic body

Garant Bretec Cable Reel

with the unique Bretec anti cable twist system

- with 3 x BS socket outlets 240V with selfclosing cover providing protection against dust and contamination
- ergonomic handle and axle for precision cable management when winding and unwinding
- with safety cut-out protection



50 mtr
25 mtr
50 mtr



Art. No.	Cable	Length	Dia
1198863	H05VV-F 3G1,5	50 mtr	290 mm

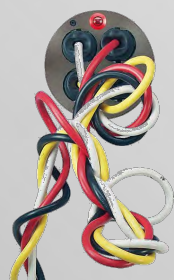


galvanised steel body

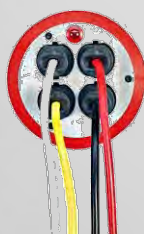
Art. No.	Cable	Length	Dia
1208853	H05VV-F 3G1,5	25 mtr	240 mm
1208863	H05VV-F 3G1,5	50 mtr	290 mm



break-resistant plastic body



without Bretec



with Bretec



Industrial Cable Reels - Schuko

brennenstuhl®


Vario Line

- robust casing, made of special plastic
- with 4 x Schuko socket outlets
- practical carrying handle
- twin feet ensure excellent stability
- with safety cut-out
- with childproof sockets

5 mtr

10 mtr

15 mtr

5,10,20 mtr



black / grey

black / blue

black / bordeaux / grey

black / blue / grey

Art. No.	Cable	Length	Colour
1092200	H05VV-F 3G1,5	5 mtr	black / grey
1093200	H05VV-F 3G1,5	10 mtr	black / grey
1093230	H05VV-F 3G1,5	10 mtr	black / blue / grey
1093270	H05VV-F 3G1,5	10 mtr	black / bordeaux / grey
1094200	H05VV-F 3G1,5	15 mtr	black / grey
1092106	H05VV-F 3G1,0	5 mtr	black / blue
1103466	H05VV-F 3G1,0	10 mtr	black / blue
1102206	H05VV-F 3G1,0	20 mtr	black / blue

Schuko

**break-resistant plastic body**

Comfort Line CL-S

- ergonomic design with a functional and practical rewind ring for easy handling
- with 4 x Schuko socket outlets
- with safety cut-out
- with childproof sockets

3 mtr



Art. No.	Cable	Length	Colour
1109220	H05VV-F 3G1,5	3 mtr	black / white
1109230	H05VV-F 3G1,5	3 mtr	black / blue

Schuko

**break-resistant plastic body**

Compact Cable Reel

- reel body made from break-resistant plastic, galvanized frame
- with 4 x Schuko socket outlets
- portable and light - lots of cable taking up little space
- with safety cut-out protection
- with childproof sockets

15 mtr



Art. No.	Cable	Length	Dia	Colour
1079180004	H05VV-F 3G1,5	15 mtr	180 mm	black
1079220004	H05VV-F 3G1,5	15 mtr	180 mm	white

Schuko

**break-resistant plastic body**

Super-Solid Cable Reel

- extra stable steel tube frame with new, exclusive stability
- exceptional robust carry handle with comfortable cable guide
- reel body made of special Breflex plastic, galvanized frame
- with 4 x Schuko socket outlets with self-closing covers providing protection against dust and contamination
- with safety cut-out protection

15 mtr

25 mtr

50 mtr



Art. No.	Cable	Length	Dia
1308810	H05VV-F 3G1,5	15 mtr	180 mm
1308420	H05VV-F 3G1,5	25 mtr	240 mm
1308960	H05VV-F 3G1,5	50 mtr	290 mm

Schuko

**break-resistant plastic body**

Industrial Cable Reels - BS

brennenstuhl®



Vario Line

- housing made of break-resistant plastic
- with 3 x BS socket outlets 240 V
- practical carrying handle
- twin feet ensure excellent stability
- easy to wind and rewind
- with safety cut-out protection



5 mtr

10 mtr

15 mtr

15 mtr

20 mtr

Art. No.	Cable	Length	Dia
1098203	H05VV-F 3G1,5	5 mtr	blue/ black
1108563	H05VV-F 3G1,5	10 mtr	blue/ black
1108903	H05VV-F 3G1,5	15 mtr	blue/ black
1108553	H05VV-F 3G1,0	10 mtr	grey/ black
1108203	H05VV-F 3G1,0	20 mtr	grey/ black

BS



break-resistant plastic body

Comfort Line CL-S

- ergonomic design with a functional and practical rewind ring for easy handling
- with 3 x BS socket outlets 240 V

3 mtr



Art. No.	Cable	Length	Colour
1109123	05VV-F 3G1,25	3 mtr	Black/ white

BS



break-resistant plastic body

Compact Cable Reel

- reel body made from break-resistant plastic, galvanized frame
- portable and light - lots of cable taking up little space
- with 3 x BS socket outlets 240V with self-closing cover providing protection against dust and contamination
- with safety cut-out protection

15 mtr



Art. No.	Cable	Length	Dia
1078183004	H05VV-F 3G1,5	15 mtr	180 mm

BS



break-resistant plastic body

Super-Solid Cable Reel

- extra stable steel tube frame with new, exclusive stability
- exceptional robust carry handle with comfortable cable guide
- galvanised frame
- with 3 x BS socket outlets 240V with self-closing cover providing protection against dust and contamination
- with safety cut-out protection
- ergonomic handle and axle for precision cable

50 mtr



Art. No.	Cable	Length	Dia
1309453	H05VV-F 3G1,5	50 mtr	290 mm

BS



galvanised steel body

50 mtr



Art. No.	Cable	Length	Dia
1308953	H05VV-F 3G1,5	50 mtr	290 mm

BS



break-resistant plastic body

Garant Garden Cable Reels

brennstuhl®


Garant G Multi-Purpose Reel

- reel body made from special Breflex plastic, galvanized frame
- with BS rubber socket 240 V
- highly flexible Breflex cable with plug and trailing socket
- with cable guide handle für precision cable management
- with safety cut-out protection

25 mtr



Art. No.	Cable	Length	Dia
1141743	HO5VV-F 3G1,5	25 mtr	240 mm

BS


*special Breflex plastic,
galvanized frame*

- with Schuko rubber socket

25 mtr

50 mtr



Art. No.	Cable	Length	Dia
1141740	HO5VV-F 3G1,5	25 mtr	240 mm
1181750	HO5VV-F 3G1,5	50 mtr	290 mm

Schuko


*special Breflex plastic,
galvanized frame*

Garant CEE Cable Reels

brennstuhl®


Garant 400 V CEE 1 IP44 for site & industry

water-jet protected version for universal outdoor use

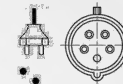
- 1 CEE-plug 400 V / 16 A
- 2 water-jet protected Schuko sockets 230 V
- 1 CEE socket 400 V / 16 A
- earthed sockets connected to separate phases
- reel body made from special Breflex plastic on a galvanized frame
- with 3-pin safety cut-out and thermal overload protection
- ergonomic handle and axle for precision cable management

20 mtr

30 mtr



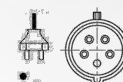
Art. No.	Cable	Length	Dia
1237990	H07RN-F 5G2,5	20 mtr	320 mm
1237980	H07RN-F 5G2,5	30 mtr	320 mm
1182720	H07RN-F 5G1,5	30 mtr	290 mm
1182730	H05VV-F 5G1,5	30 mtr	290 mm

Schuko/
CEE
*special Breflex plastic,
galvanized frame*

25 mtr



Art. No.	Cable	Length	Dia
1193200	H07RN-F 5G2,5	25 mtr	320 mm

Schuko/
CEE
galvanized steel body


Garant 230 V CEE 2 IP 44 for site & industry

water-jet protected version for universal outdoor use

- 1 CEE-plug 230 V / 16 A
- 2 CEE sockets 230 V / 16 A
- reel body made from special Breflex plastic, on a galvanized frame
- with single pole safety cut-off and overheating protection
- ergonomic handle and axle for precision cable management

25 mtr

40 mtr



Art. No.	Cable	Length	Dia
1182760	H07RN-F 3G2,5	25 mtr	290 mm
1238073	H05RR-F 3G2,5	40 mtr	320 mm

CEE 2


*special Breflex plastic,
galvanized frame*


Garant 110V CEE 2

for every requirement and use

- 2 CEE sockets 110 V / 16 A
- reel body made of special break resistant Breflex rubber
- robust, galvanized steel tube frame
- with cable guide handle für precision cable management
- with safety cut-out protection

25 mtr

50 mtr



Art. No.	Cable	Length	Dia
1148773	H05VV-F 3G1,5	25 mtr	240 mm
1138873	H05VV-F 3G1,5	50 mtr	290 mm
1131953	H05VV-F 3G2,5	25 mtr	240 mm

CEE 2


*special Breflex plastic,
galvanized frame*

British Standard with BS plug

brennenstuhl®



- with childproof sockets
- illuminated 2-pole ON/OFF safety switch
- earthed sockets, ideal for angular plugs



Premium Line - 4-way



Art. No.	Cable	Length / UP	Colour
115600 3 014	05VV-F 3G1.25	1,80 mtr / 4 pieces	black/black
115655 3 014	05VV-F 3G1.25	1,80 mtr / 4 pieces	grey/grey
115605 3 014	05VV-F 3G1.25	1,80 mtr / 4 pieces	black/grey
115622 3 014	05VV-F 3G1.25	1,80 mtr / 4 pieces	white/white

Premium Line - 4-way - long cable



Art. No.	Cable	Length / UP	Colour
115805 3 014	05VV-F 3G1.25	5 mtr / 4 pieces	black/grey

Premium Line - 6-way



Art. No.	Cable	Length / UP	Colour
115611 3 016	05VV-F 3G1.25	3 mtr / 4 pieces	black/black
115655 3 016	05VV-F 3G1.25	3 mtr / 4 pieces	grey/grey
115615 3 016	05VV-F 3G1.25	3 mtr / 4 pieces	black/grey
115622 3 016	05VV-F 3G1.25	3 mtr / 4 pieces	white/white
1158153018	05VV-F 3G1.25	5 mtr / 4 pieces	black/grey



Art. No.	Cable	Length / UP	Colour
1156053 0 24	05VV-F 3G1.25	3 mtr / 4 pieces	black/grey

Premium Line - 8-way



Art. No.	Cable	Length / UP	Colour
115600 3 0 18	05VV-F 3G1.25	3 mtr / 4 pieces	black/black
115655 3 0 18	05VV-F 3G1.25	3 mtr / 4 pieces	grey/grey
115615 3 0 18	05VV-F 3G1.25	3 mtr / 4 pieces	black/grey
115622 3 0 18	05VV-F 3G1.25	3 mtr / 4 pieces	white/white

Premium Alu-Line - 4 / 6 / 8-way

- attractive, timeless sturdy housing made from aluminium matt-finished surface



Art. No.	Cable	Length / UP	Colour
139100 3 014	05VV-F 3G1.25	1,80 mtr / 4 pieces	ALU/black
139100 3 016	05VV-F 3G1.25	3 mtr / 4 pieces	ALU/black
139100 3 018	05VV-F 3G1.25	3 mtr / 4 pieces	ALU/black

Schuko Standard with Schuko plug

brennenstuhl®



- with childproof sockets
- illuminated 2-pole ON/OFF safety switch
- earthed sockets at 45° angles, for angled plugs as well



Premium Line - 4-way



Art. No.	Cable	Length mtr / UP	Colour
1155220014	H05VV-F 3G1.5	1,8 mtr / 4 pieces	black/blue
1155110014	H05VV-F 3G1.5	1,8 mtr / 4 pieces	white/white
1155110014	H05VV-F 3G1.5	1,8 mtr / 4 pieces	black/black
1155550014	H05VV-F 3G1.5	1,8 mtr / 4 pieces	grey/grey
1155170014	H05VV-F 3G1.5	1,8 mtr / 4 pieces	black/bordeaux
1155150014	H05VV-F 3G1.5	1,8 mtr / 4 pieces	black/grey
1158150014	H05VV-F 3G1.5	5 mtr / 4 pieces	black/grey

Premium Line - 6-way



Art. No.	Cable	Length mtr / UP	Colour
1156030016	H05VV-F 3G1.5	3 mtr / 4 pieces	black/blue
1156220016	H05VV-F 3G1.5	3 mtr / 4 pieces	white/white
1156110016	H05VV-F 3G1.5	3 mtr / 4 pieces	black/black
1156550016	H05VV-F 3G1.5	3 mtr / 4 pieces	grey/grey
1156170016	H05VV-F 3G1.5	3 mtr / 4 pieces	black/bordeaux
1156150016	H05VV-F 3G1.5	3 mtr / 4 pieces	black/grey
1156150016	H05VV-F 3G1.5	5 mtr / 4 pieces	black/grey

Premium Line - 8-way



Art. No.	Cable	Length mtr / UP	Colour
1156150018	H05VV-F 3G1.5	3 mtr / 4 pieces	black/grey
1156220018	H05VV-F 3G1.5	3 mtr / 4 pieces	white/white
1156110018	H05VV-F 3G1.5	3 mtr / 4 pieces	black/black
1156550018	H05VV-F 3G1.5	3 mtr / 4 pieces	grey/grey
1158000018	H05VV-F 3G1.5	5 mtr / 4 pieces	black/grey

Premium Line - 10-way



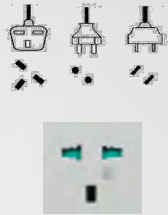
Art. No.	Cable	Length mtr / UP	Colour
1156150010	H05VV-F 3G1.5	3 mtr / 4 pieces	black/grey
1156220010	H05VV-F 3G1.5	3 mtr / 4 pieces	white/white
1156110010	H05VV-F 3G1.5	3 mtr / 4 pieces	black/black
1156550010	H05VV-F 3G1.5	3 mtr / 4 pieces	grey/grey

British Standard + Euro / US
all equipped with BS plug

brennenstuhl®



- 5 multi sockets
- illuminated 2-pole ON/OFF safety switch
- with childproof sockets



Multi socket outlet to fit
US plugs
SCHUKO plugs
BS plugs



Premium Multi-Line



Art. No.	Cable	Length / UP	Colour
1 55600 7 135	05VV-F 3G1.25	3 mtr / 4 pieces	black
1 55600 7 155	05VV-F 3G1.25	5 mtr / 4 pieces	black



Art. No.	Cable	Length / UP	Colour
1 556057 1 35	05VV-F 3G1.25	3 mtr / 4 pieces	black/grey
1 55605 7 155	05VV-F 3G1.25	5 mtr / 4 pieces	black/grey



Art. No.	Cable	Length / UP	Colour
1 55603 7 135	05VV-F 3G1.25	3 mtr / 4 pieces	black/blue



Art. No.	Cable	Length / UP	Colour
1 55655 7 135	05VV-F 3G1.25	3 mtr / 4 pieces	grey
1 556557 1 55	05VV-F 3G1.25	5 mtr / 4 pieces	grey



Art. No.	Cable	Length / UP	Colour
1 55650 7 135	05VV-F 3G1.25	3 mtr / 4 pieces	grey/black
1 55650 7 155	05VV-F 3G1.25	5 mtr / 4 pieces	grey/black



Art. No.	Cable	Length / UP	Colour
1 15653 7 135	05VV-F 3G1.25	3 mtr / 4 pieces	grey/blue

Alu Multi-Line



Art. No.	Cable	Length / UP	Colour
139100 7 135	05VV-F 3G1.25	3 mtr / 4 pieces	ALU/black
139100 7 155	05VV-F 3G1.25	5 mtr / 4 pieces	ALU/black

Office Multi-Line



Art. No.	Cable	Length / UP	Colour
1 15650 7 415	05VV-F 3G1.25	3 mtr / 4 pieces	grey/black



Art. No.	Cable	Length / UP	Colour
115605 7 415	05VV-F 3G1.25	3 mtr / 4 pieces	black/grey

British Standard with BS plug

brennenstuhl®

- with childproof sockets
- illuminated 2-pole ON/OFF safety switch
- competitively priced quality socket outlet rail for DIY, home and office



Eco-Line - 4-way


1,5 mtr

Art. No.	Cable	Length mtr / UP	Colour
1150403	05VV-F 3G1,25	1,5 mtr / 8 pieces	black
1150423	05VV-F 3G1,25	1,5 mtr / 8 pieces	white

Eco-Line - 6-way


1,5 mtr

Art. No.	Cable	Length mtr / UP	Colour
1159503	05VV-F 3G1,25	1,5 mtr / 8 pieces	black
1159523	05VV-F 3G1,25	1,5 mtr / 8 pieces	white

Eco-Line - Individually switched 4-way extension socket


2 mtr

Art. No.	Cable	Length mtr / UP	Colour
1150623441	05VV-F 3G1,25	1,5 mtr / 20 pieces	white

Primera-Line - 4-way

- with cable clip for the storage of surplus cable
- option of variable cable output on both sides
- convenient spacing of the sockets


1,5 mtr

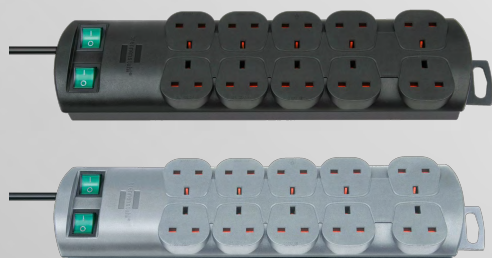
Art. No.	Cable	Length mtr / UP	Colour
1153303124	05VV-F 3G1,25	1,5 mtr / 4 pieces	black
1153393124	05VV-F 3G1,25	1,5 mtr / 4 pieces	silver

Primera-Line - 8-way


2 mtr

Art. No.	Cable	Length mtr / UP	Colour
1153303128	05VV-F 3G1,25	2 mtr / 8 pieces	black
1153393128	05VV-F 3G1,25	2 mtr / 8 pieces	silver

Primera-Line - 10-way

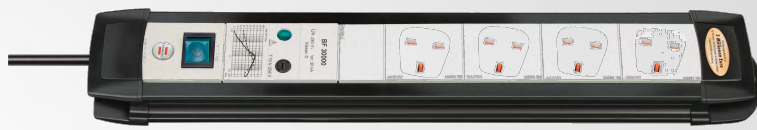

2 mtr

Art. No.	Cable	Length mtr / UP	Colour
1153303120	05VV-F 3G1,25	2 mtr / 10 pieces	black
1153393120	05VV-F 3G1,25	2 mtr / 10 pieces	silver



Premium-Line Surge Protection 30.000 A - 4-way

brennenstuhl®



Art. No.	Cable	Length / UP	Surge	Colour	Plug
1 15605 3 374	05VV-F 3G1,25	1,8 mtr / 2 pcs.	30 KA	black/grey	BS
1 15605 3 394 + EMVRFI Filter	05VV-F 3G1,25	3 mtr / 2 pcs.	30 KA	black/grey	BS



- The Brennenstuhl range of multi-way socket outlets with surge suppressor and lightning protection fuse offer effective protection against power surges and high voltage peaks.
- Unless connected appliances like your PC, TV, Hifi, fax machine or other sensitive electric appliances are not effectively protected, severe damage will be unavoidable. Most dangerous are very high voltage peaks caused by starting heavy machinery or by indirect lightning strikes.
- Safety elements like varistors or gas conductors are essential parts in order to divert voltage surges within milli-seconds through the earth connection. No destructive voltage peaks will therefore be able to reach the interior of your sensitive electric appliances. The modern and high quality safety elements used by Brennenstuhl guarantee effective protection against power surges and indirect lightning strikes up to 30.000 Amps.
- Light indicating surge voltage is active.
- Protects sensitive electronics from high frequency interference voltages.

Eco-Line Surge Protection 13.500 A - 5-way



Art. No.	Cable	Length / UP	Surge	Colour	Plug
1 15675 3	05VV-F 3G1,25	2 mtr / 4 pieces	9.000 A	Anthracite	BS



- the competitively priced quality socket outlet rail for DIY, home and office
- prevents damage of destruction from voltage peaks and provides effective protection against indirect lightning strikes.
- suitable for wall fixing
- light indicating surge voltage is active.
- illuminated 2-pole ON/OFF safety switch and surge neon indicator

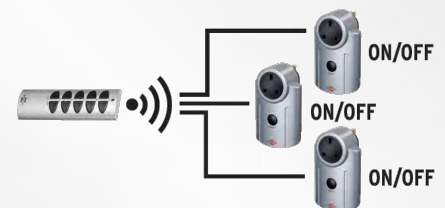
Primera-Line Remote Control SET RC 3600



- easy to use 4 channel hand transmitter to switch all channels
- remote control and receiver socket, any combination
- sockets can be operated manually
- selflearning coding, automatic storage
- **switching capacity 3120W**
- range up to 25 mtr (frequency 433,92 Mhz)
- 12V battery (type A23) for remote control included
- childproof socket



Art. No.	UP	Plug
1 50747 3	6 pieces	BS
1 50747 0	1 piece	Schuko



Primera-Line Digital Weekly Timer DT



- extra large display for days, hours in 12 and 24 hour-format, minutes and seconds
- 20 ON/OFF programmes for day, hour and minute setting
- easy 4 button operation, summer / winter time, manual ON / OFF,
- shortest switching-time 1 minute
- countdown and random function
- Programm: interruption during operation is possible
- data memory in case of power cut
- childproof socket
- 2 batteries AG 13 (LR44) inclusive



Art. No.	UP	Plug
1 50750 3	6 pieces	BS
1 50750 0	2 pieces	Schuko

Smoke Detector

brennenstuhl®



Smoke

Smoke Alarm BR 1211 Interlink

- for a wireless radio network of up to 12 smoke detectors
- photoelectric detector, tested in accordance with EN 14604
- optical function display, with test button for the functional check
- inclusive mute switching function
- shrill acoustic alarm (85dB)
- acoustic signal when the battery is low
- 9V battery included

Art. No.	UP	Sound	Battery
1 29002 0	1 piece	85 dB	1x9V

networking



Smoke

Smoke Alarm BR 5232 connect 230V

- for the wired 230V networking, of up to 12 smoke detectors
- photoelectric detector, tested in accordance with EN 14604
- optical function display, with test button for the functional check
- inclusive mute switching function
- shrill acoustic alarm (85dB)
- acoustic signal when the battery is low
- 9V battery included

Art. No.	UP	Sound	Battery
1 29004 0	1 piece	85 dB	1x9V

networking



Smoke

Smoke Alarm BR 1201 Basic

- photoelectric detector, tested in accordance with EN 14604
- optical function display, with test button for the functional check
- shrill acoustic alarm (85dB)
- acoustic signal when the battery is low
- 9V battery included

Art. No.	UP	Sound	Battery
1 29001 0	1 piece	85 dB	1x9V



Smoke

Smoke Alarm BR 1221 longlife

- photoelectric detector, tested in accordance with EN 14604
- optical function display, with test button for the functional check
- inclusive mute switching function
- shrill acoustic alarm (85dB)
- acoustic signal when the battery is low
- inclusive 9V ultralife lithium battery

Art. No.	UP	Sound	Battery / life
1 29003 0	1 piece	85 dB	1x9V / 5 years
1 29080 0	1 piece	85 dB	1x9V / 10 years

Walkie-Talkie



PMR Walkie-Talkie TRX 3000

- communication up to a distance of 5km
- easy to use, small, handy and robust
- LC display with background lighting
- eight channels with automatic channel search
- four ring tones
- socket for headphone / microphone
- battery monitoring
- 8 AA batteries required per set (not included)



Art. No.	UP
1 29090 0	1 piece

Heat Detector



Heat

Heat Detector BH 1201

- warning light and acoustic signal
- short reaction time at a temperature increase to over 55°C
- function test button
- with battery monitoring feature
- 9V battery included
- for use in kitchen garage or in closed rooms where a smoke detector is not suitable because of the formation of steam from cooking, exhaust gases or dust

Art. No.	UP	Sound	Battery
1 29045 0	1 piece	85 dB	1x9V

Gas Detectors



Gas

Gas Detector BG 2201-2202

- use in kitchen, Holiday home, camping or boats
- early warning, reliable load alarm, with smallest traces of leaking
- visual monitoring by means of LEDs
- 12V power supply (direct), in caravan or by means of a 230V/12V DC mains adapter
- shrill alarm 85dB
- regular self testing

Art. No.	UP	Sound	Protects
1 29047 0	1 piece	85 dB	Natural Gas, Methane
1 29046 0	1 piece	85 dB	Propan + Butane

CO Detectors



Carbon

CO Detector BCN 1221

- use in garages, living quarters with open fire places/camping
- durable, modern electro-chemical sensor
- alarm signal and LED display
- regular self-testing
- shrill alarm 85dB
- warning signal when battery is running low
- battery operated 9V, can be installed anywhere

Art. No.	UP	Sound	Battery
1 29049 0	1 piece	85 dB	1x9V

Water Detectors



Water

Water Detector BW 1201

- warns immediately upon contact with water
- shrill alarm 85dB
- 9V battery included
- shrill alarm 85dB

Art. No.	UP	Sound	Battery
1 29061 0	1 piece	85 dB	1x9V

Fire Blankets BLD 01



Fire

Fire Blanket BLD-01

- certified DIN EN 1869:997
- high quality glass fibre
- both sides coated
- extinguish fires in seconds, ideal for home and work

Art. No.	UP	Packing	Size cm
1 29120 0	6 pieces	hardbox	100x100



300

Art. No.	Power	Colour	Size mm
300	220-240 V	White	160 x 160 x 45
300 BIV	220/127 V	White	160 x 160 x 45



white

Gold Plated Inlet

two note, electromechanical system
 connection: direct to mains
 220-240V AC, 220/127V AC



white



77

Art. No.	Power	Colour	Size mm
77 WE 240	220-240 V	white	113 x 80 x 42
77 GE 240	220-240 V	pastel yellow	113 x 80 x 42
77 GR 240	220-240 V	pale grey	113 x 80 x 42
77 WE BIV	220/127 V	white	113 x 80 x 42
77 GE BIV	220/127 V	pastel yellow	113 x 80 x 42
77 GR BIV	220/127 V	pale grey	113 x 80 x 42



pale grey



pastel yellow

two note, electromechanical system
 connection: direct to mains
 220-240V AC, 220/127V AC



white



85

Art. No.	Power	Colour	Size mm
85 WE 240	220-240 V	white	115 x 115 x 45
85 GE 240	220-240 V	pastel yellow	115 x 115 x 45
85 GR 240	220-240 V	pale grey	115 x 115 x 45
85 WE BIV	220/127 V	white	115 x 115 x 45
85 GE BIV	220/127 V	pastel yellow	115 x 115 x 45
85 GR BIV	220/127 V	pale grey	115 x 115 x 45



pale grey



pastel yellow

two note, electromechanical system
 connection: direct to mains
 220-240V AC, 220/127V AC



white



880

Art. No.	Power	Colour	Size mm
880 WE 240	220-240 V	white	150 x 150 x 45
880 GE 240	220-240 V	pastel yellow	150 x 150 x 45
880 BL 240	220-240 V	pale blue	150 x 150 x 45
880 GN 240	220-240 V	pastel green	150 x 150 x 45
880 WE BIV	220/127 V	white	150 x 150 x 45
880 GE BIV	220/127 V	pastel yellow	150 x 150 x 45
880 BL BIV	220/127 V	pale blue	150 x 150 x 45
880 GN BIV	220/127 V	pastel green	150 x 150 x 45



pastel yellow



pastel blue



pastel green

two note, electromechanical system
 connection: direct to mains
 220-240V AC, 220/127V AC



white

Art. No.	Power	Colour	Size mm
950 WE 240	220-240 V	white	125 x 95 x 35
950 BL 240	220-240 V	pastel blue	125 x 95 x 35
950 GR 240	220-240 V	pale grey	125 x 95 x 35
950 WE BIV	220/127 V	white	125 x 95 x 35
950 BL BIV	220/127 V	pastel blue	125 x 95 x 35
950 GR BIV	220/127 V	pale grey	125 x 95 x 35

three note, electronic with one loudspeaker
connection: direct to mains
220-240V AC, 220/127V AC



pastel blue



pale grey

950



pale grey / blue

Art. No.	Power	Colour	Size mm
970 GR/SZ 240	220-240 V	pale grey / black	140 x 77 x 55
970 GR/GE 240	220-240 V	pale grey / yellow	140 x 77 x 55
970 GR/BL 240	220-240 V	pale grey / blue	140 x 77 x 55
970 GR/GN 240	220-240 V	pale grey / green	140 x 77 x 55
970 GR/SZ BIV	220/127 V	pale grey / black	140 x 77 x 55
970 GR/GE BIV	220/127 V	pale grey / yellow	140 x 77 x 55
970 GR/BL BIV	220/127 V	pale grey / blue	140 x 77 x 55
970 GR/GN BIV	220/127 V	pale grey / green	140 x 77 x 55

continous note, electrical and adjustable
with ohne loudspeaker
connection: direct to mains
220-240V AC, 220/127V AC



pale grey (black

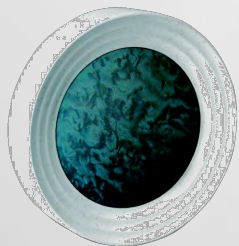


pale grey / yellow



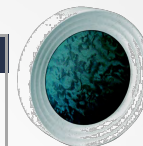
pale grey / green

970



two note, electronic system
connection: direct to mains
220-240V AC, 220/127V AC

Art. No.	Power	Colour	Dia. mm
660 WE/BL 240	220-240 V	white / anthracite	170 x 55
660 WE/BL BIV	220/127 V	white / anthracite	170 x 55



white / anthracite

660



white / silver

Art. No.	Power	Colour	Size mm
103 WE/SI 240	220-240 V	white / metallic silver	166 x 112 x 45
103 WE/BL 240	220-240 V	white / metallic blue	166 x 112 x 45
103 WE/SI BIV	220/127 V	white / metallic silver	166 x 112 x 45
103 WE/BL BIV	220/127 V	white / metallic blue	166 x 112 x 45
103 TR WE/SI	with trafo	white / metallic silver	166 x 112 x 45
103 TR WE/BL	with trafo	white / metallic blue	166 x 112 x 45



white / metallic blue

103

two note, electromechanical system
1.) connection: direct to mains 220-240V AC, 220/127V AC
2.) connection: mains 230 V AC through built-in bell-transformer 8V, 1A



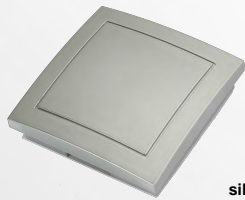
900

Art. No.	Power	Colour	Size mm
900 WE 240	220-240 V	white	215 x 130 x 92
900 WE BIV	220/127 V	white	215 x 130 x 92



white

three note, electronic with 2 loudspeaker
 connection: direct to mains
 220-240V AC, 220/127V AC



2250

Art. No.	Power	Colour	Size mm
2250 WE 240	220-240 V	white	132 x 132 x 43
2250 WE BIV	220/127 V	white	132 x 132 x 43
2250 SI 240	220-240 V	silver	132 x 132 x 43
2250 SI BIV	220/127 V	silver	132 x 132 x 43



white

two note, electrical system
 connection: direct to mains
 220-240V AC, 220/127V AC



106

Art. No.	Power	Colour	Size mm
106 WE/SI 240	220-240 V	white / metallic silver	166 x 112 x 45
106 WE/SI BIV	220/127 V	white / metallic silver	166 x 112 x 45
106 TR WE/SI	with trafo	white / metallic silver	166 x 112 x 45

white /
metallic silver

two note, electromechanical system
 1.) connection: direct to mains 220-240V AC, 220/127V AC
 2.) connection: mains 230 V AC through built-in bell-transformer 8V, 1A



405

Art. No.	Power	Colour	Size mm
405 WE 240	220-240 V	white	235 x 160 x 72
405 WE BIV	220/127 V	white	235 x 160 x 72
405 TR WE	with trafo	white	235 x 160 x 72



white

two note, electromechanical system
 1.) connection: direct to mains 220-240V AC, 220/127V AC
 2.) connection: mains 230 V AC through built-in bell-transformer 8V, 1A



Art. No.	Power	Colour	Size mm
411 AN/ME 240	220-240 V	anthracite / metallic silver	220 x 160 x 47
411 AN/ME BIV	220/127 V	anthracite / metallic silver	220 x 160 x 47
411 TR AN/ME	with trafo	anthracite / metallic silver	220 x 160 x 47
411 SU AN/ME	with buzzer	anthracite / metallic silver	220 x 160 x 47

411



white / metallic silver

two note, electromechanical system

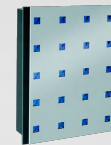
1.) connection: direct to mains 220-240V AC, 220/127V AC

2.) connection: mains 230 V AC through built-in Bell-transformer 8V, 1A



Art. No.	Power	Colour	Size mm
412 AN/BL 240	220-240 V	anthracite / metallic silver blue	220 x 160 x 47
412 AN/BL BIV	220/127 V	anthracite / metallic silver blue	220 x 160 x 47
412 TR AN/BL	with trafo	anthracite / metallic silver blue	220 x 160 x 47
412 SU AN/BL	with buzzer	anthracite / metallic silver blue	220 x 160 x 47

412



anthracite / metallic silver blue

two note, electromechanical system

1.) connection: direct to mains 220-240V AC, 220/127V AC

2.) connection: mains 230 V AC through built-in Bell-transformer 8V, 1A



Art. No.	Power	Colour	Size mm
105 WE/GO 240	220-240 V	white / gold	190 x 145 x 45
105 WE/GO BIV	220/127 V	white / gold	190 x 145 x 45
105 TR WE/GO	with trafo	white / gold	190 x 145 x 45

105



white / gold

two note, electromechanical system

1.) connection: direct to mains 220-240V AC, 220/127V AC

2.) connection: mains 230 V AC through built-in Bell-transformer 8V, 1A

Bell combined with bell transformer



Art. No.	Power	Execution	Size mm
2553 WE 230	220-240 V AC	with bell	137 x 80 x 38
2555 WE 230	220-240 V AC	with buzzer	137 x 80 x 38

2553

2555



white

surface type

220-240 V AC, 70 mm dia. flat gong with connection for additional door bell or door opener.



Art. No.	Power	Colour	Size mm
500 WE 240	220-240 V	white	150 x 150 x 45
500 GE 240	220-240 V	pastel yellow	150 x 150 x 45
500 BL 240	220-240 V	pale blue	150 x 150 x 45
500 WE BIV	220/127 V	white	150 x 150 x 45
500 GE BIV	220/127 V	pastel yellow	150 x 150 x 45
500 BL BIV	220/127 V	pale blue	150 x 150 x 45

500



pastel yellow



pastel blue

two note, electromechanical system

connection: direct to mains 220-240V AC, 220/127V AC



grey / blue

two note, electromechanical system
connection: direct to mains
220-240V AC, 220/127V AC

Art. No.	Power	Colour	Size mm
707 GR/BL 240	220-240 V	grey / blue	210 x 210 x 55
707 GR/GN 240	220-240 V	grey / green	210 x 210 x 55
707 GR/GE 240	220-240 V	grey / yellow	210 x 210 x 55
707 GR/BL BIV	220/127 V	grey / blue	210 x 210 x 55
707 GR/GN BIV	220/127 V	grey / green	210 x 210 x 55
707 GR/GE BIV	220/127 V	grey / yellow	210 x 210 x 55



grey / green



grey / yellow

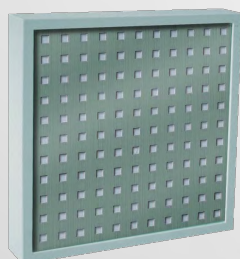


two note, electromechanical system
connection: direct to mains
220-240V AC, 220/127V AC

Art. No.	Power	Colour	Size mm
708 GR 240	220-240 V	grey / silver	210 x 210 x 55
708 GR BIV	220/127 V	grey / silver	210 x 210 x 55



grey / silver



two note, electromechanical system
connection: direct to mains
220-240V AC, 220/127V AC

Art. No.	Power	Colour	Size mm
709 GR 240	220-240 V	grey / chrome	210 x 210 x 55
709 GR BIV	220/127 V	grey / chrome	210 x 210 x 55



grey / chrome

School Bells



Art. No.	Power	Colour	Diameter
56-GR	12 V AC	grey	154 mm
56-GR	220-240 V AC	grey	154 mm
66-RT	12 V DC	red	154 mm
66-RT	240V DC	red	154 mm
59-GR	24 V AC	grey	230 mm
59-GR	220-240 V AC	grey	230 mm



grey



red

56



Call Boards - Wall Mounted



Art. No.	Power	Call Number
No. 50.4/1R	12 V	4
No. 50.6/1R	12 V	6
No. 50.8/1R	12 V	8
No. 50.10/1R	12 V	10
No. 50.12/1R	12 V	12
No. 50.16/1R	12 V	16
No. 50.20/1R	12 V	20
No. 50.24/1R	12 V	24

Art. No.	Power	Call Number
No. 50.4/3R	230 V	4
No. 50.6/3R	230 V	6
No. 50.8/3R	230 V	8
No. 50.10/3R	230 V	10
No. 50.12/3R	230 V	12
No. 50.16/3R	230 V	16
No. 50.20/3R	230 V	20
No. 50.24/3R	230 V	24



silver

The falling tags call boards are used when the minimum consumption is required.

The call boards comes with a mechanical switch-off, horizontal surface, aluminium external application and buzzer, also available with 24 V.

Call Boards - Recessed



Art. No.	Power	Call Number
No. 1304/1R	12 V	4
No. 1306/1R	12 V	6
No. 1308/1R	12 V	8
No. 1310/1R	12 V	10
No. 1312/1R	12 V	12
No. 1316/1R	12 V	16
No. 1320/1R	12 V	20
No. 1324/1R	12 V	24

Art. No.	Power	Call Number
No. 1304/3R	230 V	4
No. 1306/3R	230 V	6
No. 1308/3R	230 V	8
No. 1310/3R	230 V	10
No. 1312/3R	230 V	12
No. 1316/3R	230 V	16
No. 1320/3R	230 V	20
No. 1324/3R	230 V	24



silver

Transformers



Wall mount transformer with ABS anti-shock cover

Art. No.	Power	Voltage
1025	25 VA	4 - 8 - 12

Transformer for both DIN bar or wall mount, cover in self-extinguishing polycarbonate

Art. No.	Power	Voltage
1130	30 VA	12 - 24



10 K



14 / D11



17 / D11



Electric Door Openers

classic modell - surface mounted

- suitable for all common striking plates
- due to 180° fitting, can be used DIN right and left
- symmetrical design

Art. No.	Power	Size
10 K / 6-12	6 - 12 V	132 x 65 x 24 mm
10 K / 24	24 V	(coverplate: 132 x 65 mm)
14 / D11	6 - 12 V	90 x 20 x 28,2 mm
17 / D11	6 - 12 V	75 x 20,5 x 28 mm



Immersion Heaters



Immersion Heaters

- nickel plated brass tube
- red plastic handle with red clip
- white cable protection socket
- available in 220-250V or in 110-130V
- 100 or 200cm cable length available (except Art. No. 100 comes with 80 or 200cm length)
- deliverable with 2- or 3- core wire, without plug, several plugs available on request



3 core wire only

600 Watt 1000 Watt 1000 Watt 1000 Watt 1500 Watt 2000 Watt 3000 Watt

Art. No.	Watt
106	600

Art. No.	Watt
100	1000

Art. No.	Watt
1080	1000

Art. No.	Watt
1081	1000

Art. No.	Watt
112	1500

Art. No.	Watt
113	2000

Art. No.	Watt
114	3000



2000 Watt

Art. No.	Watt
320	2000



3 core wire only

2000 Watt

Art. No.	Watt
195	2000



350 Watt

Art. No.	Watt	Packing
158	350	Box
158p	350	Polybag



350 Watt

Art. No.	Watt	Packing
155	350	Alu-Cup + Zipper
165	350	Plastic-Cup + Zipper
175	350	Glass-Cup + Zipper



PN-X

10 (8) A 250 V - IP 68
with rubber cable (H07RN-F 3G1,0 sqmm)



PN-X

Float switches for filling and emptying.



full + empty

Art. No.	Cable length	Packing
PN-X-1,5	1,5 mtr	100 pcs
PN-X-3,0	3,0 mtr	80 pcs
PN-X-5,0	5,0 mtr	60 pcs

PSN-X / F / O

10 (8) A 250 V - IP 68
with rubber cable (H07RN-F 3G1,0 sqmm)



PSN-X

Float switches for filling and emptying.

PSN-F

Float switches for filling. On reaching the lower switching threshold, the switching mechanism activates the pump. On reaching the upper switching threshold the pump is switched off.

PSN-O

Float switches for emptying. On reaching the upper switching threshold the switching mechanism activates the pump. On reaching the lower switching threshold the pump is switched off. This float switch can also be used as run dry protection

full + empty

full

empty

Art. No.	Cable length	Packing
PSN-X-1,5	1,5 mtr	100 pcs
PSN-X-3,0	3,0 mtr	80 pcs
PSN-X-5,0	5,0 mtr	60 pcs
PSN-X-10,0	10,0 mtr	40 pcs

Art. No.	Cable length	Packing
PSN-F-1,5	1,5 mtr	100 pcs
PSN-F-3,0	3,0 mtr	80 pcs
PSN-F-5,0	5,0 mtr	60 pcs
PSN-F-10,0	10,0 mtr	40 pcs

Art. No.	Cable length	Packing
PSN-O-1,5	1,5 mtr	100 pcs
PSN-O-3,0	3,0 mtr	80 pcs
PSN-O-5,0	5,0 mtr	60 pcs
PSN-O-10,0	10,0 mtr	40 pcs

Accessories



IG - PS



BS - PS

Weight for float switch, for free setting of the switching differences

Art. No.	Weight
IG - PS	180 g
BS - PS	400 g

Plastic Plugs, Couplings and Adaptors



Schuko Plug

Plug



Art. No.	Volt / Amp	Colour
614S	250 V / 16 A	Black
614W	250 V / 16 A	White

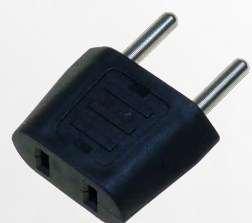


Schuko Coupling

Coupling



Art. No.	Volt / Amp	Colour
544S	250 V / 16 A	Black
544W	250 V / 16 A	White



Adapter Plug

from American flat pins to Schuko



Art. No.	Volt / Amp	Colour
686 sw	250 V / 10 A	Black
686 ws	250 V / 10 A	White



Adapter Plug

from Schuko to American flat pins



Art. No.	Volt / Amp	Colour
695 sw	250 V / 10 A	Black
695 ws	250 V / 10 A	White



Mains Line Plug -Australian Version-

with strain relief sleeve

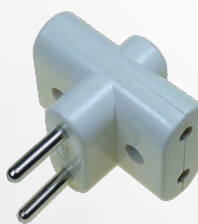


Art. No.	Volt / Amp	Colour
524 sw	250 V / 10 A	Black
524 ws	250 V / 10 A	White



Three Way Plugs

6 A, with solid slotted pins



Art. No.	Volt / Amp	Colour
671 sw	250 V / 6 A	Black
671 ws	250 V / 6 A	White



Adapter Plug

from British Standard to Schuko

Art. No.	Volt / Amp	Colour
146 sw	250 V / 13 A	Black
146 ws	250 V / 13 A	White



from Schuko to British Standard

Art. No.	Volt / Amp	Colour
148 sw	250 V / 13 A	Black
148 ws	250 V / 13 A	White



Iron Plug

- rewireable with earthing contact
and strain relief sleeve
- without switch

Art. No.	Volt / Amp	Colour
685 sw	250 V / 10 A	Black
685 ws	250 V / 10 A	White

KISTENMACHER Rubber Plugs and Couplings - Schuko



10-16 A / 250 Volt



Long
Version

Plug

Art. No.	Colour	Packing / Carton
31501	Black	20 pieces



Coupling

Art. No.	Colour	Packing / Carton
31701	Black	15 pieces

10-16 A / 250 Volt



Short
Version

Plug

Art. No.	Colour	Packing / Carton
31511	Black	25 pieces



Coupling

Art. No.	Colour	Packing / Carton
31791	Black	20 pieces

KISTENMACHER Rubber Plugs and Couplings - Schuko



16 A / 250 Volt



Plug

Art. No.	Colour	Packing / Carton
12091	Black	40 pieces



Coupling

Art. No.	Colour	Packing / Carton
12151	Black	20 pieces

Rubber Plugs and Couplings - Schuko

PCE

16 A / 250 Volt
IP 44 - splashproof



Plug

Art. No.	Colour	Packing / Carton
0511-S	Black	30 pieces

IP 20



Coupling

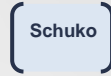
Art. No.	Colour	Packing / Carton
2510-S	Black	20 pieces



455009 - single type

Industrial Socket Outlet

- casing and cover grey
- for 2 cable entries



Art. No.	Volt / A	IP	Pieces / Carton
455009	250 V / 10/16 A	IP 44	10 pieces
455409	250 V / 10/16 A	IP 44	5 pieces



455409 - double type



451609 - single type

Industrial ON-/OFF-Switch

- casing and rockers grey
- for 2 cable entries

Art. No.	Volt / A	IP	Pieces / Carton
451609	250 V / 10 A	IP 44	10 pieces
451509	250 V / 10 A	IP 44	10 pieces



451509 - 2-gang type

KISTENMACHER switches and sockets will work reliably in tough outdoor conditions.

Protection: IP 55
 Amperage: 13A / 16A
 Voltage: 250V



EGK 1GB 16A



EGK SS 13A



EGK SR 13A

Art.-No.	Description					pcs. / carton
EGK 1GS 13A	switch	1-gang	1-way	Schuko / BS	30 pcs.	
EGK 2GS 13A	switch	2-gang	1-way	Schuko / BS	30 pcs.	
EGK 3GS 13A	switch	3-gang	1-way	Schuko / BS	24 pcs.	
EGK 4GS 13A	switch	4-gang	1-way	Schuko / BS	24 pcs.	
EGK 1GBS 13A	switch	1-gang	2-way	Schuko / BS	30 pcs.	
EGK 2GBS 13A	switch	2-gang	2-way	Schuko / BS	30 pcs.	
EGK 3GBS 13A	switch	3-gang	2-way	Schuko / BS	24 pcs.	
EGK 4GBS 13A	switch	4-gang	2-way	Schuko / BS	24 pcs.	
EGK SSR 16A	boiler switch			BS	24 pcs.	
EGK 1GB 16A	bell switch	1-gang		Schuko / BS	30 pcs.	
EGK SS 13A	switch/socket	1-gang	1-way	BS	24 pcs.	
EGK BSS 13A	switch/socket	1-gang	2-way	BS	24 pcs.	
EGK SR 13A	socket	single		Schuko	30 pcs.	
EGK S 13A	socket	single		BS	30 pcs.	
EGK SR/2	socket	double		Schuko	24 pcs.	
EGK S/2	socket	double		BS	24 pcs.	

KISTENMACHER heavy-duty isolating switches have proven to be a reliable choice over many years. The recent product modernization includes sturdy PVC bolts for easier installation.



Art.-No.	Poles	Amperage	pcs. / carton	ctns. / pallet
EGK 1p.-20A	1-pole	20A	24 pcs.	16 cartons
EGK 1p.-35A	1-pole	35A	24 pcs.	16 cartons
EGK 1p.-63A	1-pole	63A	24 pcs.	16 cartons
EGK 2p.-20A	2-pole	20A	24 pcs.	16 cartons
EGK 2p.-35A	2-pole	35A	24 pcs.	16 cartons
EGK 2p.-63A	2-pole	63A	24 pcs.	16 cartons
EGK 3p.-20A	3-pole	20A	24 pcs.	16 cartons
EGK 3p.-35A	3-pole	35A	24 pcs.	16 cartons
EGK 3p.-63A	3-pole	63A	24 pcs.	16 cartons
EGK 4p.-20A	4-pole	20A	24 pcs.	16 cartons
EGK 4p.-35A	4-pole	35A	24 pcs.	16 cartons
EGK 4p.-63A	4-pole	63A	24 pcs.	16 cartons

Voltage: max. 440V
Protection: IP 66
Measurements: 80 x 80 x 160 mm
Cable entries: 4 (2 ea. at top / bottom)





MDR 1 / 6



MDR 1 / 11

MDR 1 / 6

Pump version,
incl. cable glands PG 11 Z/ZK

Switching Capacity	Max. Cut-Out Pressure	Poles	Flange Type	Phase
4.0 kW	6 bar	2-pole (N.C)	Steel	Single

MDR 1 / 11

Compressor version,
incl. cable glands PG 11 Z/ZK and delayed unloader valve AEV

Switching Capacity	Max. Cut-Out Pressure	Poles	Flange Type	Phase
4.0 kW	11 bar	2-pole (N.C)	Aluminium	Single

MDR 11 / 6
MDR 11 / 11**MDR 11 / 6**

Pump version,
incl. cable glands PG 13.5 Z/ZK

Switching Capacity	Max. Cut-Out Pressure	Poles	Flange Type	Phase
4.0 kW	6 bar	2-pole (N.C)	Steel	Single

MDR 11 / 11

Compressor version,
incl. cable glands PG 13.5 Z/ZK
with delayed unloader valve AEV 11 S

Switching Capacity	Max. Cut-Out Pressure	Poles	Flange Type	Phase
4.0 kW	11 bar	2-pole (N.C)	Aluminium	Single



MDR 2

**MDR 2**

with screw terminals

Switching Capacity	Max. Cut-Out Pressure	Poles	Flange Type	Phase
2.2 kW	12 bar	2-pole (N.C)	Aluminium	Single



MDR 21

**MDR 21**

Switching Capacity	Max. Cut-Out Pressure	Poles	Flange Type	Phase
2.2 kW	12 bar	2-pole (N.C)	Aluminium	Single



MDR 3

**MDR 3**

available with overload relay, undervoltage protection and hourmeter

Switching Capacity	Max. Cut-Out Pressure	Poles	Flange Type	Phase
7.5 (11) kW	35 bar	3-pole (N.C)	Aluminium	3-Phase



MDR 4 S



MDR 43

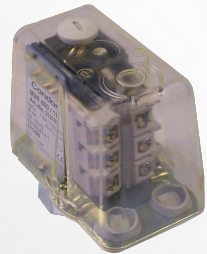
MDR 4 S

Switching Capacity	Max. Cut-Out Pressure	Poles	Flange Type	Phase
5.5 kW	25 bar	3-pole (N.C)	Aluminium	3-Phase

MDR 43

transparent cover

Switching Capacity	Max. Cut-Out Pressure	Poles	Flange Type	Phase
-	16 bar	1 N.C + 1 N.O	Aluminium	Single



MDR 4 SD



MDR 4 SU

MDR 4 SD

with scale and transparent cover

Switching Capacity	Max. Cut-Out Pressure	Poles	Flange Type	Phase
5.5 kW	11 bar	3-pole (N.C)	Aluminium	3-Phase

MDR 4 SU

with reversed function

Switching Capacity	Max. Cut-Out Pressure	Poles	Flange Type	Phase
4.0 kW	16 bar	3-pole (N.C)	Aluminium	3-Phase



MDR 5



MDR 5 IP65

MDR 5

available with overload relay

Switching Capacity	Max. Cut-Out Pressure	Poles	Flange Type	Phase
5.5 kW	45 bar	3-pole (N.C)	-	Single

MDR 5 IP65

Pump version, special execution IP 65

Applications: e.g. pump shafts
incl. cable glands

Switching Capacity	Max. Cut-Out Pressure	Poles	Flange Type	Phase
5.5 kW	16 bar	3-pole (N.C)	Aluminium	3-Phase



MDR 53



MDR F

MDR 53

ample wiring room, 1 SPDT, 1 change over

Switching Capacity	Max. Cut-Out Pressure	Poles	Flange Type	Phase
	16 bar	2-pole (N.C)	Aluminium	Single

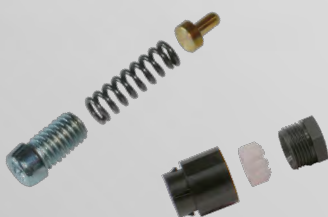
MDR F - High Performance Pressure Switch

ample wiring room, 1 SPDT, models Industrial clamp version or industrial screw version with Perbunan diaphragm and die-cast aluminum flange for oil, water e.g.

Switching Capacity	Max. Cut-Out Pressure	Poles	Flange Type	Phase
	250 bar	1 SPDT *	Aluminium	Single

* DPDT also available

various additional accesories available upon your request



additional approvals upon your request



Junction Boxes





Junction Box i 12-L

complete with perforation tool and blanking plug,
with external fixing positions acc. DIN EN 60670 (VDE 0606),
12 entries, 3 floor entries, IP 55, grey, without terminals,
for VDE approved single terminals

Art. No.	Size	Cross Section	Insulation Voltage AC	Blanking Plug
332 912 01	85 x 85 x 37 mm	2,5 mm ²	400 V	M 16



Junction Box - WK Range

Duroplastic, halogen-free, with IP54 attachment bushes, grey, without terminals,
acc. DIN EN 60670 (VDE 0606)

Art. No. / WK	Size	Cross section	Insulation voltage AC	Blanking Plug	Seal Range	With sealing kit
402 907 01 /	80 x 80 x 38 mm	2,5 mm ²	400 V	M 16	6 - 10 mm	No
404 907 01 /	87 x 87 x 45 mm	4 mm ²	690 V	M 20	8 - 13,5 mm	No
406 906 01 /	100 x 100 x 50 mm	6 mm ²	690 V	M 25	9 - 18,5 mm	No
410 906 01 /	115 x 115 x 66 mm	10 mm ²	690 V	M 32	13 - 23 mm	Yes
416 912 01 /	165 x 165 x 76 mm	16 mm ²	690 V	M 40	17 - 30 mm	Yes
425 916 01 /	256 x 171 x 106 mm	25 mm ²	690 V	M 40	17 - 30 mm	Yes

Distribution Boxes





Distribution Box - AKi Range

Industrial quality, halogen-free, IP 65, PE/N terminal, masking and labelling strips,
insulating seals, additional double-membrane seals

Art. No. / Aki	Size	Insulation Voltage AC	Modules	Pole	Elastic entries on top
736 403 01 / Aki 03	100 x 150 x 96 mm	400 V	3	2 x 4 pole 6/16mm ²	3
736 405 01 / Aki 05	125 x 200 x 122 mm	400 V	5	2 x 5 pole 6/16mm ²	4
736 409 01 / Aki 09	200 x 200 x 122 mm	400 V	9	2 x 7 pole 6/16mm ²	6
736 412 01 / Aki 12	250 x 200 x 122 mm	400 V	12	2 x 12 pole 6/16mm ²	8
736 424 01 / Aki 24	250 x 370 x 122 mm	400 V	24	2 x 16 pole 6/16mm ²	8



Cable Junction Boxes



Cable Junction Boxes with pre-moulded knock-outs (for to use cable glands)



Art. No.	Dimensions	Lid closing method	IP	No. Of entries	Cable glands	Cables dia. Min./max.	Packing
220-A	80x80x50 mm	Press-On	54	7	PG16	11-14	10 pieces
222-A	100x100x55 mm	Twist-Lock Screws	65	6	PG16	11-14	6 pieces
221-A	150x110x70 mm	Twist-Lock Screws	65	10	PG16	11-14	3 pieces
223-A	175x110x66 mm	Twist-Lock Screws	65	10	PG16	11-14	3 pieces
223-ATA	175x110x83 mm	Twist-Lock Screws	65	10	PG16	11-14	3 pieces
225-A	190x150x70 mm	Twist-Lock Screws	65	10	2 PG29+8PG21	14-25	3 pieces
225-ATA	190x150x83 mm	Twist-Lock Screws	65	10	2 PG29+8PG21	14-25	3 pieces
224-A	220x170x120 mm	Twist-Lock Screws	65	10	2 PG29+8PG21	14-25	2 pieces



Cable Junction Boxes with stepped rubber grommets

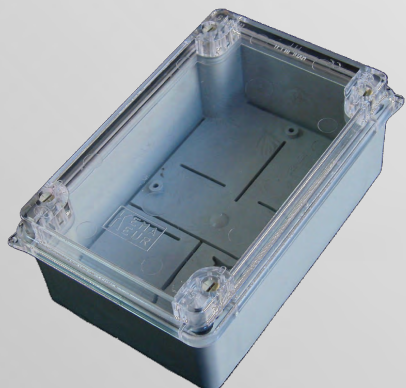
Art. No.	Dimensions	Lid closing method	IP	No. Of entries	Cable glands	Cables dia. Min./max.	Packing
219-B	80x45 mm	Press-On	54	4	PG21	3,5-23,5	8 pieces
220-B	80x80x50 mm	Press-On	54	7	PG16	3,5-20	10 pieces
222-B	100x100x55 mm	Twist-Lock Screws	65	6	PG21	3,5-23,5	6 pieces
221-B	150x110x70 mm	Twist-Lock Screws	65	10	PG21	3,5-23,5	3 pieces
223-B	175x110x66 mm	Twist-Lock Screws	65	10	PG21	3,5-23,5	3 pieces
223-BTA	175x110x83 mm	Twist-Lock Screws	65	10	PG21	3,5-23,5	3 pieces
225-B	190x150x70 mm	Twist-Lock Screws	65	10	2 PG29+8PG21	3,5-32	3 pieces
225-BTA	190x150x83 mm	Twist-Lock Screws	65	10	2 PG29+8PG21	3,5-32	3 pieces
224-B	220x170x120 mm	Twist-Lock Screws	65	10	2 PG29+8PG21	3,5-32	2 pieces

Cable Junction Boxes with plain walls



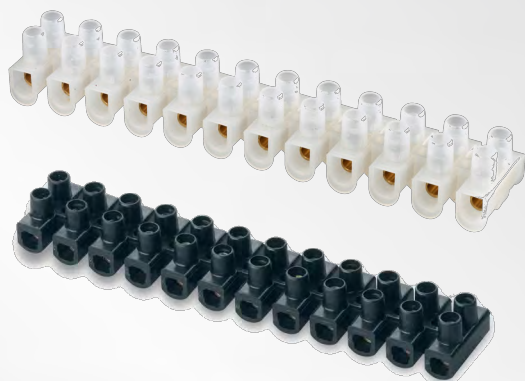
Art. No.	Dimensions	Lid closing method	IP	No. Of entries	Cable glands	Cables dia. Min./max.	Packing
220-L	80x80x50 mm	Press-On	54	X	X	X	10 pieces
222-L	100x100x55 mm	Twist-Lock Screws	65	X	X	X	6 pieces
221-L	150x110x70 mm	Twist-Lock Screws	65	X	X	X	3 pieces
223-L	175x110x66 mm	Twist-Lock Screws	65	X	X	X	3 pieces
223-LTA	175x110x83 mm	Twist-Lock Screws	65	X	X	X	3 pieces
225-L	190x150x70 mm	Twist-Lock Screws	65	X	X	X	3 pieces
225-LTA	190x150x83 mm	Twist-Lock Screws	65	X	X	X	3 pieces
224-L	220x170x120 mm	Twist-Lock Screws	65	X	X	X	2 pieces

Cable Junction Boxes with transparent covers



Art. No.	Dimensions	Lid closing method	IP	No. Of entries	Cable glands	Cables dia. Min./max.	Packing
221-ATR	150x110x70 mm	Twist-Lock Screws	65	10	PG16	11-14	3 pieces
221-BTR	150x110x70 mm	Twist-Lock Screws	54	10	PG21	3,5-23,5	3 pieces
221-LTR	150x110x70 mm	Twist-Lock Screws	65	X	X	X	3 pieces
223-ATR	175x110x66 mm	Twist-Lock Screws	65	10	PG21	11-14	3 pieces
223-BTR	175x110x66 mm	Twist-Lock Screws	54	10	PG21	3,5-23,5	3 pieces
223-LTR	175x110x66 mm	Twist-Lock Screws	65	X	X	X	3 pieces
223-ATAR	175x110x83 mm	Twist-Lock Screws	65	10	PG16	11-14	3 pieces
223-BTATR	175x110x83 mm	Twist-Lock Screws	54	10	PG21	3,5-23,5	3 pieces
223-LTATR	175x110x83 mm	Twist-Lock Screws	65	X	X	X	3 pieces
225-ATR	190x150x70 mm	Twist-Lock Screws	65	10	2 PG29+8PG21	14-45	3 pieces
225-BTR	190x150x70 mm	Twist-Lock Screws	54	10	2 PG29+8PG21	3,5-32	3 pieces
225-LTR	190x150x70 mm	Twist-Lock Screws	65	10	X	X	3 pieces
225-ATATR	190x150x83 mm	Twist-Lock Screws	65	10	2 PG29+8PG21	14-25	3 pieces
225-BTATR	190x150x83 mm	Twist-Lock Screws	54	10	2 PG29+8PG21	3,5-32	3 pieces
225-LTATR	190x150x83 mm	Twist-Lock Screws	65	X	X	X	3 pieces
224-ATR	220x170x120 mm	Twist-Lock Screws	65	10	2 PG29+8PG21	14-25	2 pieces
224-BTR	220x170x120 mm	Twist-Lock Screws	65	10	2 PG29+8PG21	3,5-32	2 pieces

KISTENMACHER PVC Connectors



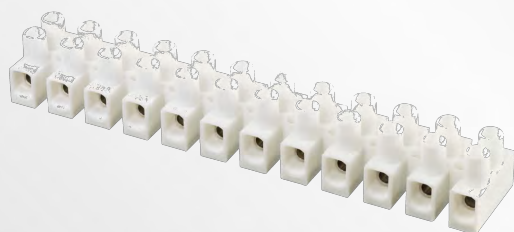
Poles: 12 brass terminals, flexible
Material: Polyethylen (PE), self-extinguishing,
Terminal: Temperature-stable up to 85°C
Bolts: Brass
Screws: Steel galvanized, blue chromatised
Colours: Natural, White, Black

acc. to DIN EN 60998 / VDE 0613



Art. No.	Size	Amp	Pieces / carton
7-1025N	2,5 mm ²	2,5 A	300 pieces
7-106N	4-6 mm ²	5 A	200 pieces
7-110N	10 mm ²	15 A	200 pieces
7-116N	16 mm ²	30 A	120 pieces
7-125N	25 mm ²	50 A	100 pieces

Euro Connectors for High Temperature

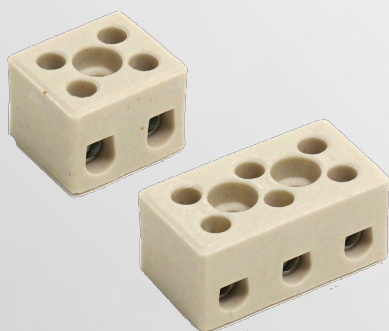


Poles: 12 brass terminals, flexible
Material: Polyamide (PA), self-extinguishing,
Terminal: Temperature-stable up to 100°C
Bolts: Brass, nickel plated
Screws: Steel galvanized, yellow chromatised
Colours: Natural, White, Black

acc. to DIN EN 60998 / VDE 0613

Art. No.	Size	Amp	Pieces / carton
16028	1,5 mm ²	2,5 A	10 pieces
16228	2,5 mm ²	5 A	10 pieces
16328	4 mm ²	15 A	10 pieces
16428	10 mm ²	30 A	10 pieces
16528	16 mm ²	50 A	10 pieces

Ceramic Connectors with fixing hole



Poles: 1 - 4
Material: Porcelain C 111, ICE 672-1, glazed
Terminal: Temperature-stable up to max. 200°C
Bolts: Brass, nickel plated (galvanised)
Screws: Zinc-plated steel (galvanised)
Colour: White

Art. No.	Poles	Size	Pieces / carton
1-111-1	1	1,5 - 6 mm ²	100 pieces
1-211-1	1	2,5 - 16 mm ²	100 pieces
2-402-2	2	1,5 - 6 mm ²	100 pieces
2-403-3	3	1,5 - 6 mm ²	50 pieces
2-424-4	4	1,5 - 6 mm ²	50 pieces
2-1602-2	2	2,5 - 10 mm ²	50 pieces
2-1603-3	3	2,5 - 10 mm ²	50 pieces
2-2021-2	2	2,5 - 16 mm ²	50 pieces
2-2031-3	3	2,5 - 16 mm ²	50 pieces

Bakelite Connectors



Poles: 12
Material: Bakelite type PF31
Terminal: Temperature-stable up to max. 140°C
Bolts: Brass, nickel plated (galvanised)
Screws: Zinc-plated steel (galvanised)
Colour: Black

Art. No.	Size	Pieces / carton
3-722-8-12	1,5 - 6 mm ²	20 pieces
3-822-8-12	10 mm ²	20 pieces
3-922-8-12	16 mm ²	20 pieces



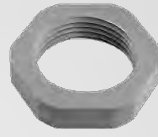
CONUS Cable Gland

Material: Polystyrene, impact-proof, halogen-free, grey, IP 54, PG connection thread

also available with adjustable rubber ring (IP65) (Art.No. +...AS)



Art. No.	Size	Packing Unit
250/07	3,5 - 6	50
250/09	4,5 - 7	50
250/11	6 - 9	50
250/13	9 - 12	50
250/16	11 - 14	50
250/21	14 - 18	50
250/29	18 - 25	10
250/36	25 - 32	10
250/42	30 - 38	5
250/48	34 - 42	5



Locknut

Material: Polystyrene, impact-proof, halogen-free, grey, PG connection

Art. No.	Packing Unit
3420/07	100
3420/09	100
3420/11	100
3420/13	100
3420/16	100
3420/21	100
3420/29	50
3420/36	25
3420/42	25
3420/48	25



Screw Plug

Material: Polystyrene, impact-proof, halogen-free, grey, IP 54, PG connection thread

Art. No.	Packing Unit
514/07	100
514/09	100
514/11	100
514/13	100
514/16	100
514/21	100
514/29	50
514/36	25
514/42	25
54148	25



Cable Gland

Material: brass, nickel plated IP 54, PG connection thread

also available with adjustable rubber ring (IP65) (Art.No. +...A)



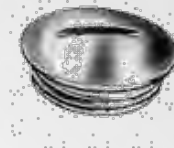
Art. No.	Size	Packing Unit
530/07	5 - 7	100
530/09	6 - 8	100
530/11	8 - 10	50
530/13	11 - 13	50
530/16	13 - 15	50
530/21	17 - 19	25
530/29	24 - 26	10
530/36	31 - 33	10
530/42	37 - 39	10
530/48	41 - 43	5



Locknut

Material: brass, nickel plated, PG connection thread

Art. No.	Packing Unit
420/07	100
420/09	100
420/11	100
420/13	100
420/16	100
420/21	100
420/29	100
420/36	50
420/42	25
420/48	25



Screw Plug

Material: brass, nickel plated, PG connection thread

Art. No.	Packing Unit
1514/07	100
1514/09	100
1514/11	100
1514/13	100
1514/16	100
1514/21	100
1514/29	50
1514/36	25
1514/42	25
1514/48	25



IPON Cable Glands light grey

with integrated strain relief, Material: Polyamide, halogen-free, IP68, 5 Bar, light grey Flame-retardance: UL94V-0 Glow wire test: 850°C

PG or metric ISO thread available

Art. No.	Size	Packing Unit
1234P0701	3 - 6,5	50
1234P0901	4 - 8	50
1234P1101	5 - 10	50
1234P1301	6 - 12	50
1234P1601	9 - 14	50
1234P2101	12 - 18	25
1234P2901	17 - 25	10
1234P3601	20 - 32	10
1234P4201	32 - 38	5
1234P4801	37 - 44	5



Locknut

Material: Polyamide, glass-fibre reinforced, with fire protection, halogen-free

PG or metric ISO thread available

Art. No.	Packing Unit
1420/07	100
1420/09	100
1420/11	100
1420/13	100
1420/16	100
1420/21	100
1420/29	100
1420/36	50
1420/42	25
1420/48	25



Screw Plug

Material: Polystyrene, impact-proof, halogen-free, IP54

PG or metric ISO thread available

Art. No.	Packing Unit
514/07	100
514/09	100
541/11	100
541/13	100
514/16	100
514/21	100
514/29	50
514/36	25
514/42	25
514/48	25

KISTENMACHER Plastic Draw-In Bands

Material: Solid Nylon

available in black or white

with revitted eye and ball

Thickness (diameter): 3 mm

Thickness (diameter): 4 mm



Art. No.	Length	Pieces / Carton
PE 305	5 mtr.	400 pcs
PE 310	10 mtr.	200 pcs.
PE 315	15 mtr.	100 pcs.
PE 320	20 mtr.	100 pcs.
PE 325	25 mtr.	60 pcs.
PE 330	30 mtr.	50 pcs.

Art. No.	Length	Pieces / Carton
PE 405	5 mtr.	400 pcs
PE 410	10 mtr.	200 pcs.
PE 415	15 mtr.	100 pcs.
PE 420	20 mtr.	100 pcs.
PE 425	25 mtr.	60 pcs.
PE 430	30 mtr.	50 pcs.

KISTENMACHER Steel Draw-In Bands

Material: Extra hardened steel

Thickness (diameter): 5 mm

Width: 3,5 mm

with revitted eye on both sides

with revitted eye and ball



Art. No.	Length	Pieces / Carton
ST 05	5 mtr.	10 pcs
ST 10	10 mtr.	10 pcs
ST 15	15 mtr.	10 pcs
ST 20	20 mtr.	10 pcs
ST 25	25 mtr.	10 pcs
ST 30	30 mtr.	10 pcs
ST 50	50 mtr.	10 pcs.

Art. No.	Length	Pieces / Carton
STB 05	5 mtr.	10 pcs
STB 10	10 mtr.	10 pcs.
STB 15	15 mtr.	10 pcs.
STB 20	10 mtr.	10 pcs.
STB 25	25 mtr.	10 pcs.
STB 30	30 mtr.	10 pcs.
STB 50	50 mtr.	10 pcs.

Thickness (diameter): 5 mm

Width: 5 mm

with revitted eye on both sides

Art. No.	Length	Pieces / Carton
SB 05	5 mtr.	10 pcs
SB 10	10 mtr.	10 pcs
SB 15	15 mtr.	10 pcs
SB 20	20 mtr.	10 pcs
SB 25	25 mtr.	10 pcs
SB 30	30 mtr.	10 pcs
SB 40	40 mtr.	10 pcs.



KISTENMACHER pipe bending springs are available in a variety of types and will bend electrical conduits with ease.

Standard Pipe Bending Springs:

one end with plain ending, other end with round hook
 plain steel finishing
 protected by an anti-rust grease film

Art.-No.	Diameter	Length	Pieces/ bag / carton
EGK PBS16	16 mm	560 mm	20 pieces
EGK PBS20	20 mm	560 mm	20 pieces
EGK PBS25	25 mm	560 mm	20 pieces
EGK PBS32	32 mm	560 mm	20 pieces
EGK PBS38	38 mm	560 mm	20 pieces



Heavy Duty Pipe Bending Springs:

one end with plain ending, other end with **double round hook**
 plain steel finishing
 protected by an anti-rust grease film

Art.-No.	Diameter	Length	Pieces/ bag / carton
EGK PBS-E16	16 mm	560 mm	20 pieces
EGK PBS-E20	20 mm	560 mm	20 pieces
EGK PBS-E25	25 mm	560 mm	20 pieces
EGK PBS-E32	32 mm	560 mm	20 pieces
EGK PBS-E38	38 mm	560 mm	20 pieces



Galvanized Pipe Bending Springs:

one end with plain ending, other end with round hook
 galvanized steel finishing

Art.-No.	Diameter	Length	Pieces/ bag / carton
EGK PBS-G16	16 mm	560 mm	20 pieces
EGK PBS-G20	20 mm	560 mm	20 pieces
EGK PBS-G25	25 mm	560 mm	20 pieces
EGK PBS-G32	32 mm	560 mm	20 pieces
EGK PBS-G38	38 mm	560 mm	20 pieces



Cable Ties

All **KISTENMACHER** Cable Ties are one piece moulded mechanism with no metal barbs or cumbersome wedges, molded of the finest virgin Nylon 66, self-extinguishing UL-94 flam.

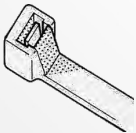
Class: V-2, V-0 available upon request.

Bent tip, finger grip tip, low threading force, no sharp edges ensure easy handling and installation to increase productivity and reduce your installation costs.

Standard colors: natural nylon, Pigmented black optional. Other colors available upon request. Ultraviolet ray resistant black ties for outdoor applications and heat stabilized ties available upon request

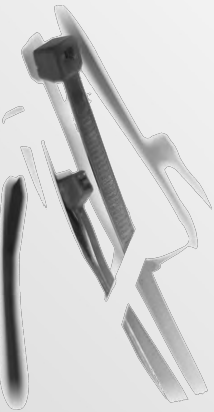


Standard:



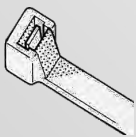
Operating temperature:

- 40°C to + 85° C

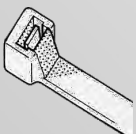


Art.-No.	Length mm	Width mm	Pieces / plastic bag	Pieces / carton
EGK C 080 x 2,5	80 mm	2,5 mm	100 pieces	60.000 pieces
EGK C 100 x 2,5	100 mm	2,5 mm	100 pieces	60.000 pieces
EGK C 120 x 2,5	120 mm	2,5 mm	100 pieces	45.000 pieces
EGK C 150 x 2,5	150 mm	2,5 mm	100 pieces	40.000 pieces
EGK C 200 x 2,5	200 mm	2,5 mm	100 pieces	30.000 pieces
EGK C 150 x 3,5	150 mm	3,5 mm	100 pieces	25.000 pieces
EGK C 180 x 3,5	180 mm	3,5 mm	100 pieces	22.000 pieces
EGK C 200 x 3,5	200 mm	3,5 mm	100 pieces	20.000 pieces
EGK C 250 x 3,5	250 mm	3,5 mm	100 pieces	16.000 pieces
EGK C 300 x 3,5	300 mm	3,5 mm	100 pieces	14.000 pieces
EGK C 370 x 3,5	370 mm	3,5 mm	100 pieces	12.000 pieces
EGK C 200 x 4,8	200 mm	4,8 mm	100 pieces	14.000 pieces
EGK C 250 x 4,8	250 mm	4,8 mm	100 pieces	12.000 pieces
EGK C 300 x 4,8	300 mm	4,8 mm	100 pieces	10.000 pieces
EGK C 350 x 4,8	350 mm	4,8 mm	100 pieces	10.000 pieces
EGK C 370 x 4,8	370 mm	4,8 mm	100 pieces	9.000 pieces
EGK C 400 x 4,8	400 mm	4,8 mm	100 pieces	8.000 pieces
EGK C 450 x 4,8	450 mm	4,8 mm	100 pieces	6.000 pieces
EGK C 500 x 4,8	500 mm	4,8 mm	100 pieces	5.000 pieces
EGK C 200 x 7,6	200 mm	7,6 mm	100 pieces	7.000 pieces
EGK C 250 x 7,6	250 mm	7,6 mm	100 pieces	6.000 pieces
EGK C 300 x 7,6	300 mm	7,6 mm	100 pieces	5.000 pieces
EGK C 350 x 7,6	350 mm	7,6 mm	100 pieces	5.000 pieces
EGK C 400 x 7,6	400 mm	7,6 mm	100 pieces	4.000 pieces
EGK C 450 x 7,6	450 mm	7,6 mm	100 pieces	3.500 pieces
EGK C 500 x 7,6	500 mm	7,6 mm	100 pieces	3.000 pieces
EGK C 550 x 7,6	550 mm	7,6 mm	100 pieces	2.000 pieces
EGK C 700 x 7,6	700 mm	7,6 mm	100 pieces	1.000 pieces
EGK C 400 x 9,0	400 mm	9,0 mm	100 pieces	2.000 pieces
EGK C 450 x 9,0	450 mm	9,0 mm	100 pieces	2.000 pieces
EGK C 500 x 9,0	500 mm	9,0 mm	100 pieces	2.000 pieces
EGK C 550 x 9,0	550 mm	9,0 mm	100 pieces	1.000 pieces
EGK C 600 x 9,0	600 mm	9,0 mm	100 pieces	1.000 pieces
EGK C 650 x 9,0	650 mm	9,0 mm	100 pieces	1.000 pieces
EGK C 700 x 9,0	700 mm	9,0 mm	100 pieces	1.000 pieces
EGK C 750 x 9,0	750 mm	9,0 mm	100 pieces	1.000 pieces
EGK C 800 x 9,0	800 mm	9,0 mm	100 pieces	1.000 pieces
EGK C 900 x 9,0	900 mm	9,0 mm	100 pieces	1.000 pieces
EGK C 1020 x 9,0	1020 mm	9,0 mm	100 pieces	1.000 pieces

Heavy Duty line:

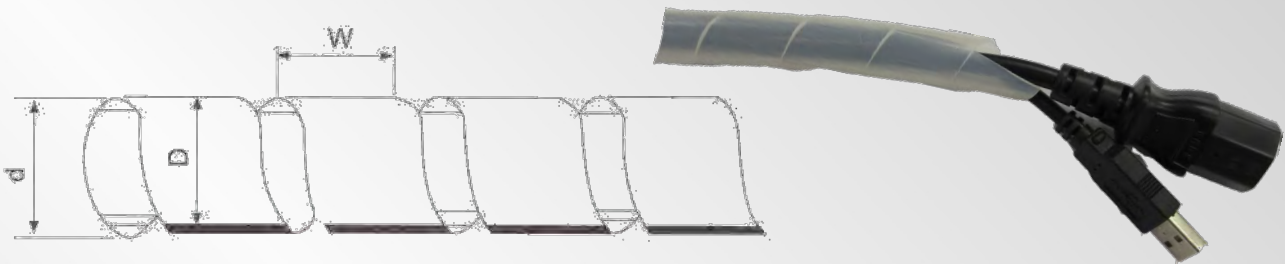


Heavy Duty line:



For the management and protection of cables and hoses, **KISTENMACHER** offers, plastic spiral wrapping.

Thanks to flexible PE material, the spiral wrapping can be installed and removed with ease.



Art.-No.	D (mm)	d (mm)	W (mm)	Wrapping Range (mm)	Meters / Roll	Rolls / Carton
EGK SW 6	4,00	6,00	7,00	4 - 50	10 m	100 rolls
EGK SW 8	6,00	8,00	10,80	6 - 60	10 m	80 rolls
EGK SW 10	7,50	10,00	11,40	7,5 - 60	10 m	50 rolls
EGK SW 12	9,00	12,00	13,90	9 - 65	10 m	40 rolls
EGK SW 15	12,00	15,00	15,00	12 - 75	10 m	25 rolls
EGK SW 19	15,00	19,00	18,20	15 - 100	10 m	9 rolls
EGK SW 24	20,00	24,00	19,60	20 - 130	10 m	8 rolls

Material: Polyethylene (PE)
 Temp. resistance of material: -50 to 75°C
 Colours: natural / black



Cable Markers

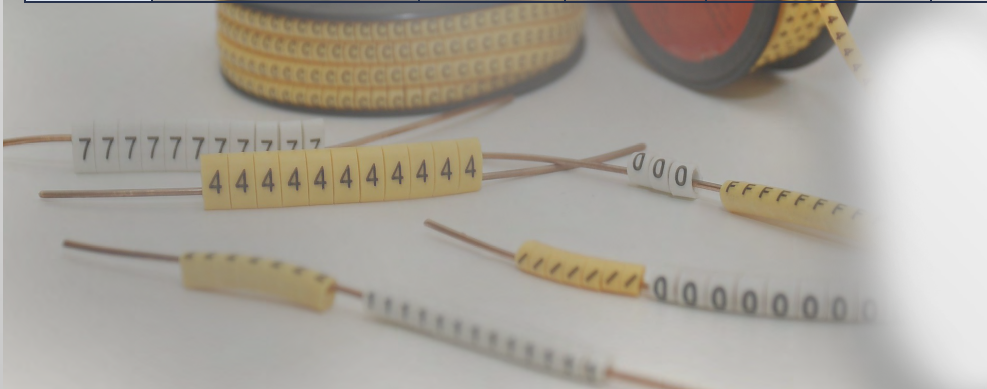
Marker tongue spans to fit various cable diameters and retracts to hold wires firmly in position

Maximum service temperature: +85°C

Material: PVC oil and erosion resistant



Art.-No.	Cable Size (sqmm)	Sqmm	Type-Numbering	Type-Lettering	Type-Symbol	Pieces per Roll	Lenth/Roll
EGK EC 0	0,75 sqmm	0,75 sqmm	0 to 9	A to Z or Blank	+, -, /, #, *, ~, ,	1.000 pieces	4,00 mtr
EGK EC 0	0,75 sqmm—3,0 sqmm	1,0 sqmm	0 to 9	A to Z or Blank	+, -, /, #, *, ~, ,	1.000 pieces	4,00 mtr
EGK EC 0	1,5 sqmm—3,0 sqmm	1,5 sqmm	0 to 9	A to Z or Blank	+, -, /, #, *, ~, ,	1.000 pieces	4,00 mtr
EGK EC 1	2,6 sqmm—4,2 sqmm	2,5 sqmm	0 to 9	A to Z or Blank	+, -, /, #, *, ~, ,	1.000 pieces	4,00 mtr
EGK EC 2	3,6 sqmm—7,4 sqmm	4,0 sqmm	0 to 9	A to Z or Blank	+, -, /, #, *, ~, ,	500 pieces	2,75 mtr
EGK EC 3	5,0 sqmm—10,0 sqmm	6,0 sqmm	0 to 9	A to Z or Blank	+, -, /, #, *, ~, ,	350 pieces	1,95 mtr
EGK EC 3	8,0 sqmm—11,9 sqmm	8,0 sqmm	0 to 9	A to Z or Blank	+, -, /, #, *, ~, ,	250 pieces	1,37 mtr
EGK EC 3	10,0 sqmm	10,0 sqmm	0 to 9	A to Z or Blank	+, -, /, #, *, ~, ,	180 pieces	0,99 mtr
EGK EC 3	12,0 sqmm	12,0 sqmm	0 to 9	A to Z or Blank	+, -, /, #, *, ~, ,	160 pieces	0,88 mtr
EGK EC J	3,6 sqmm-7,2 sqmm	4,0 sqmm	0 to 9	A to Z or Blank	+, -, /, #, *, ~, ,	500 pieces	2,50 mtr



KISTENMACHER thin wall Heat Shrinkable Tubes provide an easy to use and durable solution for the protection of cable and cable connections. EGK heat shrinkable tubes will work reliably in temperatures from – 40°C up to +125°C and provide flame retardancy and UV resistance. The field of application ranges from installation in communication, electronics and aviation to maintenance and cable indexing. Installation of EGK Heat Shrinkable tubes can work with any standard hot air gun with best performance.

Standard colours: Black, White, Red, Yellow, Blue, Green, other colours on request

- Shrink Ratio:** 2 : 1
- Operating temp:** - 40 to + 125°C
- Max. voltage:** 660V
- Characteristics:**
 - Flexible
 - Non-corrosive
 - High tensile strength
 - UV resistant
 - Flame retardant
 - Good electrical features

Bi-Colour available on request

Art.-No.	Thickness	Size	Mtr. per spool	Mtr. per carton
EGK HEAT 1	0,18 mm ± 0,02mm	Ø 1,0 mm	200 mtr.	3000 mtr.
EGK HEAT 1,5	0,18 mm ± 0,02 mm	Ø 1,5 mm	200 mtr.	2600 mtr.
EGK HEAT 2	0,18 mm ± 0,02 mm	Ø 2,0 mm	200 mtr.	2000 mtr.
EGK HEAT 2,5	0,18 mm ± 0,02 mm	Ø 2,5 mm	200 mtr.	3000 mtr.
EGK HEAT 4	0,22 mm ± 0,02 mm	Ø 4,0 mm	200 mtr.	1800 mtr.
EGK HEAT 5	0,24 mm ± 0,02 mm	Ø 5,0 mm	100 mtr.	1200 mtr.
EGK HEAT 6	0,24 mm ± 0,02 mm	Ø 6,0 mm	100 mtr.	1000 mtr.
EGK HEAT 7	0,24 mm ± 0,02 mm	Ø 7,0 mm	100 mtr.	2000 mtr.
EGK HEAT 8	0,24 mm ± 0,02 mm	Ø 8,0 mm	100 mtr.	1900 mtr.
EGK HEAT 9	0,24 mm ± 0,02 mm	Ø 9,0 mm	100 mtr.	1800 mtr.
EGK HEAT 10	0,28 mm ± 0,02 mm	Ø 10,0 mm	100 mtr.	1700 mtr.
EGK HEAT 11	0,28 mm ± 0,02 mm	Ø 11,0 mm	100 mtr.	1600 mtr.
EGK HEAT 12	0,28 mm ± 0,02 mm	Ø 12,0 mm	100 mtr.	1500 mtr.
EGK HEAT 13	0,28 mm ± 0,02 mm	Ø 13,0 mm	100 mtr.	1400 mtr.
EGK HEAT 14	0,30 mm ± 0,03mm	Ø 14,0 mm	100 mtr.	1400 mtr.
EGK HEAT 15	0,30 mm ± 0,03 mm	Ø 15,0 mm	100 mtr.	1300 mtr.
EGK HEAT 16	0,30 mm ± 0,03 mm	Ø 16,0 mm	100 mtr.	1200 mtr.
EGK HEAT 17	0,35 mm ± 0,03 mm	Ø 17,0 mm	100 mtr.	1100 mtr.
EGK HEAT 18	0,35 mm ± 0,03 mm	Ø 18,0 mm	100 mtr.	1100 mtr.
EGK HEAT 19	0,35 mm ± 0,03 mm	Ø 19,0 mm	100 mtr.	1000 mtr.
EGK HEAT 22	0,35 mm ± 0,03 mm	Ø 22,0 mm	100 mtr.	900 mtr.
EGK HEAT 25	0,40 mm ± 0,05 mm	Ø 25,0 mm	25 mtr.	500 mtr.
EGK HEAT 28	0,40 mm ± 0,05 mm	Ø 28,0 mm	25 mtr.	450 mtr.
EGK HEAT 30	0,40 mm ± 0,05 mm	Ø 30,0 mm	25 mtr.	400 mtr.
EGK HEAT 35	0,40 mm ± 0,05 mm	Ø 35,0 mm	25 mtr.	350 mtr.
EGK HEAT 38	0,40 mm ± 0,05 mm	Ø 38,0 mm	25 mtr.	500 mtr.
EGK HEAT 50	0,40 mm ± 0,05 mm	Ø 50,0 mm	25 mtr.	250 mtr.
EGK HEAT 80	0,45 mm ± 0,03 mm	Ø 80,0 mm	25 mtr.	200 mtr.
EGK HEAT 100	0,45 mm ± 0,03 mm	Ø 100,0 mm	25 mtr.	150 mtr.
EGK HEAT 150	0,50 mm ± 0,03 mm	Ø 150,0 mm	25 mtr.	100 mtr.



i-joint

cast resin low voltage straight joints (0,6 kV - 1 kV)

The straight joints are suitable for all electrical installation work on all types of plastic cables and those made of PVC, PE, EPR and VPE (e.g. NYY, NYCWY) in the low voltage system.



Characteristics

- Two-piece, shock-resistant and transparent moulds
- Compact dimensions
- Preset cable diameter on the moulds
- Ready for use immediately
- Waterproof, both lengthwise and crosswise
- Straight joints castable underwater
- Storable for 36 months

Range of application

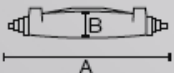
- Indoors
- In the ground
- Outdoors
- In water
- In installation circuits

according to VDE 278

according to DIN EN 50393

Straight joints suitable for all plastic cables (with cast resin PUR 663)

Type	Cable Ø mm (from - to)	Conductor cross-section mm (to max.)	Socket dimensions A/B mm	Quantity of resin A/B
KM i-0	7 - 16	to 5 x 2,5	182 / 25	95 ml / 130 g
KM i-1	8 - 24	to 4 x 10 resp. 5 x 6	190 / 36	165 ml / 226 g
KM i-2	14 - 30	to 4 x 25 resp. 5 x 16	276 / 49	400 ml / 548 g
KM i-3	23 - 35	to 4 x 50 resp. 5 x 35	360 / 54	655 ml / 897 g
KM i-4	28 - 47	to 4 x 95	400 / 69	1.140 ml / 1.563 g
KM i-5	33 - 55	to 4 x 150	520 / 100	2 x 1.1450ml/ 1.897 g
KM i-6	48 - 70	to 4 x 240	700 / 128	4 x 1.650ml / 2.261 g



Scope of delivery:
i-joint, two-component cast resin pouch,
gloves, adhesive tape, assembly instructions



Two-component PUR 663 cast resin (low voltage, 0,6 kV - 1 kV)

Suitable for insulation and mechanical protection in the low voltage system.

Properties

- In practical transparent two-pocket receptable
- Excellent flow properties
- Highly Hydrophic
- Excellent adhesion to all plastic cables
- Does not crack under electrical stress
- Low exothermic reaction at large-volume resin
- Very good hydrolysis resistance



Storage time

36 months in aluminium protective bag at surrounding temperatures between 15°C and 35°C

according to DIN VDE 0291 Part 2, GNW, GMW, GFW

Type of resin	ml / g
PUR 663 KM i-0	95 ml / 116 g
PUR 663 KM i-1	165 ml / 226 g
PUR 663 KM i-2	220 ml / 301 g
PUR 663 KM i-3	400 ml / 548 g
PUR 663 KM i-4	655 ml / 897 g
PUR 663 KM i-5	1.445 ml / 1.980 g
PUR 663 KM i-6	1.650 ml / 2.261 g



Properties	Value	Unit
Viscosity	2,0	Pas
Gel time	20	Min
Potlife at 23°C	10	Min
Hardening	1,75	h
Max. reaction temperature	72	°C
Density	1,37	g/cm
Shore - Hardness D	55	Shore D
Tensile strenght	9	N/mm
Elongation at break	115 %	%
Volume shrinkage	≤ 0,54	%
Dielectric dissipation factor at 23°C	0,04	
Dielectric strenght at 23°C	> 20	KV/mm
Volume resistance	2,0 x 10 E14	
Volume resistance	8,0 x 10 E13	
Volume resistance	2,0 x 10 E13	
Tracking resistance	CTI 600	
Water absorbtion (24h/23°C)	47,5	mg
Water absorbtion (42h/50°C)	243	mg
Electrolytic corrosion	A 1,2	
Temperature resistance	-25 up to +120	°C
Shelf life	36	month



Y-joint

cast resin low voltage straight joints (0,6 kV - 1 kV)

The branch joints are suitable for all electrical installation work on all types of plastic cables and those made of PVC, PE, EPR and VPE (e.g. NYY, NYCWY) in the low voltage system.



Characteristics

- Two-piece, shock-resistant and transparent moulds
- Compact dimensions
- Preset cable diameter on the moulds
- Ready for use immediately
- Waterproof, both lengthwise and crosswise
- Branch joints castable underwater
- Storable for 36 months

Range of application

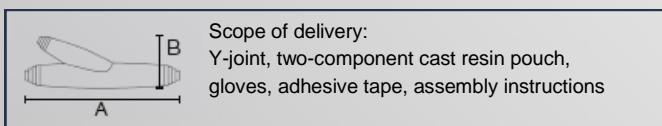
- Indoors
- In the ground
- Outdoors
- In water
- In installation circuits

according to VDE 278

according to DIN EN 50393

Branch joints suitable for all plastic cables (with cast resin PUR 663)

Type	Cable Ø mm (from - to)	Conductor cross-section mm (to max.)	Socket dimensions A/B mm	Quantity of resin A/B
KM Y-0	Cable: 10-24 Branch: 30° 10 - 24	3 x 1,5 to 4 x 10 3 x 1,5 to 4 x 10	190 / 60	240 ml / 329 g
KM Y-1	Cable: 8-24 Branch: 30° 8 - 22	3 x 1,5 to 5 x 10 3 x 1,5 to 5 x 6	205 / 70	490 ml / 671 g
KM Y-2	Cable: 25-33 Branch: 30° 8 - 22	4 x 16 to 5 x 25 4 x 6 to 5 x 16	350 / 98	1.445 ml / 1.980 g
KM Y-3	Cable: 23-40 Branch: 20° 13 - 28	4 x 16 to 5 x 16 4 x 10 to 5 x 10	330 / 90	995 ml / 1.308 g
KM Y-5	Cable: 35 - 51 Branch: 15° 17 - 33	4 x 70 to 4 x 150 4 x 10 to 4 x 50	298 / 120	2.045 ml / 2.802 g
KM Y-5	Cable: 35 - 51 Branch: 20° 17 - 40	4 x 95 to 4 x 185 4 x 10 to 4 x 95	430 / 130	2 x 1.450 ml / 1.897 g



T-Joint

cast resin low voltage branch joints (0,6 kV - 1 kV)

The branch joints are suitable for all electrical installation work on all types of plastic cables and those made of PVC, PE, EPR and VPE (e.g. NYY, NYCWY) in the low voltage system.



Characteristics

- Two-piece, shock-resistant and transparent moulds
- Compact dimensions
- Preset cable diameter on the moulds
- Ready for use immediately
- Waterproof, both lengthwise and crosswise
- Branch joints castable underwater
- Storable for 36 months

Range of application

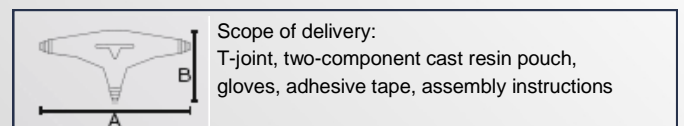
- Indoors
- In the ground
- Outdoors
- In water
- In installation circuits

according to VDE 278

according to DIN EN 50393

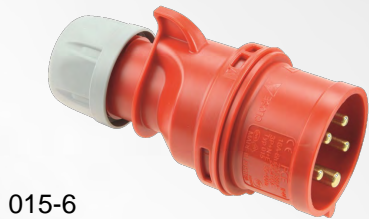
Branch joints suitable for all plastic cables (with cast resin PUR 663)

Type	Cable Ø mm (from - to)	Conductor cross-section mm (to max.)	Socket dimensions A/B mm	Quantity of resin A/B
KM T-1	Cable: 16 - 24 Branch: 90° 10 - 24	3 x 1,5 to 5 x 6 3 x 1,5 to 5 x 6	276 / 177	455 ml / 623 g
KM T-2	Cable: 25 - 32 Branch: 90° 18 - 25	to 4 x 35 / 5 x 16 to 4 x 25 / 5 x 10	380 / 225	2.045 ml / 2.802 g
KM T-3	Cable: 29 - 40 Branch: 90° 20 - 30	5 x 10 to 5 x 25 5 x 6 to 5 x 16	520 / 205	2 x 1.1450ml / 1.897 g



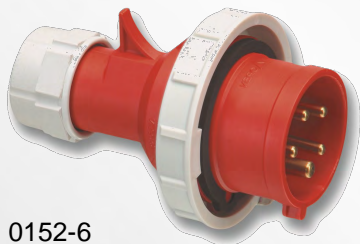
CEE Plugs

PCE



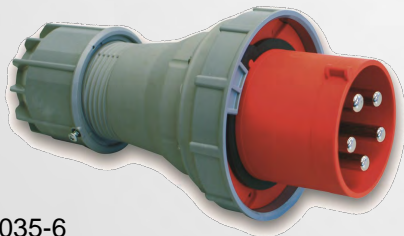
015-6
IP44 splashproof

Amp.	Poles	pack. unit	110V~	230V~	400V~
			50/60 Hz 4h	50/60Hz 3p=9h	50/60Hz 3p=9h
			Cat. No.	Cat. No.	Cat. No.
16	3	10	013-4	013-6	013-9
16	4	10	014-4	014-9	014-6
16	5	10	015-4	015-9	015-6
32	3	10	023-4	023-6	023-9
32	4	10	024-4	024-9	024-6
32	5	10	025-4	025-9	025-6



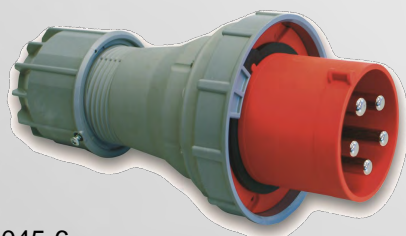
0152-6
IP67 watertight

16	3	10	0132-4	0132-6	0132-9
16	4	10	0142-4	0142-9	0142-6
16	5	10	0152-4	0152-9	0152-6
32	3	10	0232-4	0232-6	0232-9
32	4	10	0242-4	0242-9	0242-6
32	5	10	0252-4	0252-9	0252-6



035-6
IP66/67 watertight

63	3	2	033-4	033-6	033-9
63	4	2	034-4	034-9	034-6
63	5	2	035-4	035-9	035-6



045-6
IP67/67 watertight

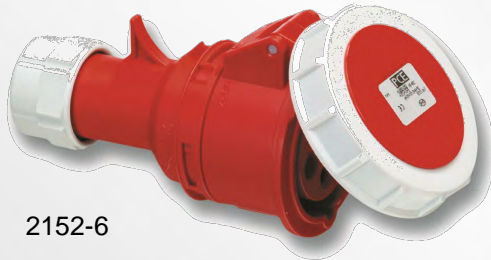
125	3	2	043-4	043-6	043-9
125	4	2	044-4	044-9	044-6
125	5	2	045-4	045-9	045-6

PCE



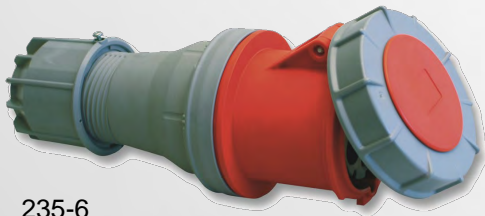
215-6
IP44 splashproof

Amp.	Poles	pack. unit	110V~	230V~	400V~
			50/60 Hz 4h	50/60Hz 3p=9h	50/60Hz 3p=9h
			Cat. No.	Cat. No.	Cat. No.
16	3	10	213-4	213-6	213-9
16	4	10	214-4	214-9	214-6
16	5	10	215-4	215-9	215-6
32	3	10	223-4	223-6	223-9
32	4	10	224-4	224-9	224-6
32	5	10	225-4	225-9	225-6



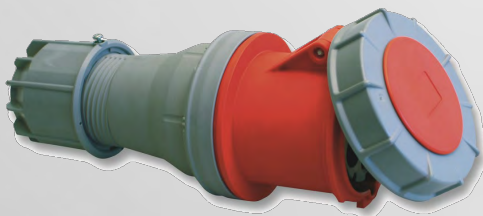
2152-6
IP67 watertight

16	3	10	2132-4	2132-6	2132-9
16	4	10	2142-4	2142-9	2142-6
16	5	10	2152-4	2152-9	2152-6
32	3	10	2232-4	2232-6	2232-9
32	4	10	2242-4	2242-9	2242-6
32	5	10	2252-4	2252-9	2252-6



235-6
IP 66/67 watertight

63	3	2	233-4	233-6	233-9
63	4	2	234-4	234-9	234-6
63	5	2	235-4	235-9	235-6

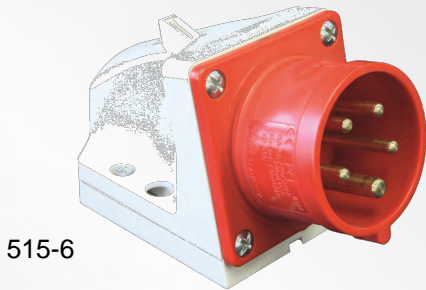


245-6
IP 66/67 watertight

125	3	2	243-4	243-6	243-9
125	4	2	244-4	244-9	244-6
125	5	2	245-4	245-9	245-6

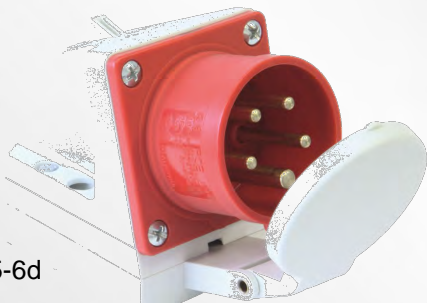
CEE Wall Mounted Plugs

PCE



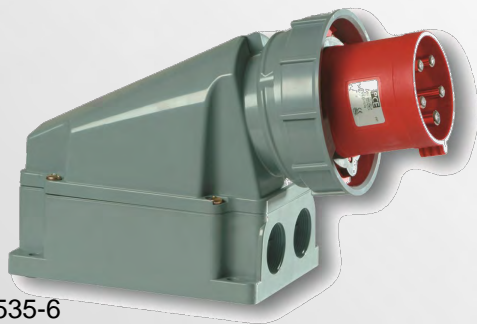
515-6
IP44 splashproof

Amp.	Poles	pack. unit	110V~	230V~	400V~
			50/60 Hz 4h	50/60Hz 3p=9h	50/60Hz 3p=9h
			Cat. No.	Cat. No.	Cat. No.
16	3	10	513-4	513-6	513-9
16	4	10	514-4	514-9	514-6
16	5	10	515-4	515-9	515-6
32	3	10	523-4	523-6	523-9
32	4	10	524-4	524-9	524-6
32	5	10	525-4	525-9	525-6



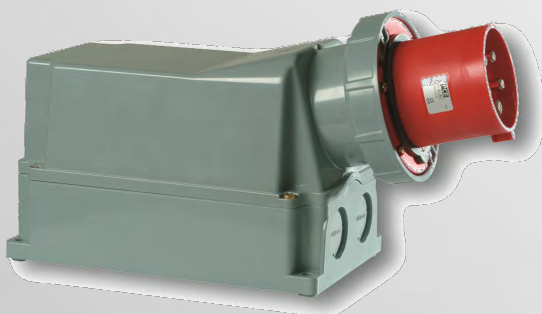
515-6d
IP44 splashproof

16	3	10	513-4d	513-6d	513-9d
16	4	10	514-4d	514-9d	514-6d
16	5	10	515-4d	515-9d	515-6d
32	3	10	523-4d	523-6d	523-9d
32	4	10	524-4d	524-9d	524-6d
32	5	10	525-4d	525-9d	525-6d



535-6
IP67/67 watertight

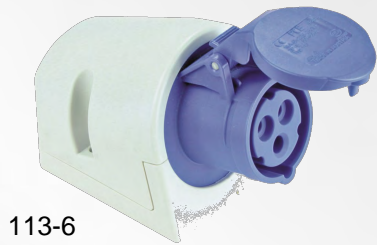
63	3	2	533-4	533-6	533-9
63	4	2	534-4	534-9	534-6
63	5	2	535-4	535-9	535-6



545-6
IP67/67 watertight

125	3	1	543-4	543-6	543-9
125	4	1	544-4	544-9	544-6
125	5	1	545-4	545-9	545-6

PCE



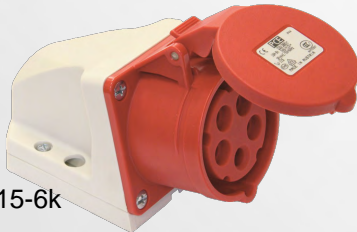
113-6
IP44 splashproof

Amp.	Poles	pack. unit	110V~	230V~	400V~
			50/60 Hz 4h	50/60Hz 3p=9h	50/60Hz 3p=9h
			Cat. No.	Cat. No.	Cat. No.
16	3	10	113-4	113-6	113-9
16	4	10	114-4	114-9	114-6
16	5	10	115-4	115-9	115-6
32	3	10	123-4	123-6	123-9
32	4	10	124-4	124-9	124-6
32	5	10	125-4	125-9	125-6



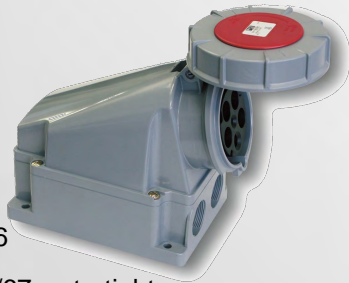
1152-6
IP67 watertight

16	3	5	1132-4	1132-6	1132-9
16	4	5	1142-4	1142-9	1142-6
16	5	5	1152-4	1152-9	1152-6
32	3	5	1232-4	1232-6	1232-9
32	4	5	1242-4	1242-9	1242-6
32	5	5	1252-4	1252-9	1252-6



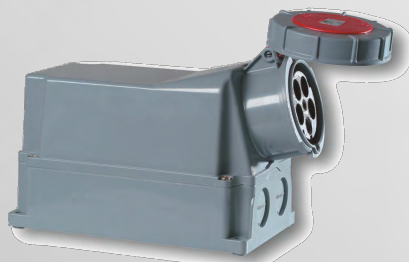
115-6k
IP44 splashproof

16	3	10	113-4k	113-6k	113-9k
16	4	10	114-.4k	114-9k	114-6k
16	5	10	115-4k	115-9k	115-6k
32	3	10	123-4k	123-6k	123-9k
32	4	10	124-4k	124-9k	124-6k
32	5	10	125-4k	125-9k	125-6k



135-6
IP66/67 watertight

63	3	2	133-4	133-6	133-9
63	4	2	134-4	134-9	134-6
63	5	2	135-4	135-9	135-6



145-6
IP66/67 watertight

125	3	1	143-4	143-6	143-9
125	4	1	144-4	144-9	144-6
125	5	1	145-4	145-9	145-6

Straight



315-6f7

IP44 splashproof
IP44/54 16/3 and 32/3 are splash- + dustproof

Amp.	Poles	pack. unit	110V~	230V~	400V~
			50/60 Hz 4h	50/60Hz 3p=9h	50/60Hz 3p=9h
			Cat. No.	Cat. No.	Cat. No.
16	3	10	313-4f7	313-6f7	313-9f7
16	4	10	314-4f7	314-9f7	314-6f7
16	5	10	315-4f7	315-9f7	315-6f7
32	3	10	323-4f7	323-6f7	323-9f7
32	4	10	324-4f7	324-9f7	324-6f7
32	5	10	325-4f7	325-9f7	325-6f7



3152-6

IP67 watertight

16	3	10	3132-4	3132-6	3132-9
16	4	10	3142-4	3142-9	3142-6
16	5	10	3152-4	3152-9	3152-6
32	3	10	3232-4	3232-6	3232-9
32	4	10	3242-4	3242-9	3242-6
32	5	10	3252-4	3252-9	3252-6

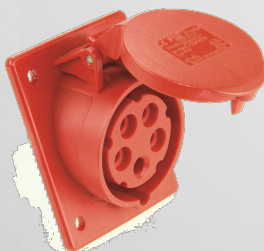


315-6

IP44 splashproof
IP44/54 16/3 and 32/3 are splash- + dustproof

16	3	10	313-4	313-6	313-9
16	4	10	314-4	314-9	314-6
16	5	10	315-4	315-9	315-6
32	3	10	323-4	323-6	323-9
32	4	10	324-4	324-9	324-6
32	5	10	325-4	325-9	325-6

Slopping



415-6

IP44 splashproof
IP44/54 16/3, 16/5 and 32/3 are splash- + dustproof

16	3	10	413-4f8	413-6f8	413-9f8
16	4	10	414-4f8	414-9f8	414-6f8
16	5	10	415-4	415-9	415-6
32	3	10	423-4	423-6	423-9
32	4	10	424-4	424-9	424-6
32	5	10	425-4	425-9	425-6

Rubber and Control Cables



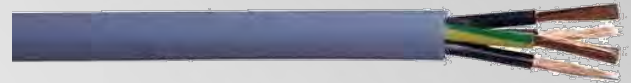
H05VV-F



H07RN-F



H05RR-F



JZ 500 - flexible

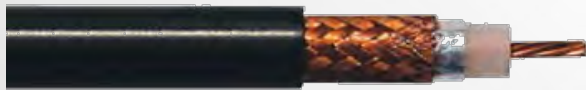


F-CY-JZ - copper screened



Y-CY-JZ - copper screened, transparent

SAT and Heat Reistant Cables

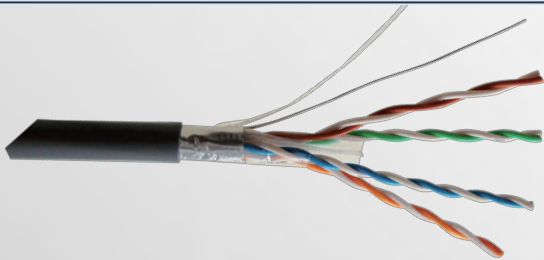


Coaxial Cable



SIF, SIF/GL, SIFF, SID, SID/GL

CAT Cables

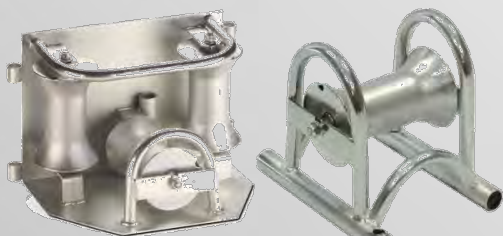


CAT 6



CAT 7

Cable Rollers



Cable Corner Rollers / Cable Laying Rollers
with steel roller bodies, running in ball bearings
and steel frame, galvanized

Art. No.	Carrying capacity	For cable dia. up to	Dimensions	Weight
080-1901-001 (laying type)	250 kg	150 mm	300 x 240 x 255 mm	3,70 kg
080-1901-031 (corner type)	500 kg (vertical rollers)	100 mm	550 x 340 x 360 mm	10,30 kg
	250 kg (horizontal rollers)			

more types available upon your request

Mechanical Cable Cutter for Cu and Al Cables

PVC coated handles with blue/yellow insulation, suitable for CU and AL Cables.

not suitable for cutting steel or steel wire



Art. No.	Cross Ref.	Cutting Range	Length
55100-16	K 100	max. Ø 14 mm	280 mm

Mechanical Cable Cutter for Cu and Al Cables

PVC coated handles with blue/yellow insulation, suitable for CU and AL Cables.

not suitable for cutting steel or steel wire



Art. No.	Cross Ref.	Cutting Range	Length
55100-98	K 101/1	max. Ø 26 mm	570 mm

Mechanical Cable Cutter for Cu and Al Cables

PVC coated handles with blue/yellow insulation, suitable for CU and AL Cables.

not suitable for cutting steel or steel wire



Art. No.	Cross Ref.	Cutting Range	Length
55120-98	K 101/2	max. Ø 38 mm	930 mm

Mechanical Cable Cutter for Cu and Al Cables

PVC coated handles with blue/yellow insulation, suitable for CU and AL Cables.

not suitable for cutting steel or steel wire



Art. No.	Cross Ref.	Cutting Range	Length
55120-52	K 130	max. Ø 30 mm	570 mm
55100-61	K 150	max. Ø 50 mm	710 mm

Mechanical Cable Cutter for Cu and Al Cables

PVC coated handles with blue/yellow insulation, suitable for CU and AL Cables.

not suitable for cutting steel or steel wire



Art. No.	Cross Ref.	Cutting Range	Length
SH 600	K 103/1	max. Ø 60 mm	720 mm

Mechanical Cable Cutter for Cu and Al Cables

PVC coated handles with blue/yellow insulation, suitable for CU and AL Cables.

not suitable for cutting steel or steel wire



Art. No.	Cross Ref.	Cutting Range	Length
SH 1000	K 104/1	max. Ø 100 mm	870 mm

Mechanical Cable Cutter for Cu and Al Cables

PVC coated handles with blue insulation, suitable for CU and AL Cables.

not suitable for cutting steel or steel wire



Art. No.	Cross Ref.	Cutting Range	Length
SH 320	K 106/1	max. Ø 32 mm	260 mm

Mechanical Cable Cutter for Cu and Al Cables

PVC coated handles with blue insulation, suitable for CU and AL Cables.

not suitable for cutting steel or steel wire



Art. No.	Cross Ref.	Cutting Range	Length
SH 500	K 106/2	max. Ø 52 mm	285 mm

Mechanical Crimping Tools with revolving dies Hexagonal crimping



Art. No.	Cross Ref.	Crimping Range	Length
55762-98	K 05	6-50 mm ²	390 mm
55765-98	K 06	10-120 mm ²	650 mm
55760-52	K 09	25-150 mm ²	650 mm

mechanical crimping tool for tubular cable lugs and connectors, standard type, with revolving dies, PVC coated handles, with blue/yellow insulation

Mechanical Crimping Tools with revolving dies Indent crimping



Art. No.	Cross Ref.	Crimping Range	Length
55740-98	K 5	6 - 50 mm ²	600 mm
55745-98	K 6	50 - 120 mm ²	970 mm
55750-98	K 7	120 - 240 mm ²	975 mm
55755-98	K 07	185 - 400 mm ²	975 mm
55743-98	K 8	35 - 95 mm ²	975 mm

mechanical crimping tool for tubular cable lugs and connectors, standard type, with revolving dies, PVC coated handles, with blue/yellow insulation

Crimping Hand Tool

suitable for red/blue/yellow insulated DIN cable lugs, pin cable lugs, tabs and receptacles, circular connectors and receptacles butt and parallel connectors



Art. No.	Cross Ref.	Red	Blue	Yellow
CK 90-44	CK 90	0,5 - 1,0 mm ²	1,5 - 2,5 mm ²	4,0 - 6,0 mm ²

Crimping Hand Tool

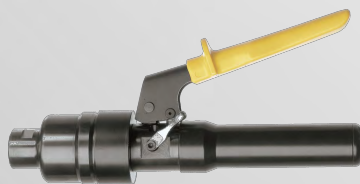
with exchangeable crimping Die Sets



Art. No.	Cross Ref.	Range	Application
CK 100 SET	CK 100-44	0,5 - 6,0 mm ²	red/blue/yellow cable lugs/ pin cable lugs, tabs, receptacles, circular connectors, butt parallel connectors
CK 100 SET	CK 100-65	0,5 - 10,0 mm ²	flat push-on receptacles and tabs without insulation
CK 100 SET	CK 100-AE21	0,14 - 10,0 mm ²	wire end ferrules with and without insulation sleeve

Hydraulic Punching Tools

punches accurate slugs nearly free of burs, easy single handed using with small effort



LS8



LS6



LS8-SET

Art. No.	Cross Ref.	Punching Capacity	Punching Force	Handle
LS8	50-600	steel plates up to max. 3 mm	80 kN	straight
LS6	50-099	steel plates up to max. 3 mm	60 kN	angled

Art. No.	Cross Ref.	Cutting Edges and Matrix	Components
LS8-SET	50-608	dia. 16,5mm (M16), 20,5mm (M20), 25,5mm (M25), 32,5 mm (M32)	3 Elastic Inserts, 1 Sleeve, 1 Adapter, 1 Rod, 1 Plastic Case with Insert

Hydraulic Crimping Tool with Foot Pump



Art. No.	Cross Ref.	Crimping Force	Crimping Range
SET PK 250 KI	PK 250	250 kN	16 - 630 mm ²
SET PK 450 KI	PK 450	450 kN	95 - 1.000 mm ²

foot-operated double piston pump, 700 bar, with automatic change-over and pressure relief valve and coupling, complete with 2 mtr. mounted high pressure hose, with rotating crimping head PK 250 or PK 450 in blue metal transport case

with yellow chromatised Cu-hexagonal crimping dies, sets consisting of the following dies:

SET PK 250 (14 pieces)

16, 25, 35, 50, 70, 95, 120, 150, 185, 240, 300, 400, 500, 630 mm²

SET PK 450 (11 pieces)

95, 120, 150, 185, 240, 300, 400, 500, 635, 800, 1.000 mm²

Hydraulic Cable Cutting Tool with Foot Pump



Art. No.	Cross Ref.	Cutting Force	Cutting Range
SET KS 85 KI	SK 85	70 kN	85 mm

foot-operated double piston pump, 700 bar, with automatic change-over and pressure relief valve and coupling, complete with 2 mtr. mounted high pressure hose, with rotating cutting head SK 85 in blue metal transport case

suitable for aluminium and copper cable

Hydraulic Foot Pump



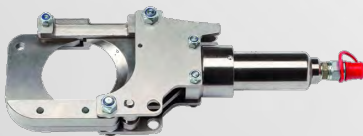
Art. No.	Pressure	Hose Length
FP 700	700 Bar	2 meters

foot-operated double piston pump with automatic change-over and pressure relief valve and coupling, complete with 2 mtr. mounted high pressure hose

Hydraulic Cable Cutter Head

chrome-plated rotating cutting head with double piston pump and automatic safety relief valve

suitable for medium high voltage, copper and aluminium cables



Art. No.	Cross Ref.	Cutting Force	Cutting Range
SK 85 KI	SK 85	70 kN	85 mm

Hydraulic Cable Cutter Head

black lacquered rotating cutting head with double piston pump and automatic safety relief valve



Art. No.	Cross Ref	Cutting Force	Cutting Range	Suitable
SK 120 KI	SK 120	100 kN	120 mm	Cu + Al
SK 120 ST-KI	ST 120	135 kN	120 mm	Armoured Copper

Hydraulic Cable Cutter Head

black lacquered rotating cutting head with double piston pump and automatic safety relief valve

suitable for copper and aluminium cables



Art. No.	Cross Ref.	Cutting Force	Cutting Range
SK 50 KI	SK 50	60 kN	50 mm

Hydraulic Cable Cutter Head

black lacquered rotating cutting head with double piston pump and automatic safety relief valve

suitable for **armoured copper** and aluminium cables and solid steel bars up to 16 mm



Art. No.	Cross Ref.	Cutting Force	Cutting Range
SK 45 KI	SK 45	70 kN	45 mm

Hydraulic Crimping Tool Set

battery powered with Memory Card, in blue metal carrying case

- battery tool APE 6-22 KI, incl. battery
- rotating crimping head
- 12 pieces yellow chromatised Cu-hexagonal crimping dies
- spare battery, battery charger, software and USB data cable



Art. No.	Crimping Force	Crimping Range
APE 6-22 KI	60 kN	10 - 300 mm ²

Hydraulic Crimping Tool Set

battery powered with Memory Card, in blue metal carrying case

- battery tool APE 13C KI, incl. battery
- rotating crimping head
- 13 pieces yellow chromatised Cu-hexagonal crimping dies
- spare battery, battery charger, software, and USB data cable



Art. No.	Crimping Force	Crimping Range
APE 13C KI	130 kN	10 - 400 mm ²

Hydraulic Cable Cutter

battery powered with Memory Card, in blue metal carrying case

- battery tool ASE 85 KI, incl. battery
- rotating cutting head
- spare battery, battery charger, software, USB data cable



Art. No.	Cutting Force	Cutting Range
ASE 85 KI	70 kN	max. 85 mm ²

Hydraulic Crimping Tool Set

hand-operated, with rotating C-compression head, double piston pump and automatic safety relief valve, in blue metal carrying case

complete with yellow chromatised CU-hexagonal crimping dies (12 pcs)



Art. No.	Cross Ref.	Crimping Force	Crimping Range
SET PK 130 KI	PK 130 C	130 kN	10 - 400 mm ²

Hydraulic Crimping Tool Set

hand-operated, with rotating H-compression head, double piston pump and automatic safety relief valve, in blue metal carrying case

complete with yellow chromatised CU-hexagonal crimping dies (12 pcs)



Art. No.	Cross Ref.	Crimping Force	Crimping Range
SET HP 60H KI	HP 60 H	60 kN	6 - 240 mm ²

Hydraulic Crimping Tool Set

hand-operated, with rotating round-compression head, double piston pump and automatic safety relief valve, in blue metal carrying case

complete with yellow chromatised CU-hexagonal crimping dies (12 pcs)



Art. No.	Cross Ref.	Crimping Force	Crimping Range
SET HP60/22 KI	HP 60/22	60 kN	10-300 mm ²

Hydraulic Cable Cutter HKS

hand-operated, with rotating cutting head, double piston pump and automatic safety relief valve, in blue metal carrying case

suitable for copper and aluminium cables.



Art. No.	Cross Ref.	Cutting Force	Cutting Range
HS 45 KI	45 KI	60 kN	max. 45 mm ²
HS 50 KI	50 KI	60 kN	max. 50 mm ²
HS 85 KI	85 KI	70 kN	max. 85 mm ²

Cable and Wire Strippers

JOKARI
original

**MADE
IN GERMANY**



For all common
round PVC cables

Art. No.	Cable
57000	1,50 mm Ø



For most common
coaxial-cable types
and round PVC cables

Art. No.	Coaxial Cable	PVC Cable
30600	4,8 - 7,5 mm Ø	3 - 0,75 mm ²



For all damp-proof cables

Art. No.	Cable	e.g. NYM Cables
30155	8 - 13 mm Ø	3 x 1,5 to 5 x 2,5 mm ²

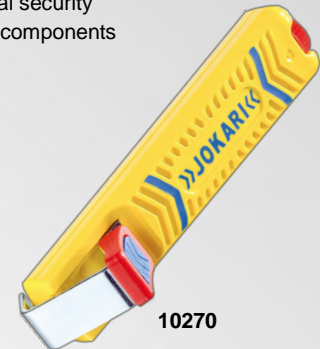
For all common round cables,
with automatic TIN coated swivel-blade,
screw to adjust cutting depth,
spare-blade is stored inside the handle

Art. No.	Cable
10160	4 - 16 mm Ø
10270	8 - 28 mm Ø
10350	27 - 37 mm Ø



10350

Additional security
by soft components



10270



20100 with soft grip handle

Ergonomic and automatic wire stripper, suitable for cables
and wires with insulation of PVC and other materials

Art. No.	Cable
20100	0,2 - 6 mm ²
20090	6 - 16 mm ²



20090



29310

Qualified for use on:

- PUR halogen-free cables
- Highly flexible TPE-U-Cables
- PUR-cables
- PUR/PVC-Cables
- PVC-Cables
- Multi-Stranded Cables
- Shielded and non-shielded cables

Art. No.	Cable
29310	3,2 - 4,4 mm ²
29300	4,4 - 7 mm ²



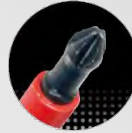
29300

VDE Screwdrivers



ALL-IN-ONE 1 SCREWDRIVER for 6 SIZES

ALL-IN-ONE Screwdriver VDE



only 1 screwdriver covers 6 different cross slot sizes i.e. PH No. 1, 2, 3 and PZ No. 1, 2, 3

red insulated blade, with black tip, insulated up to 1000V AC, GS approved

Blade: from high-alloy special steel
Handle: ergonomical design, 2 component type

Art. No.	Blade length	Handle length
SET 67150	100 mm	117 x 33 mm



sales assistance with 36 pieces

Screwdrivers Set VDE

red insulated blade, with black tip, insulated up to 1000V AC, GS approved



Comfort Line VDE
Art. No. 65604



Basic Line VDE
Art. No. 56080

Art. No.			
65604	4x	Art. No. 6647	2.5 x 75; 4.0 x 100; 5.5 x 125; 6.5 x 150
	2x	Art. No. 6636	PH 1; PH 2 (optional PZ)
	1x	Art. No. 401	Voltage Tester
56080	3x	Art. No. 647	2.5 x 75; 4.0 x 100; 5.5 x 125; 6.5 x 150
	2x	Art. No. 636	PH 1; PH 2 (optional PZ)
	1x	Art. No. 401	Voltage Tester

Screwdrivers Comfort Line VDE

red insulated blade, with black tip, 2 component handle, insulated up to 1000V AC, GS approved

1 VDE - Electricians Slot

2 VDE PH/PZ - Cross Tip



Screwdrivers Basic Line VDE

red insulated blade, with black tip, basic plastic handle, insulated up to 1000V AC, GS approved

3 VDE - Electricians Slot

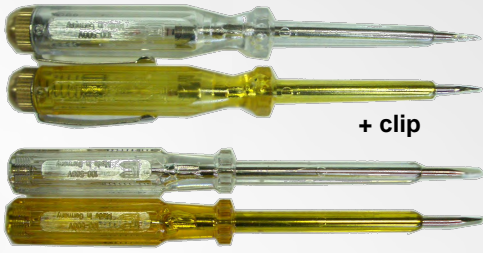
4 VDE PH/PZ - Cross Tip



mm	1 Art. No.	3 Art. No.
2.5 x 75	66470	64700
2.5 x 75	66471	64701
3.0 x 100	66472	64702
3.5 x 100	66473	64703
4.0 x 100	66474	64704
5.5 x 125	66475	64705
6.5 x 150	66476	64706
8.0 x 175	66477	64707
10.0 x 200	66478	64708

PH	2	4
	Art. No.	Art. No.
0	66360	63600
1	66361	63601
2	66362	63602
3	66363	63603
4	66364	63604
PZ	2	4
	Art. No.	Art. No.
0	66380	63800
1	66381	63801
2	66382	63802
3	66383	63803
4	66384	63804

Voltage Tester 100 - 500 V with brass cap



+ clip

clear

Art. No.	Colour	Length
451 PM/k	clear	125 mm
452 PM/k	clear	140 mm



yellow

Art. No.	Colour	Length
451 PM/g	yellow	125 mm
452 PM/kg	yellow	140 mm



Art. No.	Colour	Length
457 PM/k	clear	190 mm

Art. No.	Colour	Length
457 PM/g	yellow	190 mm

Voltage Tester 100 - 500 V with plastic cap and clip



clear

Art. No.	Colour	Length
451 P/k	clear	125 mm
452 P/k	clear	140 mm



yellow

Art. No.	Colour	Length
451 P/g	yellow	125 mm
452 P/kg	yellow	140 mm

Euro Voltage Tester 125 - 500 V with plastic clip

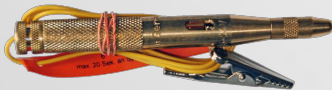
Art. No.	Colour	Length
45300P/b	blue	150 mm
45800P/b	blue	190 mm

Art. No.	Colour	Length
45400P/r	red	150 mm
45900P/r	red	190 mm

Art. No.	Colour	Length
45300P/o	orange	150 mm
45800P/o	orange	190 mm



Car Light Tester 6 - 24 V with cable and crocodile clip



brass

Art. No.	Colour	Length
4598 A	yellow	120 mm



PVC

Art. No.	Colour	Length
4568 A	yellow	120 mm

Spark Plug Tester



Art. No.	Colour	Length
4568Z	yellow	120 mm

Car Light + Spark Plug Tester Set 6 - 24 V

with cable and crocodile clip,
in single plastic wallets
including Art. No. 4568A + 4568Z

Art. No.	Colour	Length
4518 ZAT	yellow	120 mm

SECUPEN Voltage Tester 100 - 250V



Art. No.	Length	Packing
17150A/C	137 mm	1000 pcs
17151/C	215 mm	400 pcs

with clip hanger



Art. No.	Length	Packing
17150A/B	137 mm	400 pcs/box
17151/B	215 mm	600 pcs/box

without clip hanger, bulk packing



Art. No.	Length	Packing
17150A/D	137 mm	40pcs/box
17151/D	215 mm	40 pcs/box

without clip hanger, in display box

Electronic Voltage Tester



Volt Check 3.1 IP 40

Art. No.	Range	Display
991895	6-400V AC/DC	LED



Master Check battery powered, IP 65

Art. No.	Range	Display
991888	6-400V AC/DC	LED



Combi Check battery powered, IP 65

Art. No.	Range	Display
991886	6-690V AC/DC	LED



Combi Check PRO battery powered, IP 65

Art. No.	Range	Display
127933	6-690V AC/DC	LED



Multi Check battery powered, IP 65

Art. No.	Range	Display
991892	5-500V AC/DC	LCD



Digi Check battery powered, IP 65

Art. No.	Range	Display
991885	5-690V AC/DC	LCD



Digi Check PRO battery powered, IP 65

Art. No.	Range	Display
991887	5-690V AC/DC	LCD



Detectors



Electronic Multi Tester MT 6 S/2



- non-contact location of cables with AC voltage
- checking phase, neutral and earthing conductor at the sockets
- continuity check, e.g. of fuses, bulbs etc.
- polarity check, e.g. of batteries
- display through the LED
- small and handy
- can be used as a torch because of the super-bright LED
- inclusive 3 replaceable coin cells



Art. No.	Packing
1 29715 0	5 pieces

Moisture Detector MD



- to determine the moisture content of wood building material, such as e.g. concrete, brick, screed, plasterboard, wallpaper etc
- measuring range of 5-50% for wood, or 1,5-33% for building material
- large LCD display (resolution 0,1%) as well as acoustically
- practical hold function also makes measurement possible at locations difficult to access
- automatic switch-off appr. 3min after last application
- battery low voltage display
- robust, ergonomic housing with separate compartment for 9V monobloc battery (not included)
- with protective cap

Art. No.	Packing
129 86 80	1 piece

Multifunction Detector WMV Plus



- for locating metal, voltage carrying cables (AV voltage) and wooden beams e.g. in walls
- 3 functions on one appliance, functions can be individually applied
- accurate display of the result on large LCD display
- automatic sensitivity control
- battery compartment for 9V block (battery not included)
- automatic switch-off after end of measurement
- battery low voltage display
- maximum detection: wood up to 40mm, AC voltage appr. 30-50mm, metal appr. 50-80mm
- user friendly through the operation button on the side and front.

Art. No.	Packing
1 29818 0	1 piece

Hot Air Guns

STEINEL
Intelligent technology

HL 1400 S



345914

- promotion type - starter model

HL 1610 S



348014

- with two heating and airflow stages

Art. No.	Output (Watt)	Melt Temp. (°C)	Voltage	Airflow Rate	Temp. Setting
345914	1400	300 / 500	230 - 240	In 2 steps	2-stage
348014	1600	300 / 500	230 - 240	In 2 steps	2-stage

HL 1810 S



348113

- with three heating and airflow stages

HL 1910 E



348410

- electronically controlled hot air gun with temperature control and cool air stage

Art. No.	Output (Watt)	Melt Temp. (°C)	Voltage	Airflow Rate	Temp. Setting
348113	1800	50 / 400 / 600	230 - 240	In 3 steps	3-stage
348410	2000	50 - 600	230 - 240	In 3 steps	9 steps

HL 2010 E



348212

- with LCD display
- microprocessor controlled hot air gun with temperature control and cool air stage

HG 2310 LCD - Professional Series



348311

- electronically controlled hot air gun with continuously adjustable air flow and temperature control
- LCD display mode in 10°C steps

Art. No.	Output (Watt)	Melt Temp. (°C)	Voltage	Airflow Rate	Temp. Setting
348212	2000	50 - 630	230 - 240	In 3 steps	in 10°C steps
348311	2300	50 - 650	230 - 240	In 2 steps	-



GLUEMATIC 3002



333317

- attractively priced glue gun
- electronically controlled with high melt capacity for diyers and professional users

SET GLUEMATIC 3002



333393

- attractively priced glue gun
- electronically controlled with high melt capacity for diyers

Art. No.	Output (Watt)	Melt Temp. (°C)	Voltage
333317	200	206	100 - 240
333393	200	206	100 - 240

GLUEFIX



333911

- small hot-melt glue applicator in a modern design for craft work and decorating
- high melting capacity

GLUEMATIC 5000



332716

- electronically controlled hot-melt glue
- applicator with a very high melting capacity for cordless glueing, including long and short nozzle

SET GLUEMATIC 5000

with 200 g glue sticks and spare nozzle, packed in PVC case
Art. No. 332754

Art. No.	Output (Watt)	Melt Temp. (°C)	Voltage
333911	175	200	100 - 240
332716	500	210 - 220	220 - 240
332754	500	210 - 220	220 - 240

Cordless Hot-Melt Glue Gun Neo 3

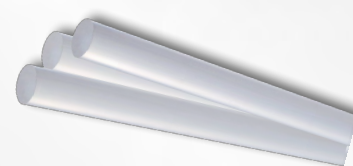


331115

- with lithium-ion battery 7,2 V - battery pack
- the first hot-melt glue applicator powered by rechargeable battery
- run time up to 45 minutes
- automatic switch off
- warm up time less than 15 sec.

Art. No.	Voltage
33115	230 - 240

Glue Sticks Neo
dia 7 mm, length 150 mm
60 g, transparent (crystal)
Art. No. 040413



Glue Sticks suitable for a.m. models
dia 11 mm, length 250 mm

Art. No.	Weight / Pack	Colour
042035	200 g	Transparent
044930	500 g	Transparent
046910	1000 g	Transparent
048112	200 g	White

Hole Saws

STERN

Bi-Metal Hole Saws

M42 / 4 - 6 tpi, white



Accessoires



Art. No.	Width (mm)	Art. No.	Width (mm)	Art. No.	Width (mm)	Art. No.	Width (mm)	Art. No.	Width (mm)
CT 14	14	CT 32	32	CT 52	52	CT 76	76	CT 121	121
CT 16	16	CT 33	33	CT 54	54	CT 79	79	CT 127	127
CT 17	17	CT 35	35	CT 57	57	CT 83	83	CT 133	133
CT 19	19	CT 37	37	CT 58	58	CT 86	86	CT 140	140
CT 20	20	CT 38	38	CT 59	59	CT 89	89	CT 146	146
CT 21	21	CT 40	40	CT 60	60	CT 92	92	CT 152	152
CT 22	22	CT 41	41	CT 63	63	CT 95	95	CT 160	160
CT 23	23	CT 43	43	CT 64	64	CT 98	98	CT 168	168
CT 24	24	CT 44	44	CT 65	65	CT 102	102	CT 177	177
CT 25	25	CT 46	46	CT 67	67	CT 105	105	CT 200	200
CT 27	27	CT 48	48	CT 68	68	CT 108	108	CT 210	210
CT 29	29	CT 50	50	CT 70	70	CT 111	111		
CT 30	30	CT 51	51	CT 73	73	CT 114	114		

Art. No.	Arbors
A1	8,5 mm / Ø 14 - 30 mm - hex shank
A2	11 mm / Ø 14 - 30 mm - hex shank
A3	8,5 mm / Ø 32 - 210 mm - hex shank, pull system
A4	11 mm / Ø 32 - 210 mm - hex shank, pull system
A5	11 mm / Ø 32 - 210 mm - hex shank, screw system
A7	Ø 14 - 30 mm - SDS
A8	Ø 32 - 210 mm - SDS, pull system
A10	6,35 mm / Ø 14 - 30 mm - three-sided shank
Drills	
B1	6,35 mm / Ø 83mm - for A1, A2, A3, A4, A5, A7, A8
B2	6,35 mm / Ø 105mm - for A1, A2, A3, A4, A5, A7, A8, A10
Extension Bars	
V 8,5	300mm - for A1, A3, A13
V 10	300mm - for A2, A4, A5, A15
F	Pressure Spring

Pliers

Original ODÜR „Fit“ Shear Pliers

ODÜR - FIT Pliers

Polished and high quality plastic handles



14/8"



15/8"

14/8" 12 individually boxes packed in one display carton

300 pcs in wooden case or 720 pcs in strong export carton

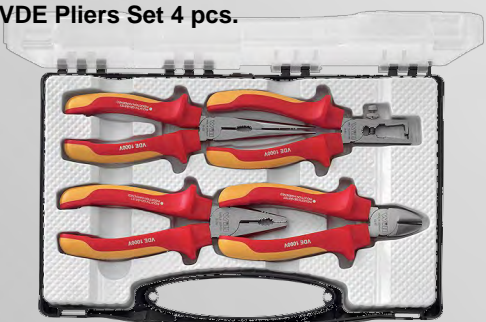
15/8" 12 individually hang up cartons packed in one carton packing.



Art. No.	Handle	Length	Weight	Packing
14/8"	Isolated	200 mm / 8 inch	280 g	Single Box
15/8"	2-component handles	200 mm / 8 inch	300 g	Hang Up

Pliers

VDE Pliers Set 4 pcs.



- 1 x long nose plier (35/160)
- 1 x side cutting plier (40/160)
- 1 x combination plier (65/180)
- 1 x insulation stripping plier (79/160)

packing in strong display box

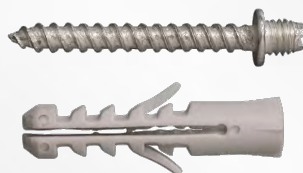
Art. No.	Handle
A3-VDE-2K	VDE heavy opaque
A3-VDE-SF	VDE directly injected

Steel Collars



Steel Collars for Light Pipes

- band size 16 x 1,2 mm
- thread M6
- bulk packing with 100 pcs.



Nylon Plug VN with white zinc-plated screw

- For clamp CT
- bulk packing with 100 pcs.

Art. No.	Type	Thread	Plug mm	Hole dia. mm
768	VN V 8 x 40	M6	40	8

Art. No.	Type	pipes for (mm)
1402	CT14	14
1403	CT16	16
1404	CT18	18
1405	CT20	20
1406	CT22	22
1407	CT24	24
1408	CT26	26
1409	CT28	28
1410	CT32	32
1415	CT35	35
1411	CT38	38
1412	CT42	42
1413	CT48	48
1414	CT50	50



Steel Collars Set

- Containing steel collars, white zinc-plated screws, with wall plugs, blister packing

Art. No.	Type	pipes for (mm)	pieces / pack
3189	CTV 10.S	10	5 each
3190	CTV 12.S	12	5 each
3191	CTV 14.S	14	4 each
3192	CTV 16.S	16	4 each
3193	CTV 18.S	18	4 each
3194	CTV 20.S	20	4 each
3195	CTV 22.S	22	4 each
3196	CTV 24.S	24	4 each
3197	CTV 26.S	26	3 each
3198	CTV 28.S	28	3 each
3199	CTV 32.S	32	3 each
3202	CTV 38.S	38	2 each
3203	CTV 42.S	42	2 each

Screws and Anchors



Screws and Anchors Set

- for brick and concrete

- 100 sets / carton

Art. No.	Size	Pieces / Set
280420/EGK	4 x 20mm	25 pieces
280525/EGK	5 x 25mm	20 pieces
280630/EGK	6 x 30mm	12 pieces
281840/EGK	8 x 40mm	8 pieces
281050/EGK	10 x 50mm	4 pieces
281260/EGK	12 x 60mm	2 pieces

NH - Fuse Links



Type: 0



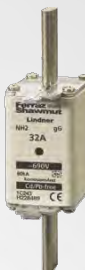
Type: 00



Type: 000



Type: 1



Type: 2



Type: 3

Neozed & Bottle Fuses



Type: NDZ



Type: D I



Type: D II



Type: D III



Type: D IV



Type: D V

Accessories



Fuse Caps

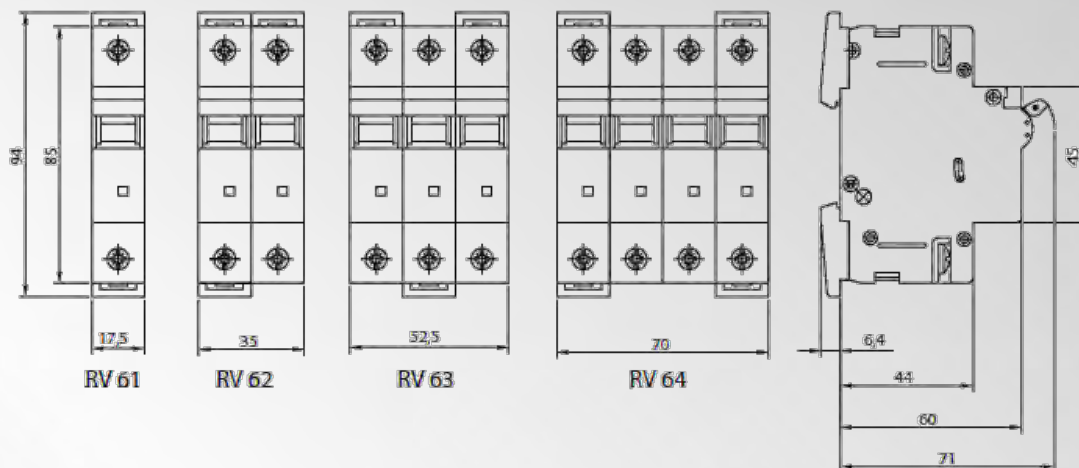


Fuse Bases



Fuse Bases

RV 60



Rated Current A	1 - Pole	1 + N Pole	2 - Pole	3 - Pole	3 + N - Pole
25 A	RV 61 25A	RV 61 + N 25A	RV 62 25A	RV 63 25A	RV 63 + N 25A
63 A	RV 61 25A	RV 61 + N 63A	RV 62 63A	RV 63 63A	RV 63 + N 63A



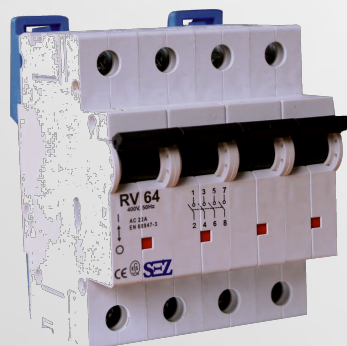
1 - pole



2 - pole



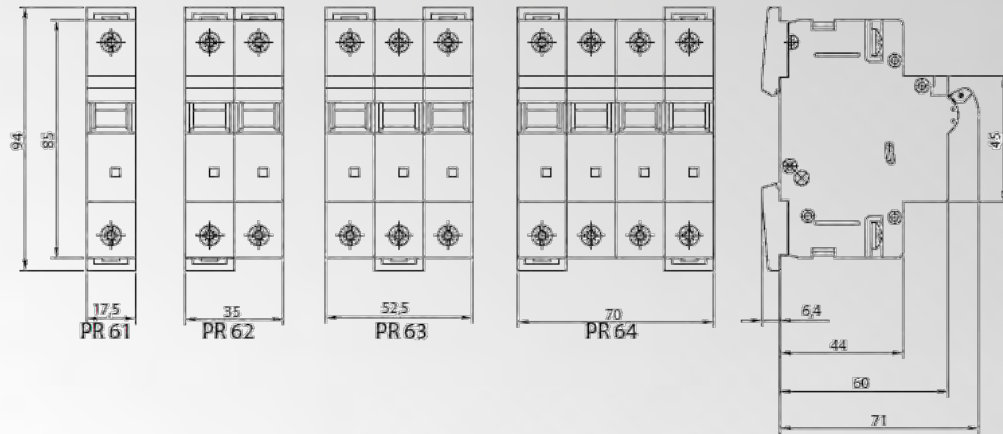
3 - pole



4 - pole

Standards		EN 60 947-3
Number of poles		1; 1+N, 2; 3; 3+N
Rated currents I_n	A	25; 63
Rated voltage U_n	V	230; 400
Rated frequency	Hz	50 - 60
Application category		AC 22A
Rated conditional short-circuit current	kA	3 (RV 60 63A with fuses 63 AgG)
		6 (RV 60 63A with fuses 35 AgG)
		10 (RV 60 25A with fuses 25 AgG)
Electrical endurance	switching cycles	1 500
Mechanical endurance	switching cycles	100 000
Cross sectional area of inlet conductors	mm ²	1,5 – 25 for Cu wires
		2,5 – 25 for Al wired
Mounting		on DIN rail 35x7,5 EN 60 715
		on board
Degree of protection		IP 20
		IP 40 from the front panel
Ambient temperature	°C	-25 to +55
Operation position		optional
Resistance against vibrations		3g (from 8 to 50 Hz)

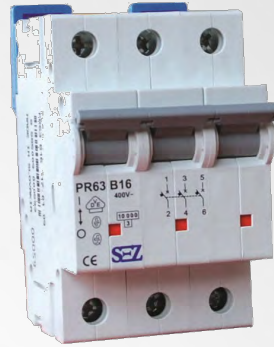
PR 60 - Characteristics C



1 - pole



2 - pole



3 - pole

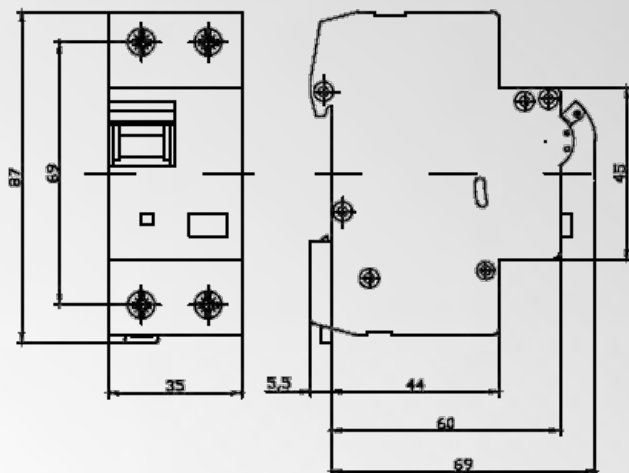


4 - pole

Rated Current A	1 - Pole	2 - Pole	3 - Pole	4 - Pole
0,5	PR 61-C 0,5	PR 62-C 0,5	PR 63-C 0,5	PR 64-C 0,5
1	PR 61-C 1	PR 62-C 1	PR 63-C 1	PR 64-C 1
2	PR 61-C 2	PR 62-C 2	PR 63-C 2	PR 64-C 2
3	PR 61-C 3	PR 62-C 3	PR 63-C 3	PR 64-C 3
4	PR 61-C 4	PR 62-C 4	PR 63-C 4	PR 64-C 4
6	PR 61-C 6	PR 62-C 6	PR 63-C 6	PR 64-C 6
8	PR 61-C 8	PR 62-C 8	PR 63-C 8	PR 64-C 8
10	PR 61-C 10	PR 62-C 10	PR 63-C 10	PR 64-C 10
13	PR 61-C 13	PR 62-C 13	PR 63-C 13	PR 64-C 13
16	PR 61-C 16	PR 62-C 16	PR 63-C 16	PR 64-C 16
20	PR 61-C 20	PR 62-C 20	PR 63-C 20	PR 64-C 20
25	PR 61-C 25	PR 62-C 25	PR 63-C 25	PR 64-C 25
32	PR 61-C 32	PR 62-C 32	PR 63-C 32	PR 64-C 32
35	PR 61-C 35	PR 62-C 35	PR 63-C 35	PR 64-C 35
40	PR 61-C 40	PR 62-C 40	PR 63-C 40	PR 64-C 40
50	PR 61-C 50	PR 62-C 50	PR 63-C 50	PR 64-C 50
63	PR 61-C 63	PR 62-C 63	PR 63-C 63	PR 64-C 63

Standards	EN 60 898-1, EN 60 947-2
Number of poles	1, 1+N, 2, 3, 3+N, 4
Tripping characteristics	B, C, D according to EN 60 898-1 M - EN 60 947-2
Rated currents I _n	A 0,2 up to 63
Rated voltage U _n	V 230
Rated DC voltage U _n	V max. 40V DC - 1 pole - for t = 15ms
Rated frequency f	Hz 50
Short-circuit breaking capacity	kA 10
Selection category	3
Electrical endurance	4 000 switching cycles
Mechanical endurance	100 000 switching cycles
Connecting wires	mm ² 1,5 – 25 for Cu conductors 2,5 – 25 for Al conductors
Mounting	on DIN rail 35x7,5 EN 60 715 on panel
Degree of protection	IP 20 IP 40 from the front panel
Ambient temperature	°C -25 to +55
Working positions	optional
Resistance against vibrations	3g (from 8 to 50 Hz)
Approved	ESS, EŠC, VDE

PFB and PCHB



PFB2



PFB4



PCHB2



PCHB4

Versions			PFB2	PFB4	PCHB2	PCHB4
Types			A, AC			
Number of poles			2	4	2	4
Rated current	I_n A		16 - 63	16 - 63	16 - 100	16 - 100
Rated residual operating current	$I_{\Delta n}$ A		0,01 - 0,5	0,03 - 0,5	0,01 - 0,5	0,03 - 0,5
Rated voltage	U_n V		230	230/400	230	230/400
Rated frequency		Hz	50	50	50/60	50/60
Rated res. making and breaking capacity	I_m	$I_{\Delta m}$	630	630	800; 1000 for $I_n = 100A$	
Rated res. making and breaking capacity						
Max. conventional	$I_{\Delta m}$					
Back-up fuses GL	I_n	A	63; 80 for $I_n=63$		and 80A; 100 for $I_n=100A$	
Rated conditional						
Short-circuit current	I_{cn}	A	10000;	6000	for $I_n = 100A$	
Protection degree			IP 20; IP40 after		installation	
Mounting position			optional			
Ambient temperature		°C	from -25°C		to +40°C	
Weight		g	250	435	230	390
Terminal capacity		mm ²	1,5 to 25		1 to 35	
Accessories			Auxiliary and signal contacts		sealing	cover



AlphaRex D21

Daily and weekly time switch

- 1 changeover contact
- 250 V/50 Hz, 16 A~ cos ϕ = 1
- 56 programs
- Shortest switching step: 1 s
- multi languages

Art. No.	Volt	Hz	Channels
4 126 31	230 V	50/60 Hz	1
4 126 41	230 V	50/60 Hz	2



MicroRex D22 Plus 2

Weekly Time Switch

Art. No.	Volt	Hz	Channels
603 770	230 V	50/60 Hz	1
603 771	230 V	50/60 Hz	2

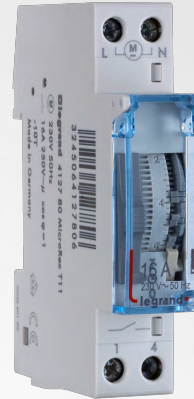


MicroRex QT31 - 3 Modules

Daily time switch

With quartz motor, +/- 2.5 s/day clock precision, 100 hour running reserve, Surface-mounting possible with a wall bracket and a terminal cover. Unit width: 3 modules of 17.5 mm each, 15 min switching increments, shortest switching step: 30 min

Art. No.	Volt	Hz
4 128 13	230 V	50/60 Hz



MicroRex QT11 - 1 Module

With synchronous (mains-synchronised clock precision), +/- 2.5 s/day clock precision, 100 hour running reserve, Unit width: 1 module of 17.5 mm, 15 min switching increments, Shortest switching step: 15 min

Art. No.	Volt	Hz
4 127 90	230 V	50/60 Hz



EconoRex MT

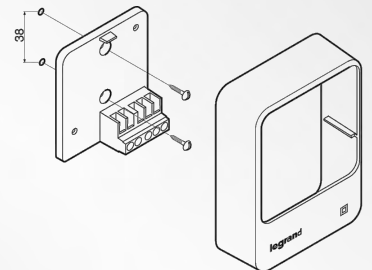
Time switch modules with flat plugs for panel mounting (without accessoires) 24 hour, without running reserve

Art. No.	Volt	Hz
499 83	230 V	50 Hz

Suitable Wall Mounting Kit for EconoRex M

Includes base plate with terminas and terminal cover

Art. No. 495 94



PolarRex KKT

Defrost time switches without running reserve, 24 hour

Art. No. 499 26

Art. No.	Volt	Hz	Channels
499 26	230 V	50 Hz	2



Multifunction Relay's

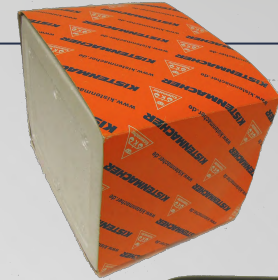
To control single timer functions like: illumination, ventilation, automation, signalisation, control systems e.g. Sealable cover, lexic design

more details upon request

Art. No. 047 44

Art. No.	Volt	Hz	Channels
047 44	8A / 250V	50/60 Hz	1

KISTENMACHER Kilowatt Hour Meters provide a measuring solution in the popular classic style. Other types and digital meters are available on request.



Single Phase Active Kilowatt Hour Meters - DD28-Series:

for indoor wall installation.

Manufactured according to standards GB/T15283 and IEC 62053-11

for direct connection

Dimensions: 190 x 114 x 108 mm

Aluminium cover (plastic and glass covers are available on request)

Art.-No.	Rated Current	Rated Voltage	Overload Capacity	Starting Current	Accuracy class	Pieces / carton
EGK DD28/3	3(12)A	220-230V 50/60 Hz.	400% lb	0.5% lb	2.0	12 pcs.
EGK DD28/5	5(20)A					
EGK DD28/10	10(40)A					
EGK DD28/15	15(60)A					
EGK DD28/30	20(80)A					



Single Phase Active Kilowatt Hour Meters - DD862-Series:

Art.-No.	Rated Current	Rated Voltage	Overload Capacity	Starting Current	Accuracy class	Pieces / carton
EGK DD862/2,5	2,5(10)A	220-230V 50/60 Hz.	400~600% lb	0.5% lb	2.0	12 pcs.
EGK DD862/3	3(12)A					
EGK DD862/5	5(20)A					
EGK DD862/10	10(40)A					
EGK DD862/15	15(60)A					
EGK DD862/20	20(80)A					
EGK DD862/30	30(100)A					



Three-Phase Active Kilowatt Hour Meters - DT862-Series:

for indoor wall installation.

Manufactured according to standards GB/T15283 and IEC 62053-11

for direct connection (versions for connection through current transformers are available on request).

Dimensions: 214 x 122 x 123 mm

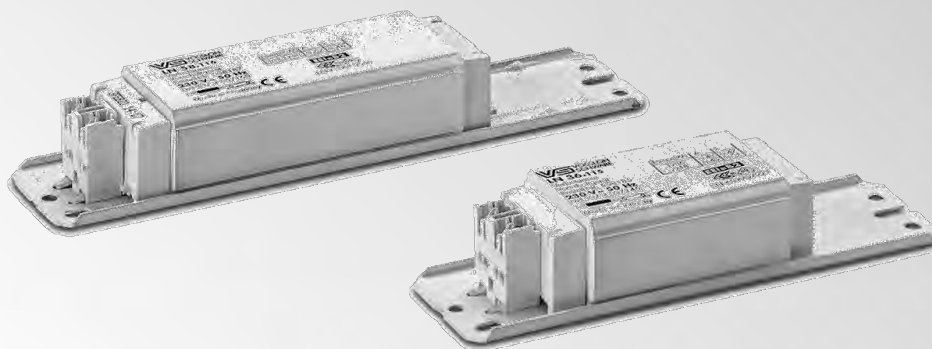
Plastic cover (aluminium, bakelite and glass covers are available on request)

Art.-No.	Rated Current	Rated Voltage	Accuracy class	Pieces / carton
EGK DT862/5	3 x 5(20)A	3 x 220/380V 50/60 Hz.	2.0	12 pcs.
EGK DT862/10	3 x 10(40)A			
EGK DT862/15	3 x 15(60)A			
EGK DT862/20	3 x 20(80)A			
EGK DT862/30	3 x 30(100)A			



Reconditioned meters are also available under the following brands, upon your request:





5 - 18 W, 240/220 V

shape: 28 x 41 mm

Output W	Type	Base	Current mA	Type	Ref. No.	Voltage V, Hz	A mm	B mm	C mm	Weight kg	$\Delta t/\Delta t_{an}$ K	Energy efficiency	C_p μF	Current mA
-------------	------	------	---------------	------	----------	------------------	---------	---------	---------	--------------	-------------------------------	----------------------	------------------	---------------

240 V, 50 Hz

2x5	TC-S	G23	180	LN 13.413	164342	240, 50	85	75	34	0.32	60/85	B2	2.0	70
7	TC-S	G23	175	L7/9/11.411	164335	240, 50	85	75	34	0.32	60/85	B2	2.0	50
13	TC-D/TC-T	G24d-1/GX24d-1	175	LN 13.413	164342	240, 50	85	75	34	0.32	60/90	B1	2.0	100
18	TC-D/TC-T	G24d-2/GX24d-2	220	LN 18l.418	164353	240, 50	85	75	34	0.28	60/160	B1	2.0	110

220 V, 60 Hz

5	TC-S	G23	180	L7/9/11.207	163305	220, 60	85	75	34	0.32	35/65	-	2.0	70
13	TC-D/TC-T	G24d-1/GX24d-1	165	L 13.210	520992	220, 60	85	75	34	0.32	45/80	-	2.0	110

15 - 75 W, 240/220 V

shape: 28 x 41 mm

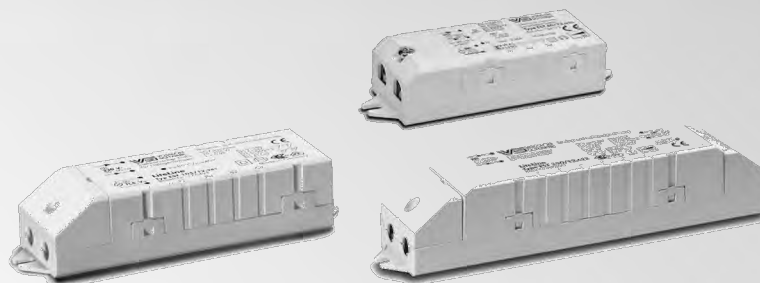
18/20	T-U	2G13	370	L 18.936 L 18.933	534627 534628	240, 50	150	140	45	0.43	70/140	B2	4.5	120
36/40	T8 (T26)/ T12 (T38)	G13	430	L 36.124	534292 534584	240, 50	150	140	60	0.55	55/140	B2	4.5	210
58/65	T8 (T26)/ T12 (T38)	G13	670	LN 58.722	534252 547701	240, 50	190	180	92	0.80	60/180	B2	7.0	320
36/40	T8 (T26)/ T12 (T38)	G13	430	L36.124	534292.08 534584.08	240, 50	150	140	45	0.43	65	-	4.5	210

220 V, 60 Hz

18/20	T8 (T26)/ T12 (T38)	G13	370	L 18.121	532149 528582 529438	220, 60	1101 50	100 140	45 45	0.42 0.43	65/145	-	4.0	190
36/40	T8 (T26)/ T12 (T38)	G13	400	L 36.120	509373 529453	220, 60	150	140	45	0.43	60/170	-	4.0	220
58/65	T8 (T26)/ T12 (T38)	G13	670	L 58.657	164870 529442	220, 60	195	180	92	0.80	55/140	-	6.0	320

black coloured = push-type terminal

blue coloured = screw-type terminal



Type	Ref. No.	Capacity range (W)	Voltage (V) prim. (±10%)	sec.	Nominal current A	Ambient temperature t _a (°C)	Casing temperature t _c (°C)	Weight g
------	----------	--------------------	--------------------------	------	-------------------	---	--	----------

Dimensions: 22x36x103.5 mm

EST 60/12.635	186173	10-60	220-240	10.2-12	0.258-0.260	-20 to 45	max. 85	70
---------------	---------------	-------	---------	---------	-------------	-----------	---------	----

Dimensions: 28x37x128 mm

EST 35/12.650	186081	5-35	230-240	11.4-11.8	0.152-0.158	-20 to 60	max. 70	80
EST 70/12.380	186072	20-70	230-240	11.3-11.7	0.30-0.31	-20 to 45	max. 70	85
EST 105/12.381	186077	20-105	230-240	11.2-11.7	0.435-0.445	-20 to 40	max. 85	95

Dimensions: 33x37x185 mm

EST 150/12.622	186098	50-150	230-240	11.2-11.6	0.595-0.605	-20 to 45	max. 85	175
----------------	---------------	--------	---------	-----------	-------------	-----------	---------	-----

Super-thin Electromagnetic Built-in Transformers



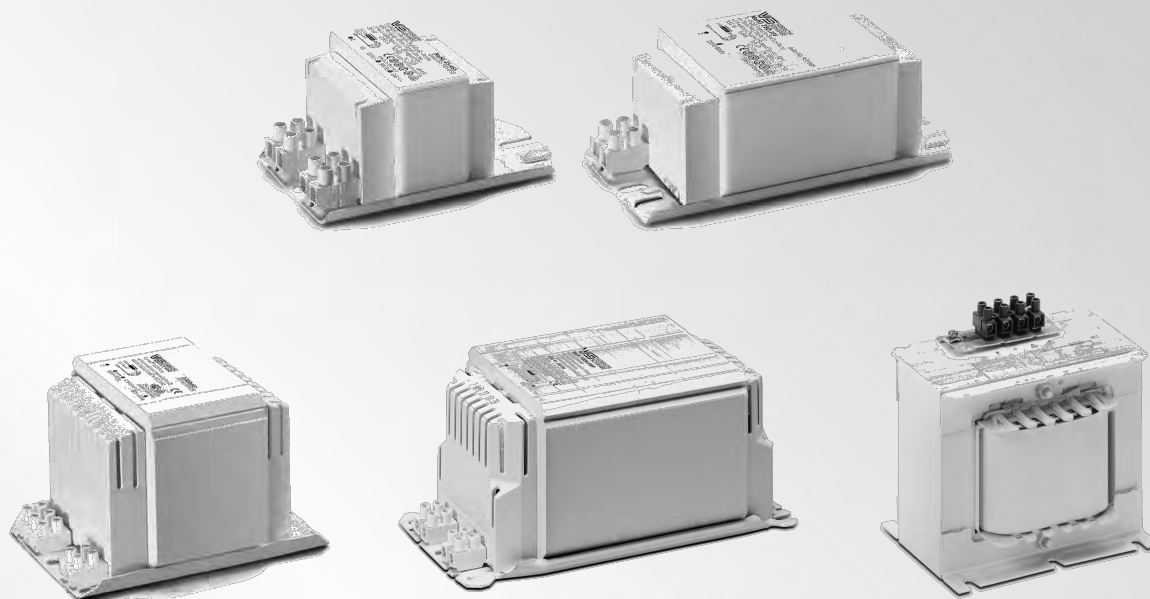
Type	Ref. No.	Capacity range (W)	50,60 Hz V prim. V sec.	Ambient temperature T _a (°C)	A mm	B mm	C mm	Weight kg	AT
------	----------	--------------------	---------------------------	---	------	------	------	-----------	----

220 V/50, 60 Hz

STr 50/12.207	500843	35-50	220 11.5	40/B	175	165	83	0.73	0.250
---------------	---------------	-------	------------	------	-----	-----	----	------	-------

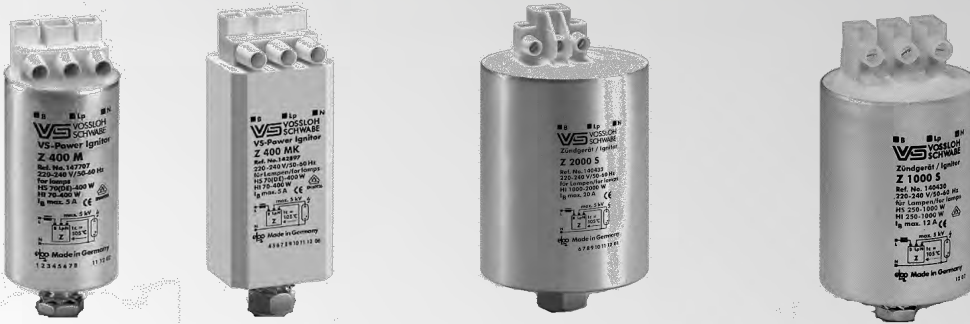
240 V/50, 60 Hz

STr 50/12.422	502592	35-50	220 11.5	40/B	175	165	83	0.73	0.250
---------------	---------------	-------	------------	------	-----	-----	----	------	-------



Lamps			Ballast						Capacitor	
Output W	Type	Current A	Type	Ref. No.	Voltage AC V, Hz	Weight kg	Δt K	Power factor λ	CP μF	IN A
35	HS, HI	0.53	NaHJ 35.485	526517	220/230, 50	0.91	60	0.40	6	0.22/0.21
35	HS, HI	0.53	NaHJ 35.485	161367	230/240, 50	0.91	60	0.40	6	0.22/0.21
35	HS, HI	0.53	NaHJ 35.485	161371	220, 60	0.91	50	0.41	5	0.23
70	HS, HI	0.98	NaHJ 70.128	539434	230/240, 50	1.07	70/75	0.36	12	0.38/0.37
70	HS, HI	0.98	NaHJ 70.128	538407	240, 50	1.07	75	0.37	12	0.37
70	HS, HI	0.98	NaHJ 70.653	161392	220, 60	1.07	60	0.42	10	0.40
100	HS, HI	0.98	NaHJ 70.300	174961	220, 50	1.07	75	0.40	12	0.40
100	HS, HI	1.20	NaHJ 100.126	507671	220,50	1.24	75	0.44	12	0.55
150	HS, HI	1.80	NaHJ 150.620	534540	240, 50	1.80	75	0.40	20	0.74
150	HS, HI	1.80	NaHJ 150.679	526196	220, 60	1.55	75	0.44	16	0.80
150	Hs; hi	1:80	NaHJ 150.159	533602	220, 50	1.80	75	0.41	20	0.80
250	HS, HI	3.00	NaHJ 250.204	529087	220, 50	2.50	80	0.42	32	1.32
250	HS, HI	3.00	NaHJ 250.340	178177	240, 50	2.84	80	0.39	32	1.21
250	HS, HI	3.00	NaHJ 250.163	160604	220, 60	2.50	70	0.42	25	1.35
400	HS, HI	4.45	NaHJ 400.743	536143	240, 50	4.1	75	0.40	45	1.85
400	HS, HI	4.45	NaHJ 400.744	536144	220, 60	4.1	70	0.44	40	2.05
400	HS, HI	4.45	NaHJ 400.743	536142	220, 50	4.1	70	0.45	45	2.10
1000	HS HI	10.30 9.50	NaHJ 1000.089	536140	240, 50	8.90	85	0.42 0.46	100 85	4.8 4.9
1000	HS HI	10.30 9.50	NaHJ 1000.089	528536	220, 60	8.90	75 60	0.42 0.50	100 85	5.1 5.0
2000	HI	8.80	J 2000.44	531007	380/400, 50	13.7	75	0.62	37	6
2000	HI	8.8	J 2000.35	531010	380/400/415,50	14.0	75	0.58	37	6
2000	HI	10.3/11.3	JD 2000.36	531011	380/400/415,50	17.5	80	0.50	60	6
2000	HI	10.3/11.3	JD 2000.58	531465	380, 60	14.0	70	0.53	60	6

Ignitors for HS



Type	Ref. No.	Voltage AC 50-60 Hz V	Max. lamp current A	Internal loss W	Inherent heating K	Ignition voltage kV	Load capacity pF	Switch-off time sec./Hz	Weight g
------	----------	-----------------------------	---------------------------	-----------------------	--------------------------	---------------------------	------------------------	-------------------------------	-------------

Aluminium casing (Al) with screw terminals: 0.75-4 mm²

Z 400 M VS-Power	147707	220 - 240	5	< 3	< 35	4 - 5	20 - 50	-	140
------------------	--------	-----------	---	-----	------	-------	---------	---	-----

Plastic casing (PC) with screw terminals: 0.75-4 mm²

Z 400 M K VS-Power	142897	220 - 240	5	< 3	< 35	4 - 5	20 - 50	-	130
--------------------	--------	-----------	---	-----	------	-------	---------	---	-----

Aluminium casing (Al)

Z 1000 S	140430	220 - 240	12	< 6	< 35	4 - 5	20 - 100	-	340
Z 2000 S	140432	220 - 240	20	< 6	< 30	4 - 5	20 - 100	-	640
Z 2000 S / 400 V	140497	380 - 415	12	< 5	< 32	4 - 5	20 - 2000	-	340
Z 3500 S / 400 V	140499	380 - 415	20	< 7	< 35	4 - 5	20 - 100	-	650

Parallel Capacitor with Break-Action Mechanism



further details upon on request

Lampholders for Discharge Lamps



further details upon on request

Lamps

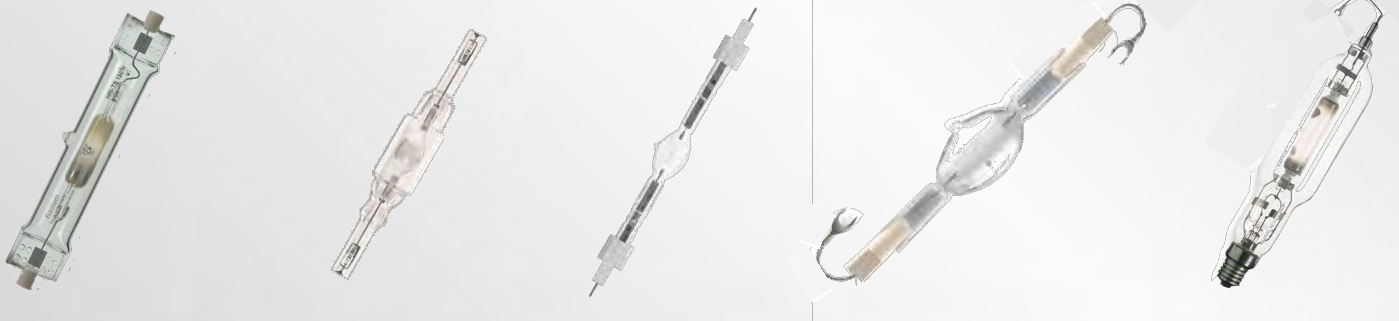
Halogen



Fluorescent



High Pressure (Metal Halide, Sodium, Mercury)



Radium



NARVA

OSRAM



SYLVANIA

PHILIPS

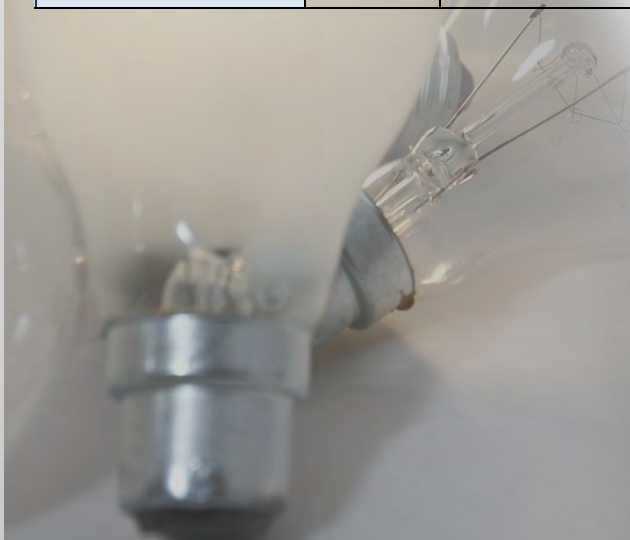
KISTENMACHER general lighting service (GLS) lamps.

These lamps are available on different versions from 127V-240V.

Incandescent Lamps (lifetime abt. 1000 hrs.):



Art-No.	Output	Bulb Finish	Light Output (approx.)	Diameter	Base	Packing (pcs. / carton)
EGK G040W CL	40W	Clear	300 lm	60 mm	B22 / E27	100 pcs.
EGK G040W FR	40W	Frosted	290 lm	60 mm	B22 / E27	100 pcs.
EGK G060W CL	60W	Clear	530 lm	60 mm	B22 / E27	100 pcs.
EGK G060W FR	60W	Frosted	520 lm	60 mm	B22 / E27	100 pcs.
EGK G075W CL	75W	Clear	800 lm	60 mm	B22 / E27	100 pcs.
EGK G075W FR	75W	Frosted	780 lm	60 mm	B22 / E27	100 pcs.
EGK G100W CL	100W	Clear	1090 lm	60 mm	B22 / E27	100 pcs.
EGK G100W FR	100W	Frosted	1070 lm	60 mm	B22 / E27	100 pcs.
EGK G150W CL	150W	Clear	1800 lm	75 mm	B22 / E27	50 pcs.
EGK G150W FR	150W	Frosted	1780 lm	75 mm	B22 / E27	50 pcs.
EGK G200W CL	200W	Clear	2600 lm	75 mm	B22 / E27	50 pcs.
EGK G200W FR	200W	Frosted	2560 lm	75 mm	B22 / E27	50 pcs.



Fluorescent Tubular Lamps

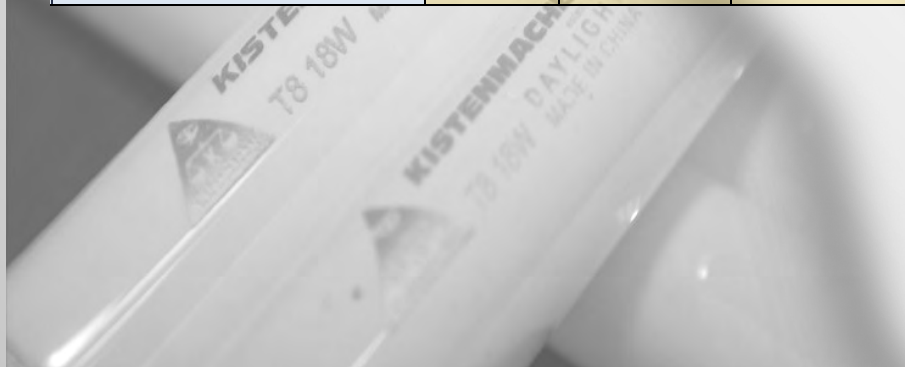
Over many years **KISTENMACHER** standard fluorescent tubes have gained an excellent reputation for quality and durability with our customers throughout the Middle East.

The lamps are available in all standard light colours and are suitable for a wide range of luminaires.

T8 Standard Colours (26 mm diameter - lifetime abt. 8000 hrs.):



Art-No.	Output	Colour Temperature	Light Colour	Rendering Index	Base	Packing (pcs. / carton)
EGK TLD 10W/Incandescent	10W	2700K	Incandescent	70 R _a	G13	25 pcs.
EGK TLD 10W/Warmwhite	10W	3000K	Warm White	70 R _a	G13	25 pcs.
EGK TLD 10W/Coolwhite	10W	4000K	Cool White	70 R _a	G13	25 pcs.
EGK TLD 10W/Daylight	10W	6500K	Daylight	70 R _a	G13	25 pcs.
EGK TLD 15W/Incandescent	15W	2700K	Incandescent	70 R _a	G13	25 pcs.
EGK TLD 15W/Warmwhite	15W	3000K	Warm White	70 R _a	G13	25 pcs.
EGK TLD 15W/Coolwhite	15W	4000K	Cool White	70 R _a	G13	25 pcs.
EGK TLD 15W/Daylight	15W	6500K	Daylight	70 R _a	G13	25 pcs.
EGK TLD 18W/Incandescent	18W	2700K	Incandescent	70 R _a	G13	25 pcs.
EGK TLD 18W/Warmwhite	18W	3000K	Warm White	70 R _a	G13	25 pcs.
EGK TLD 18W/Coolwhite	18W	4000K	Cool White	70 R _a	G13	25 pcs.
EGK TLD 18W/Daylight	18W	6500K	Daylight	70 R _a	G13	25 pcs.
EGK TLD 18W/SuperDaylight	18W	12000K	SuperDaylight	70 R _a	G13	25 pcs.
EGK TLD 36W/Incandescent	36W	2700K	Incandescent	70 R _a	G13	25 pcs.
EGK TLD 36W/Warmwhite	36W	3000K	Warm White	70 R _a	G13	25 pcs.
EGK TLD 36W/Coolwhite	36W	4000K	Cool White	70 R _a	G13	25 pcs.
EGK TLD 36W/Daylight	36W	6500K	Daylight	70 R _a	G13	25 pcs.
EGK TLD 36W/SuperDaylight	36W	12000K	SuperDaylight	70 R _a	G13	25 pcs.



Over many years **KISTENMACHER** standard fluorescent tubes have gained an excellent reputation for quality and durability with our customers throughout the Middle East.

These lamps provide lighting in four different colour tones which makes the lamps ideally suitable for decoration in domestic and professional applications.

T8 Coloured Lamps (26 mm diameter - lifetime abt. 8000 hrs.):



Art-No.	Output	Colour Method	Light Colour	Base	Packing (pcs. / carton)
EGK TLD18W/Red	18W	coloured fluorescent powder	Red	G13	25 pcs.
EGK TLD18W/Blue	18W		Blue	G13	25 pcs.
EGK TLD18W/Green	18W		Green	G13	25 pcs.
EGK TLD18W/Yellow	18W		Yellow	G13	25 pcs.
EGK TLD 36W/Red	36W		Red	G13	25 pcs.
EGK TLD 36W/Blue	36W		Blue	G13	25 pcs.
EGK TLD 36W/Green	36W		Green	G13	25 pcs.
EGK TLD 36W/Yellow	36W		Yellow	G13	25 pcs.
EGK TLD 36W/Tri-color	36W		B / R / G	G13	25 pcs.
EGK TLD18W/Red	18W	coloured glass	Red	G13	25 pcs.
EGK TLD18W/Blue	18W		Blue	G13	25 pcs.
EGK TLD18W/Green	18W		Green	G13	25 pcs.
EGK TLD18W/Yellow	18W		Yellow	G13	25 pcs.
EGK TLD 36W/Red	36W		Red	G13	25 pcs.
EGK TLD 36W/Blue	36W		Blue	G13	25 pcs.
EGK TLD 36W/Green	36W		Green	G13	25 pcs.
EGK TLD 36W/Yellow	36W		Yellow	G13	25 pcs.

T8 UV Blacklight Blue Lamps (26 mm diameter - lifetime abt. 6000 hrs.):

Art-No.	Output	Wave Length	Light Colour	Base	Packing (pcs. / carton)
EGK TLD18W/BLB	18W	365 nm peak	UV BLB	G13	25 pcs.
EGK TLD36W/BLB	36W	365 nm peak	UV BLB	G13	25 pcs.



Safety Inspection lamp

- the inexpensive quality inspection lamp
- with impact resistant, flexible basket
- with protective glass cover
- supplied with Schuko or BS plug
- delivery without bulbs

Art. No.	Cable	Length	Output	Socket	Plug
1 17602 6	H05VV-F 2x0,75	5 mtr	60 watt	E 27	Schuko
1 17601 3	H05VV-F 2x0,75	5 mtr	60 watt	E 27	BS



Rubber Hand Lamp

- the approved, robust inspection lamp
- wire basket with caps
- with protective glass cover
- handle made of high quality hard rubber for comfort when in constant use
- supplied with Schuko or BS plug
- delivery without bulbs

Art. No.	Cable	Length	Output	Socket	Plug
1176766	H05RN-F 2x0,75	5 mtr	60 watt	E 27	Schuko
1176816	H05RN-F 2x0,75	10 mtr	60 watt	E 27	Schuko
1176783	H05VV-F 2x0,75	5 mtr	60 watt	E 27	BS
1176813	H05VV-F 2x0,75	10 mtr	60 watt	E 27	BS



Rubber Hand Lamp IP 54

- robust, handy inspection lamp with ergonomic handle
- hexagonal handle, prevents rolling away
- stable, galvanised wire basket for heavy use
- with protective glass cover and anti-dazzle screen
- delivery without bulbs

Art. No.	Cable	Length	Output	Socket	Plug
1 17692 0	H07RN-F 2x1,0	5 mtr	100 watt	E 27	Schuko



Ex-Proof Rubber Hand Lamp IPX 5

- robust, handy inspection lamp with ergonomic handle
- hexagonal handle, prevents rolling away
- stable, galvanised wire basket for heavy use
- with protective glass cover and anti-dazzle screen
- delivery without cable and bulbs

Art. No.	Output	Socket
439/GK	60 watt	E 27



Griplight

- gripper handle made from top quality plastic, adjustable opening
- special clamping jaws on an axial bearing with an adjustable clamp setting
- wire basket with caps
- with protective glass cover
- delivery without bulbs

Art. No.	Cable	Length	Output	Socket	Plug
1 17611 3	H05VV-F 2x0,75	5 mtr	60 watt	E 27	BS



Inspection Lamp

- robust and impact-resistant
- ergonomically designed handle
- with electronic ballast in the handle
- hexagonal handle, prevents rolling away
- with large rotating hanging hook
- supplied with Schuko or BS plug
- including lamp
- with or without ON/OFF switch or BS plug

Art. No.	Cable	Length	Output	Socket	Plug
1 17711 0	H05RN-F 2x0,75	5 mtr	8 watt	E 27	Schuko
1 17723 0 with switch	H05VV-F 2x0,75	5 mtr	8 watt	E 27	Schuko
1 17710 3	H05VV-F 2x0,75	5 mtr	8 watt	E 27	BS

LED Lamps

brennenstuhl®

LED Head-Light HL 10

practical and adjustable headlight



Art. No.	LED
1 17977 0	10 pieces

- focus angle can be adjusted
- with 10 ultra bright LEDs
- luminous flux appr. 30 lm
- pushbutton ON/OFF switch
- included 3 standard batteries AAA

LED Head-Light HL 2in1

can be used as a forehead lamp and bicycle lamp



Art. No.	LED
1 17986 0	1 watt

- 1 watt LED with high lumiance
- robust ABS housing
- 3 switching levels and flashing function
- with headband and handlebar attachment
- included 3 standard batteries AAA



28 LED rechargeable Hand Lamp



28 LED

Art. No.	LED	Measure	Plug
1175340	28	25x6x5cm	Schuko
1175343	28	25x6x5cm	BS

- 28 extra-bright LEDs with special optics
- equivalent to appr. 40W incandescent bulb
- appr. 4-5 hours constant use
- NiMH rechargeable battery and power supply included
- rubber-clad housing
- 360° hanging hook and magnet facility
- ON/OFF switch

30 LED Battery DL 30 portable lamp with dynamo



30 LED

Art. No.	LED	Measure	Plug
1178570	28	30x6x4cm	Schuko
1178573	28	30x6x4cm	BS

- light at all times, also without battery
- option to charge the battery with integrated dynamo
- 30 light intensity LED's, reversible to 6 or 30 LED's
- 360° adjustable hook and magnet
- incl. 230 V and 12 V charger for car cigarette lighter
- ON / OFF switch



1x1 W

LuxPrimera LED 100

- with high performance 1 watt Power LED
- elegant robust aluminium housing with wrist strap
- American style ON/OFF switch at the end of the torch
- dust-tight and protected against water-jets IP 65

Art. No.	Packing	LEDs	Battery	Length
1178700	B blister	1x1 W	1xAA	10,5 cm
1178706	B blister	1x1 W	without	10,5 cm



1x3 W

LuxPrimera LED 120

- with high performance 3 watt Power LED
- elegant robust aluminium housing with wrist strap
- 2 different settings and flashing functions
- American style ON/OFF switch at the end of the torch
- dust-tight and protected against water-jets IP 65

Art. No.	Packing	LEDs	Battery	Length
1178710	B blister	1x3 W	3xAAA	12 cm
1178716	B blister	1x3 W	without	12 cm

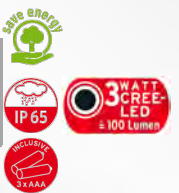


1x3 W

LuxPrimera LED 140

- with high performance 3 watt Power LED
- elegant robust aluminium housing with wrist strap
- 2 different settings and flashing functions
- American style ON/OFF switch at the end of the torch
- dust-tight and protected against water-jets IP 65

Art. No.	Packing	LEDs	Battery	Length
1178720	B blister	1x3 W	3xAAA	14 cm
1178726	B blister	1x3 W	without	14 cm



1x1 W

LuxPrimera LED 145 Multicolour

- with high performance 1 Watt LED
- 3 different settings: white-red-green
- ON/OFF switch with soft-touch-function
- elegant, robust aluminium housing with wrist strap
- dust-tight and protected against splashing water IP 64

Art. No.	Packing	LEDs	Battery	Length
1178730	B blister	1x1 W	3xAAA	15 cm
1178736	B blister	1x1 W	without	15 cm



Solar Technology

brennenstuhl®

180°
12 mtr


Solar LED Light SOL 80 IP 44

practical and suitable for outside use, IP 44

- solar lamp with motion detector and separat solar module
- pivoting solar lamp
- pivoting infrared motion detector with max. 180° detection angle and max range of 12mtr
- switch-on time adjustable to a max. of appx 1 minute
- can operate independent of the mains
- response intensity adjustable by a twilight switch
- sensivity adjustable
- 80 bright LEDs for illumination of large areas
- inclusive of lead-gel battery
- with integrated over-charge and total discharge protection
- operating time of appx 120 minutes with fully loaded rechargeable battery

Art. No.	LEDs	Luminous flux	Cable lenght	Colour
1 17071 0	80	appr. 200 lm	4,75 mtr.	grey white
1 17081 0	80	appr. 200 lm	4,75 mtr.	black

Motion Detectors


180°
12 mtr
110°
12 mtr


Infrared Motion Detector PIR 180/110 IP 44

automatically switches lamps on and off (incandescent, Halogen and energy-saving bulbs) when someone enters the detection zone

- for indoor and outdoor use, IP 44
- detection angle 180° or 110°, range 12 mtr
- switch-on time adjustable from appx 10 seconds up to appx 4 min.
- response brightness adjustable
- switching capacity max. 1000 Watt (bulbs) or max. 300Watt (energy-saving lamp)
- adjustable vertically and horizontally

Art. No.	UP	Angle	Voltage
1 17090 0	1 piece	180°	230 V
1 17089 0	1 piece	110°	230 V


240°
12 mtr


Infrared Motion Detector PIR 240 IP 44

automatically switches lamps on and off (incandescent, Halogen and energy-saving bulbs) when someone enters the detection zone

- for indoor and outdoor use, IP 44
- detection angle 240, range 12 mtr
- switch-on time adjustable from appx 10 seconds up to appx 4 min.
- response brightness adjustable from 10 to 150 Lux
- switching capacity max. 1000 Watt (bulbs) or max. 300Watt (energy-saving lamp)
- adjustable vertically and horizontally
- with corner brackets

Art. No.	UP	Angle	Voltage
1 17091 0	1 piece	240°	230 V

Garden Spotlights with ground spike



- IP 55, E27, max. 100 W
- 2,50m rubber cable with schuko plug
- ANTI-UV and ANTI-CORROSION material
- caustic substance resistant
- adverse weather conditions resistant
- suitable for every climatic zone
- not fading color
- low cost of maintenance
- silicon gasket
- ceramic lampholder
- stainless steel screws
- individually packed in polybags
- delivery without bulbs

Applications: Garden, Promenade, Shopping Gallery e.g.

Art. No.	Spotlights	Dimension	Plug
PAR 38 1/P	1 piece	240 x 500 mm	Schuko
PAR 38 2/P	2 pieces	480 x 500 mm	Schuko



Wall Fixed Spotlights with installation base



- IP 55, E27, max. 100 W
- ANTI-UV and ANTI-CORROSION material
- caustic substance resistant
- adverse weather conditions resistant
- suitable for every climatic zone
- not fading color
- low cost of maintenance
- silicon gasket
- ceramic lampholder
- stainless steel screws
- individually packed in polybags
- delivery without bulbs

Applications: Garden, Balcony, Porch, Promenade, Shopping Gallery e.g.

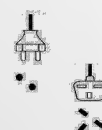
Art. No.	Spotlights	Dimension
PAR 38 1/M	1 piece	240 x 230 mm
PAR 38 2/M	2 pieces	380 x 200 mm

Double Socket Outlet with ground spike

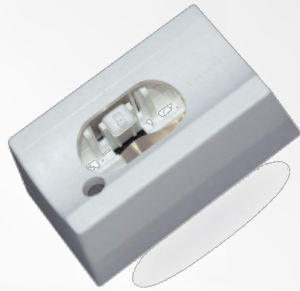


- IP 55
- 2,50m rubber cable
- ANTI-UV and ANTI-CORROSION material
- caustic substance resistant
- adverse weather conditions resistant
- suitable for every climatic zone
- not fading color
- low cost of maintenance
- stainless steel screws

Art. No.	Dimension	Socket / Plug
PAR PRESA Schuko	110 x 380 mm	Schuko
PAR PRESA BS	110 x 380 mm	BS



Single-Lamp Holder

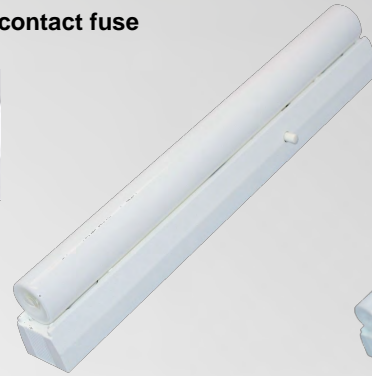


0607/1

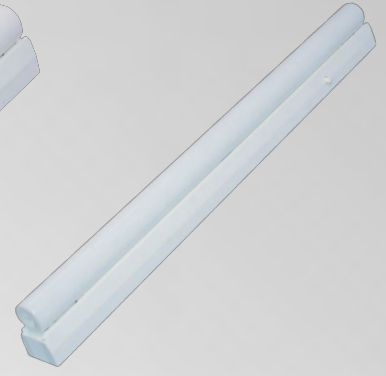
Set with press switch and contact fuse



0610 K / D / 1



0611 K / D / 1



0656 K / D /

Art. No.	Watt	Length tube	Dimension	Fitting
0607 / 1	35 / 60 / 120 W	-	67 x 36 x 39 mm	Plastic
0610 K / D / 1	35 W	300 mm	308 x 37 x 55 mm	Plastic
0611 K / D / 1	60 W	500 mm	508 x 37 x 55 mm	Plastic
0656 K / D	120 W	1000 mm	1008 x 37 x 29 mm	Aluminium

Ralina Serie




RaLEDina, double based, opalised



single based



double based

Art. No.	Watt	Lumious	Dimension	Base
1) 423 18741	6	250	30 x 300 mm	S14s
1) 423 14756	9	450	30 x 500 mm	S14s
2) 127 01614 *	35	270	30 x 300 mm	S14d
2) 127 02408 *	60	420	30 x 500 mm	S14d
3) 127 00309 *	35	270	30 x 300 mm	S14s
3) 127 00207 *	60	420	30 x 500 mm	S14s
3) 127 00514 *	120	840	30 x 1000 mm	S14s

* also available in 120, 130 and 240V



SONLUX Bulkhead Fitting Oval with plastic cage

Protection class: II

Ceiling and wall mounting, body plastic, protective cage plastic with screw fastening, cover crystal glass (clear, inner prismatic structure), 3 cable entries (one with a spout), PU 4 pieces

Art. No.	Watt / V	IP	Socket	Size	Pieces / Carton
52-1032-0082	60 W / 250 V	IP 44	E 27	178x122x112 mm	12 pieces



SONLUX Bulkhead Fitting Oval with plastic cage

Protection class: II

Ceiling and wall mounting, body plastic, protective cage plastic with screw fastening, cover crystal glass (clear, inner prismatic structure), 5 cable entries (one with a spout), PU 4 pieces

Available colours:

-0001 = black, -0002 = gray, -0003 = red, -0005 = white, -0006 = blue, -0014 = silver-grey

Art. No.	Watt / V	IP	Socket	Size	Pieces / Carton
57-1005-5702	60 W / 250 V	IP 44	E 27	178x122x112 mm	4 pieces



SONLUX Bulkhead Fitting Oval with metal cage

Protection class: II

Ceiling and wall mounting, body plastic, protective cage steel wire (galvanized or coated grey) with screw fastening, cover crystal glass (clear, inner prismatic structure), 5 cable entries (one with a spout), PU 4 pieces

Available colours:

-00V1 = galvanized / black, -00V2 = galvanized / grey, -00V5 = galvanized / white,

Art. No.	Watt / V	IP	Socket	Size	Pieces / Carton
57-1000-57V2	60 W / 250 V	IP 44	E 27	176x122x110 mm	4 pieces



SONLUX Bulkhead Fitting Oval with metal clip system

Protection class: II

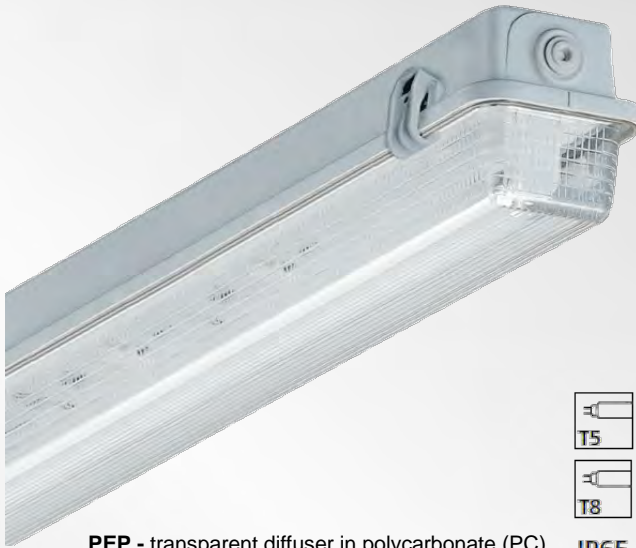
Ceiling and wall mounting, body plastic, protective cage steel wire (metal clip system, galvanized), cover crystal glass (clear, inner prismatic structure), 5 cable entries (one with a spout), PU 4 pieces

Available colours:

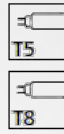
-0001 = black, -0002 = grey, -0005 = white

Art. No.	Watt / V	IP	Socket	Size	Pieces / Carton
57-1002-5702	60 W / 250 V	IP 44	E 27	176x122x110 mm	4 pieces

PEP / PEM



PEP - transparent diffuser in polycarbonate (PC)



IP65



PEM - acrylic diffuser (SAN)

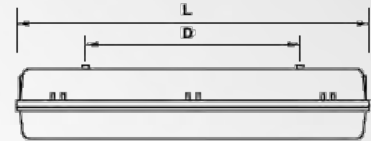
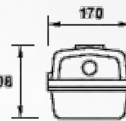
Housing in compressed glass fibre reinforced polyester in grey (RAL 7035). Polyurethane gasket to guarantee an IP65 rating.

PEP - transparent **diffuser** in polycarbonate (PC) - or **PEM** - acrylic **diffuser** (SAN) -, with UV protection, manufactured in injection with prismatic design for an optimum light distribution.



Gear tray manufactured in white lacquered steel plate.

Plastic **Clips**.



Accessories
Suspension Kit
Art. No. 414551



PEP T5

	Electronic		Electronic
1 x 14 W	10017079	2 x 14 W	10016914
1 x 24 W	10094751	2 x 24 W	10094753
1 x 28 W	10017080	2 x 28 W	10016915
1 x 35 W	10017081	2 x 35 W	10022079
1 x 49 W	10016268	2 x 49 W	10016916
1 x 54 W	10016250	2 x 54 W	10016917
1 x 80 W	10094752	2 x 80 W	10094085


PEM T5

	Electronic		Electronic
1 x 14 W	100944931	2 x 14 W	10015096
1 x 24 W	10094932	2 x 24 W	10015097
1 x 28 W	10094933	2 x 28 W	10015098
1 x 35 W	10051623	2 x 35 W	10015099
1 x 49 W	10020496	2 x 49 W	10015100
1 x 54 W	10094934	2 x 54 W	10015101
1 x 80 W	10015686	2 x 80 W	10015102

PEP T8

	Electronic	High Power Factor	Low Power Factor
1 x 18 W	10012203	10012197	10012193
1 x 36 W	10012233	10007406	10012236
1 x 58 W	10012300	10012293	10012288
1 x 70 W	10094754	10094756	10094755
2 x 18 W	10012362	10012356	10007410
2 x 36 W	10007413	10012402	10012399
2 x 58 W	10014462	10012452	10012449
2 x 70 W	10094757	10094759	10094758

PEM T8

	Electronic	High Power Factor	Low Power Factor
1 x 18 W	10012517	10007415	10012508
1 x 36 W	10012571	10012562	10012555
1 x 58 W	10012623	10012616	10012612
1 x 70 W	10094935	10094937	10094936
2 x 18 W	10012680	10012674	10007419
2 x 36 W	10012737	10012728	10012722
2 x 58 W	10012787	10012778	10012775
2 x 70 W	10094938	10094940	10094939

BAT-N



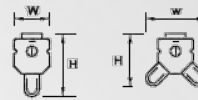
BAT-N T8



IP20



BAT-N T8




Housing in lacquered steel plate in white.


Base in galvanized steel plate where the electrical components are installed, easing the connection and its installation.

Endcaps in polycarbonate in white with UV protection.

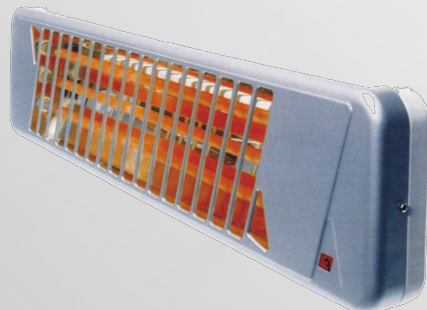
BAT-N T8

	Electronic	High Power Factor	Low Power Factor
1 x 18 W	10039383	10039382	10039381
1 x 36 W	10039388	10039387	10039386
1 x 58 W	10039393	10039392	10039391

BAT-N T8

	Electronic	High Power Factor	Low Power Factor
2 x 18 W	10039398	10039397	10039396
2 x 36 W	10039403	10039402	10039401
2 x 58 W	10039408	10039407	10039406

Quartz Heaters



Quartz Heater with metal front grill and white metal back with IP 24, protection class I, wall mounted, 4 step pull switch, with 1.2 meter length cable H05VV-F grey colour = 3x1.0 sqmm, with BSS plug, packed each in white colour single carton, 4 single cartons in one brown master carton

Art. No.	V	Hz	IP	Heating Steps	Size
HS 1200	220 - 230 V	50 - 60 Hz	IP 24	400W, 800W, 1200W	55 x 14 x 9 mm
HS 1800	220 - 230 V	50 - 60 Hz	IP 24	600W, 1200W, 1800W	55 x 14 x 9 mm



Zenith 5
500W
IP55



Zenith 10
1000W
IP54



Zenith 15
1500W
IP54



MIX R7S
1000 - 1500W
IP54



Plus
250 - 400W
IP55



Lumen
70 - 150W
IP54



Ragio 2
250 - 400W
IP55



Olympia 1
150 - 250W
IP65



Olympia 2
250 - 400W
IP65



Olympia 3
70 - 150W
IP65



Olympia 4
250 - 400W
IP65



Olympia 1000
1000W
IP65



Dakar
1000W
IP65



Daytona
1000-2000W
IP65



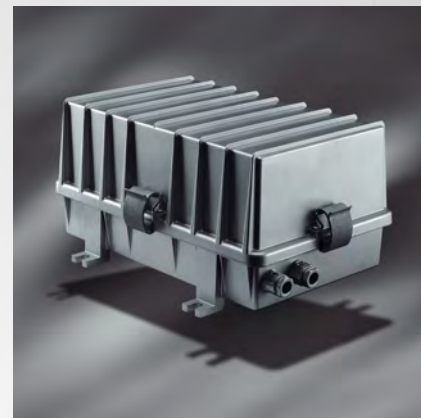
Tolone
1000 - 2000W
IP65



Pilot
1000 - 2000W
IP65



Faro
2000W
IP65



Block
IP65



Habana Ø 450
without glass: IP 23
with glass: IP 65



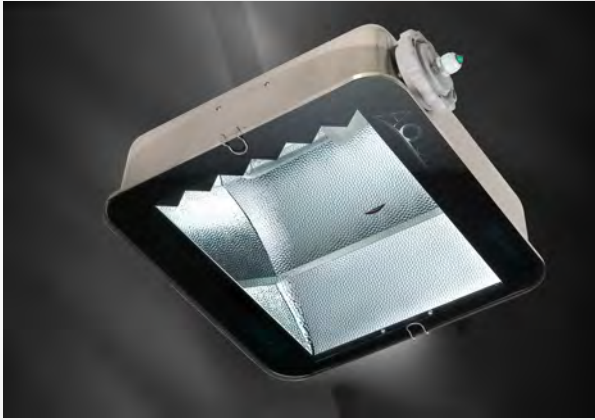
Roma
without glass: IP 23
with glass: IP 65



Cuba 2 Ø 480 SF
without glass: IP 23
with glass: IP 65



Cuba 2 Ø 500
without glass: IP 23
with glass: IP 65



Aqua
70-600W
IP66



Pireo Fluorescent
3 x 55W
4x32/42W
IP66



Pireo High Pressure
250-400W
IP66



Sole
50-150W
P23/54



Monza
45-250W
IP65



Paris 1
70-150W
IP44/66



Paris 2
100-400W
IP44/66



GIO
70W
IP 67



Stella 2
50W
IP 65



Piso
50W
IP 68

KISTENMACHER halogen flood lights for domestic and industrial lighting purposes. In accordance with international standards our fittings have proven to be a reliable lighting solution for many years.

- aluminium die-cast body
- matt finishing (other finish on request)
- with plastic wiring box (nylon wiring box on request)
- available in black and white colour (other colours on request)



Art-No.	Wattage	Dimensions	Lampholder	Colour	Packing (pcs. / carton)
EGK-0500-B-PL	500W	183 x 145 x 120 mm	R7s	black	20 pcs.
EGK-1000-B-PL	1000W	273 x 202 x 136 mm	R7s	black	12 pcs.
EGK-1500-B-PL	1500W	345 x 226 x 168 mm	R7s	black	6 pcs.
EGK-0500-W-PL	500W	183 x 145 x 120 mm	R7s	white	20 pcs.
EGK-1000-W-PL	1000W	273 x 202 x 136 mm	R7s	white	12 pcs.
EGK-1500-W-PL	1500W	345 x 226 x 168 mm	R7s	white	6 pcs.

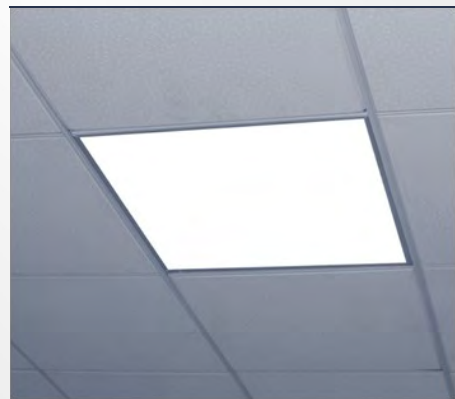


KISTENMACHER premium LED panels are the newest addition to our lighting range. The consequent use of high-grade materials make our LED panels a reliable light source and an excellent alternative to conventional solutions.

Premium LED Lighting Panels:

- Panel can be installed recessed, suspended or surface-mounted (suspended installation kit is an optional accessory)
- Power supply included (100 - 240V - 50/60 Hz.)
- Available as dimmable panel
- Very good uniformity: >95%
- Lifespan: > 40,000 hours, lowest lumen decline

Model	EGK LP595-36	EGK LP1195-36	EGK LP1195-60
Dimensions:	595 x 595 mm	1195 x 295 mm	1195 x 595 mm
Power:	36W	36W	60W
LED Configuration:	468 x Epistar SMD LED 3528	468 x Epistar SMD LED 3528	468 x Epistar SMD LED 3528
Colour Temperature:	3000K, 4500K, 6000K	3000K, 4500K, 6000K	3000K, 4500K, 6000K
Luminous Flux:	2800 lm	2800 lm	4500 lm
CRI	≥ 75	≥ 75	≥ 75
Beam Angle:	120°	120°	120°
Input Voltage:	100-240V AC	100-240V AC	100-240V AC
Working Temperature:	-40~+60°C	-40~+60°C	-40~+60°C
Working Environment:	Indoor	Indoor	Indoor
Material:	Aluminium and PMMA	Aluminium and PMMA	Aluminium and PMMA
Weight:	3.6 kg	3.8 kg	7.0 kg
Pieces per master carton:	6 pieces	6 pieces	3 pieces

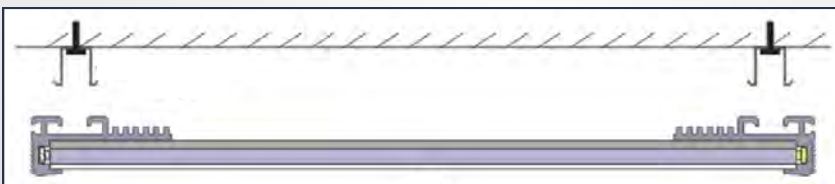


KISTENMACHER decorative LED panels are a great addition to the interior design concepts of shopping malls, offices or even homes. Due to the modular concept a large variety of different areas can be covered and virtually any picture can be displayed.

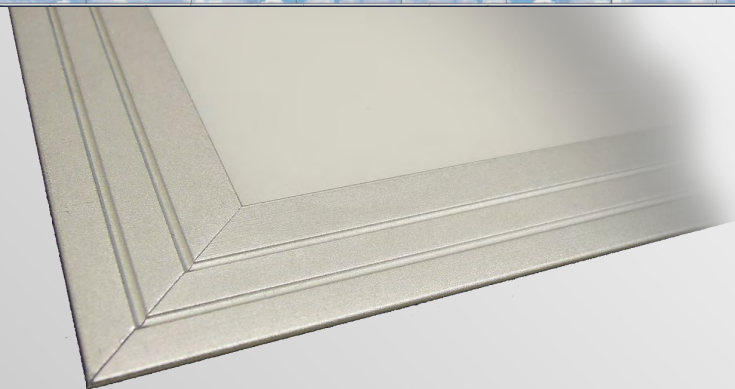
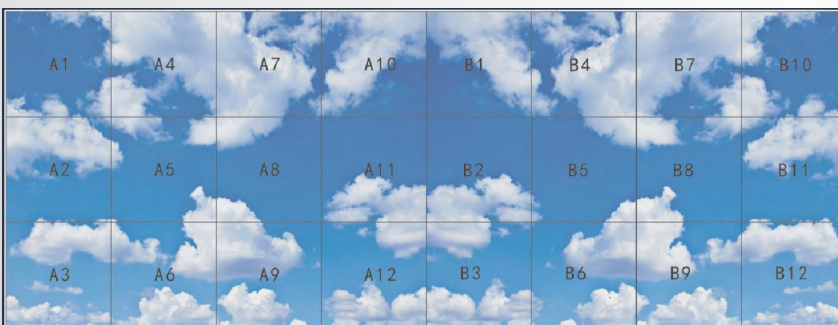
Decorative LED Panels:

- Panel can be installed recessed, suspended or surface mounted, as ceiling or wall installation
- Panels can display any still image according to customer's design
- One display unit comprises nine individual panels (minimum order quantity)

Model	EGK LDP600-18	EGK LDP600-21	EGK LDP1200-36	EGK LDP1200-43
Dimensions:	600 x 600 mm	600 x 600 mm	1200 x 1200 mm	1200 x 1200 mm
Height:	23 mm	23 mm	23 mm	23 mm
Power:	18W	21,6 W	36W	43.2W
Material:	Aluminium, light film and PS	Aluminium, light film and PS	Aluminium, light film and PS	Aluminium, light film and PS
Weight:	5,0 kg	5,0 kg	10,0 kg	10,0 kg
Pieces / master ctn.:	2 pieces	2 pieces	2 pieces	2 pieces



Example of display unit of 24 panels:



PMMA Plastic Globe




Standard Globes, PMMA - blow moulding

without base

colour: clear

Art. No.	Dia.	Neck Type / thread mm
74160 / 40	160 mm	Screw 84,5 mm
74200 / 40	200 mm	Screw 84,5 mm
74250 / 40	250 mm	Screw 84,5 mm
74300 / 40	300 mm	Bayonet 100 mm
74350 / 40	350 mm	Bayonet 150 mm
74400 / 40	400 mm	Bayonet 150 mm
74450 / 40	450 mm	Bayonet 150 mm
74500 / 40	500 mm	Bayonet 150 mm



colour: opal

Art. No.	Dia.	Neck Type / thread mm
74160 / 45	160 mm	Screw 84,5 mm
74200 / 45	200 mm	Screw 84,5 mm
74250 / 45	250 mm	Screw 84,5 mm
74300 / 45	300 mm	Bayonet 100 mm
74350 / 45	350 mm	Bayonet 150 mm
74400 / 45	400 mm	Bayonet 150 mm
74450 / 45	450 mm	Bayonet 150 mm
74500 / 45	500 mm	Bayonet 150 mm

Fittings with holder E27




also available in white



Art. No.	Neck Type / thread mm
1982	Pole 1999



Art. No.	Neck Type / thread mm
1961	Screw 84,5 mm



Art. No.	Neck Type / thread mm
1972	Bayonet 100 mm



Art. No.	Neck Type / thread mm
2049	Screw 84,5 mm

Glass Globe



Glass Globe

without base

colour: opal

Art. No.	dia. / thread mm
GLOBE 150	150 / 84,5 mm