



# INTERIOR CATALOGUE



KAVALANI & SONS W.L.L.

INDUSTRIAL SAFETY FIRE TOOLS HARDWARE ELECTRICAL HVAC AIR CONDITIONING INTERIOR PLUMBING WATERPROOFING METALLURGY CONSTRUCTION PAINTS CERAMIC MATERIALS

## Introduction

Kavalani & Sons is **An ISO 9001:2015 certified**, professionally managed organization, committed to offering complete customer satisfaction. We are Bahrain's most innovative supplier of **Industrial, Construction, Safety, HVAC, Electrical, Plumbing, Waterproofing, Interior and Marine Equipment** and have been in the market for more than 60 Years.

We offer more than 60,000 products from the world's market leading brands under one roof. We strongly believe in innovation and are constantly on the look out to bring innovative products and solutions to the market.

Our quest to introduce new state-of-the-art technologies and products has led to our diversification across different divisions and product lines. Our customers come to us expecting more than just a product, they look out for solutions.

We are pleased to introduce our **INTERIOR PRODUCT CATALOGUE** which brings together all reputed brands with International Standard into one Single Source.

# ONE SOURCE, MANY SOLUTIONS

KAVALANI & SONS W.L.L.



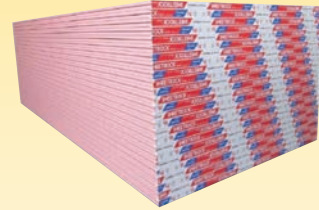
كافالاني و اولادها ش.م.ب.

SUPPLIER OF INDUSTRIAL, CONSTRUCTION AND MARINE EQUIPMENT



- 2** USG BORAL - BOARDS & JOINT FILLERS
- 3** USG BORAL - DRYWALL SYSTEMS
- 4** USG BORAL - CEILING TILES
- 5** USG BORAL - GRID SYSTEMS
- 6** ECOPRO - NON-ASBESTOS FIBRE CEMENT BOARD
- 7** SPARTAN - DRYWALL SYSTEMS & ACCESS PANEL
- 8** SINIAT - PERFORATED GYPSUM SHEET & FILLERS
- 9** UNITED & G BOARD - GYPSUM BOARDS & CEILING TILES
- 10** GYPROC - ACOUSTIC GYPSUM CEILING TILES & ACCESS PANEL
- 11** TECHNOMEC - CEILING TILES & ACCESSORIES
- 12** GRG CEILING TILES & SHEETS
- 13** ROCKWOOL INSULATION
- 14** GLASSWOOL /XPS/EPS INSULATION
- 15** FASTNERS / TAPES / DRILL BITS & HAND TOOLS
- 16** DEWALT - POWER TOOLS
- 17** CEILING LIGHTS & CABLES

The plasterboard pb 9.5,12.7mm, and 15mm is a factory produced, asbestos free, special panel composed of a noncombustible gypsum core is encased in a heavy natural-finish paper on the face side and a strong liner paper on the back side. The face paper is folded around the long edges to reinforce and protect the core, and the ends are square cut and finished smooth. Long edges of panels are recessed (tapered) allowing joints to be reinforced and concealed with a joint treatment



**Gypsum Sheet Regular**

Size: 1200x2400mm  
 Thickness : 9.5/12.5/15mm  
 Product Standard: ASTM C-1396

**Gypsum Sheet Wetstop**

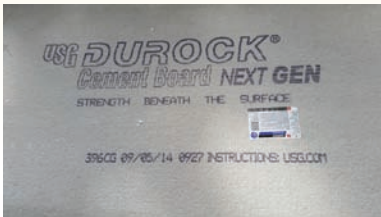
Size: 1200x2400mm  
 Thickness : 9.5/12.5/15mm  
 Product Standard: ASTM C-1396

**Gypsum Sheet Firestop Sheetrock Type X/Type C**

Size: 1200x2400mm  
 Thickness : 9.5/12.7/15.9 mm  
 Product Standard: ASTM C-1396

USG Durock Cement Board represents the most convenient and efficient option for exterior elements of the building such as facades, soffits and curtain walls.

USG Fiberock AR Interior Panels are strong, durable panels made from 95 percent recycled materials and are an economical alternative to cement block and plaster. As they will resist denting, breaking and puncturing, these panels are great in high-traffic areas such as institutional, commercial, and residential interiors.



**Cement Board**

Size: 12.7mm, 15.9mm x1.22mtr x 2.44mtr  
 Product Standard: ASTM C1325

**Fiberock Interior Panels**

Size: 12.7mm, 15.9mm x1.22mtr x 2.44mtr  
 Product Standard: ASTM C1629



**USG Sheetrock Acoustical Sealant**

Packaging 850 ml cartridge, 18.9 L Drum  
 Product Standard: ASTM C834



**USG Boral All Purpose Joint Compound Powder Type**

Packaging: 25kg  
 Product Standard: ASTM C475



**USG Boral Base Coat powder type for cement board**

Packaging :25kg bag  
 Product Standard: ASTM C 472

**USG Boral All Purpose Joint Compound Ready-Mixed**

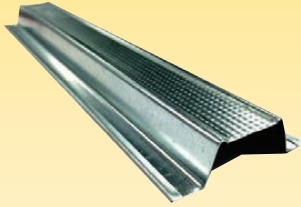
Packaging :5,15, 28 kg  
 Product Standard: ASTM C 475

**USG Boral Base Compound Ready - Mixed for cement board**

Packaging :5,15, 28 kg  
 Product Standard: ASTM C 472



USG BORAL Drywall Suspension System is a concealed framing systems designed to construct regular, fire and acoustic high quality wall board ceilings that offer monolithic appearance and excellent stability. The system is made from materials that comply to ASTM C645 and C527, with a minimum G60 coating or equivalent.



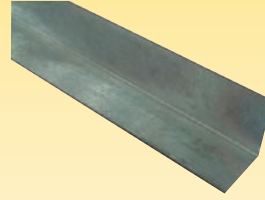
**Furring Channel**

Size: 36 x 22 x 69 x 3mtr long  
Thickness: 0.45-1.50



**Main Channel**

Size: 12 x 38 x 12 x 3mtr long  
Thickness: 0.45-1.50



**Wall Channel**

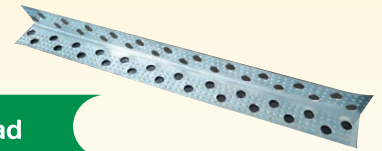
Size: 25 x 25 x 3mtr long  
Thickness: 0.45-1.50



**Wire Clip**

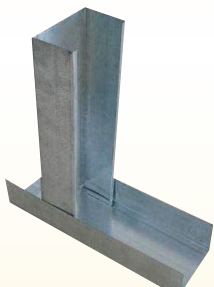
Size: 38mm

**USG BORAL** Lightweight fire steel framing systems provide an economical solution for constructing single, double and multi-layer drywall partitions in commercial, residential and institutional applications. Drywall stud and track channels are roll formed in C & U shapes from materials that comply with ASTM C645 and A653, with a minimum G60 coating or equivalent.



**Corner Bead**

Size: 28 x 28 x 3mtr long  
Thickness: 0.4 mm

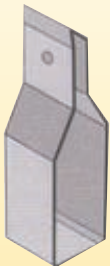


**Track**

Size (mm)	Length	Thickness(mm)
30 x 50 x 30	3 mtr	0.45-1.5
30 x 64 x 30	3 mtr	0.45-1.5
30 x 75 x 30	3 mtr	0.45-1.5
30 x 92 x 30	3 mtr	0.45-1.5
30 x 100 x 30	3 mtr	0.5-1.5
30 x 125 x 30	3 mtr	0.7-1.5
30 x 150 x 30	3 mtr	0.9-1.5

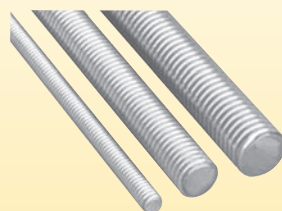
**Stud**

Size (mm)	Length	Thickness (mm)
34 x 48.5 x 36	From 2.4mtr to Maximum asper Design Requirements	0.45-1.5
34 x 62.5 x 36		0.45-1.5
34 x 73.5 x 36		0.45-1.5
34 x 90.5 x 36		0.45-1.5
34 x 98.5 x 36		0.45-1.5
34 x 123.5 x 36		0.45-1.5
34 x 148.5 x 36		0.45-1.5



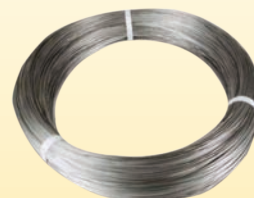
**Main Channel Bracket**

Size: 12 x 38 mm



**Threaded Rod**

Thickness: 6- 12 mm  
Length :1 mtr - 3 mtr



**Wire Hanger**

Thickness: 2.6 mm  
Length :1.8 mtr



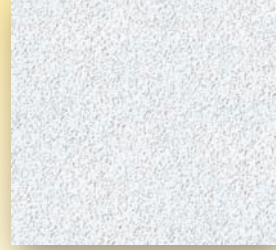
**Adjustable Hanger & Butterfly Clip**

Thickness: 3.5-3.75mm  
Length :250 - 6000 mm

USG Boral is the only manufacturer of Mineral Fiber Tiles in the Middle East and comply with both international standards ASTM E 1264 and En 13964 for ceiling tile manufacturing.

#### Application:-

Schools, Healthcare, Corridors, Lobby areas, Offices, Supermarket, Warehouse, Banks, Libraries, Hotels



#### Cross Fissured

Size: 600 x 600mm / 600 x 1200mm  
Thickness: 15 / 19mm  
Edge : Square/Slit

#### Perforated

Size: 600 x 600mm / 600 x 1200mm  
Thickness: 15 / 19mm  
Edge : Square/Slit / FL

#### Olympia II

Size: 600 x 600mm / 600 x 1200mm  
Thickness: 15 / 19mm  
Edge : Square/Slit / FL

USG Boral Vinyl Ceiling tiles provides a variety of uniquely different designs that adds a beautiful elegance to your space. A reinforced plasterboard core is finished with a very high quality lining that offers a durable face that is easy to clean.

#### Application:-

Hospital, Laboratory, Washroom, Kitchen and Food Preparation Area.



#### Shades

Size: 600 x 600mm / 600 x 1200mm  
Thickness: 9 / 12mm  
Edge : Square/Slit

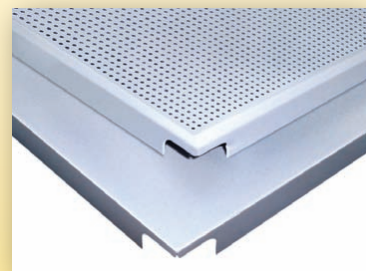
#### Condado

Size: 600 x 600mm / 600 x 1200mm  
Thickness: 9 / 12mm  
Edge : Square/Slit

USG Boral offers wide range of high quality powder coated Aluminum alloy and metal ceiling panels with unlimited design possibilities to increase the aesthetic and functional value of your interiors

#### Application:-

Banks to Corporate offices, Airport to Shopping Malls.



#### Aluminum Plain & Perforated Layin Tile

Size: 600 x 600mm / 600 x 1200mm

#### Aluminum Plain & Perforated Clipin Tile

Size: 600 x 600mm / 600 x 1200mm



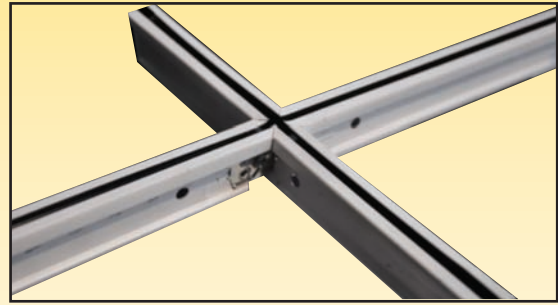
USG BORAL Donn® Brand DX®/DXL™ Acoustical Suspension System is rust resistant and offers appropriate load-carrying capacities for acoustical panels, light fixtures and air distribution elements. The system can be used in both general and fire-rated applications



**Donn DX24/DXL 24/DX15**

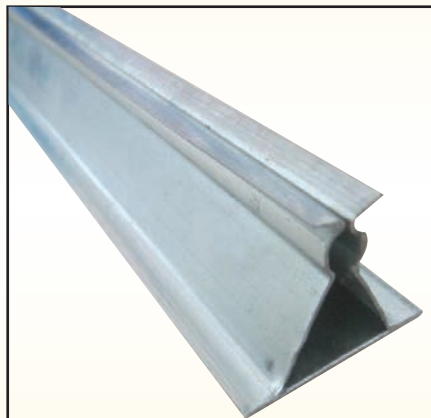
**Intermediate Duty /  
Heavy Duty- Fire Rated  
DX15 Centricitee**

Capping : Pre-Painted Steel  
& Aluminium



**The USG Donn® Brand Finline® 1/8 DXFF™**

Acoustical Suspension System allows for easy ceiling access, while its narrow slotted profile hides the suspension system behind acoustical panels, yielding a smooth, clean ceiling plane with minimal exposed metal.



**Spring Tee**

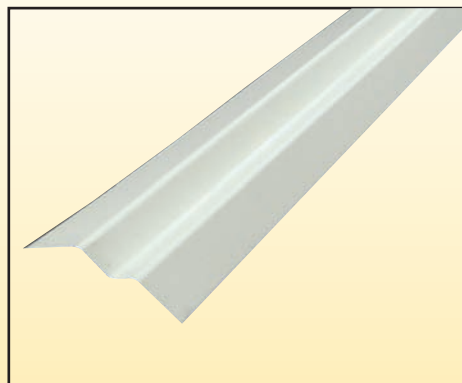
Size: 32x29mm x 3 Mtr



**Wall Angles**

Size: 19x22mm x 3.6 Mtr  
15x22mm x 3.6 Mtr

Available in Pre-Painted Steel & Aluminium



**Shadowline Wall Angles**

Size: 19x9x9x19mm x 3.6 Mtr

Available in Pre-Painted Steel & Aluminium

EcoPro is a wood-free, light weight and asbestos-free alternative to conventional materials. Catering to the changing needs of the construction industry, EcoPro has been developed understanding the demand for quality and improved aesthetics. EcoPro fibre cement boards help in maximizing benefits and minimizing cost. Further, with a host of applications to put in use varied areas, makes it a multi-beneficial, multi-functional, multi-purpose board

### NON-ASBESTOS FIBRE CEMENT BOARD

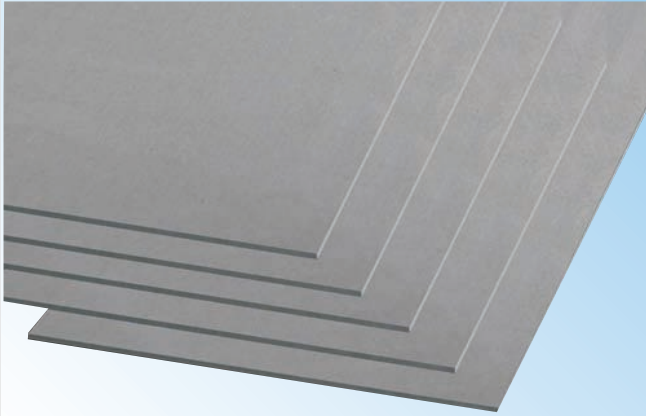
Size: 1200x2400mm/1220x2440mm

Thickness: 5/6/9/12/15/18mm

Edge : Square/ Tapered

#### Features:

- ↕ Moisture-resistant
- ↕ Termite-resistant
- ↕ Fire retardant
- ↕ Dimensionally stable
- ↕ Workable
- ↕ Multi-purpose board
- ↕ No Formaldehyde
- ↕ No Asbestos
- ↕ Up-to 14 LEED points



### NON-ASBESTOS FIBRE CEMENT CEILING TILES

Size: 600mm x 600mm

Thickness: 8mm

#### Features:

- ↕ Stability
- ↕ Damp-proof
- ↕ Heat insulation: Fire retardant



### NON-ASBESTOS FIBRE CEMENT DESIGNER PLANKS

Size: 150mm x 3000 mm/ 4000mm

200mm x 3000mm/ 4000mm

Thickness: 8mm

#### Features:

- ↕ Weather Resistant
- ↕ Immune to water damage
- ↕ Fire retardant
- ↕ Flexible
- ↕ Termite resistant
- ↕ Non-Asbestos





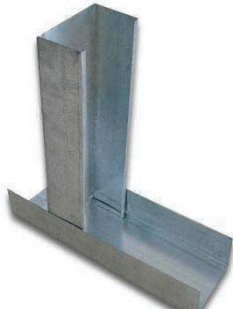
The SPARTAN range of drywall partitions & ceiling is the result of decades of experience in developing, testing and supporting warranted systems that meet the needs of the modern building. Quickly and simply constructed from high-quality spartan components, our partitions & ceiling are guaranteed to perform. You can specify Spartan partitions & ceiling safe in the knowledge that these components have been comprehensively tested together to ensure performance, and that our support extends from concept to site.

		
<p><b>Furring Channel</b></p> <p>Size: 35 x 22 x 69 mm 3mtr long Thickness: 0.45-1.20</p>	<p><b>Main Channel</b></p> <p>Size: 12 x 38 x 12mm x 3mtr long Thickness: 0.45-1.50</p>	<p><b>Wall Channel</b></p> <p>Size: 25 x 25mm x 3mtr long Thickness: 0.45-1.50</p>



**Wire Clip**

Size: 38 mm



**Track**

Size: 25 x 75 x 25 mm 3mtr long  
Thickness: 0.45-1.20



**Corner Bead**

Size: 30 x 30mm x 3mtr long  
Thickness: 0.4 mm

**Stud**

Size: 35 x 73 x 35 mm 3mtr long  
Thickness: 0.45-1.20

**Access Panel**

**Description:**

Avialable in ceiling or drywall maintainance panel.

2mm aluminium profile and strong hardware.

White powder coated finish.

With sealing strips between inner & outer frames.

Concealed snap lock,push open.

12.5mm moisture resitant gypsum inlay.

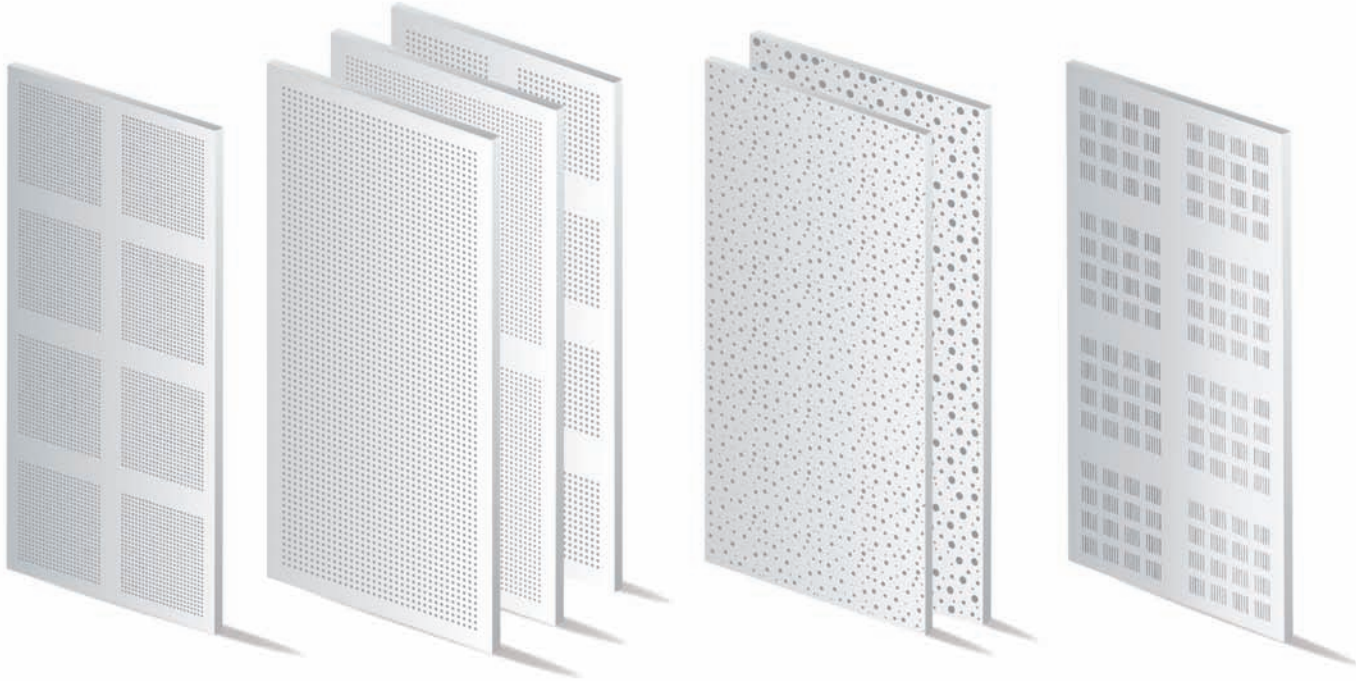
Removable door panel with safety.

Size: 300x300mm/400x400mm/450x450mm/500x500mm/600x600mm  
600x800mm/600x1200mm.

Customized sizes can also be made upon request.



Pregybel is a perforated plasterboard which combines superior sound absorption performance with aesthetic design. Pregybel's perforated design absorbs sound waves helping to deaden reverberant noise improving sound quality and reducing echo in a room or hall. Ideal for open spaces such as apartments, hospitals, schools, retail, auditoriums, cinemas and galleries.


**Pregybel R 8**

Perforation Size : 8mm Round Hole Perforation  
 Size : 1200x2400mm  
 Thickness: 12.5mm  
 Backing: Blackveil

**Pregybel C 8**

Perforation Size : 8x8mm Square Hole Perforation  
 Size : 1200x2400mm  
 Thickness: 12.5mm  
 Backing: Blackveil


**Siniat Joint Compound Powder Type**

Packaging: 25kg  
 Made: France


**Siniat Cornice Glue**

Packaging: 25kg  
 Made: France



United Mining Industries /ASK Gypsum based in Saudi Arabia is a company in Construction and Building Materials Industry in GCC. Formed to Manufacture high-quality Gypsum products for use in local and regional markets and to provide economical product solutions for residential and commercial developments. Our product range includes Gypsum Boards (Regular, Fire Resistant, and Moisture Resistant), Ceiling Tiles, Gypsum Powder, Fiber Cement Board, etc. Our captive raw material source, low energy costs and central location in the Middle East enable us to provide the construction industry with a variety of low cost, high-quality gypsum products virtually on demand.



### Gypsum Sheet Regular

Size: 1200x2400mm

Thickness: 9.5/12.5/15/16/18 mm

Product Standard: ASTM C473



### Gypsum Sheet Moisture Resistant

Size: 1200x2400mm

Thickness: 9.5/12.5/15/16/18mm

Product Standard: ASTM C473



### Gypsum Sheet Fire Resistant

Size: 1200x2400mm

Thickness: 9.5/12.5/15/16/18mm

Product Standard: ASTM C473

## Gypsum Powder

Packaging: 40kg



Vinyl Facing Gypsum Ceiling Tiles are manufactured from premium UMI quality plaster board made from natural crude gypsum which is kind of preferred material of green health, a layer of PVC on surface, aluminum foil on its back, and excellent kind of glue paste. The product is available in various elegant designs suitable for different applications and usages.



### Features

Washable, durable, environmentally friendly, thermal insulation, fire resistant, moisture resistant, noise resistance, sag resistance

### Vinyl Faced Gypsum Ceiling Tiles

Size: 600x600mm

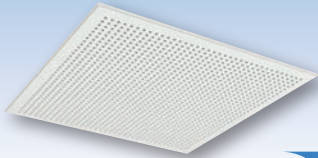
Thickness: 8/9.5/12.5 mm

Product Standard: ASTM C1396

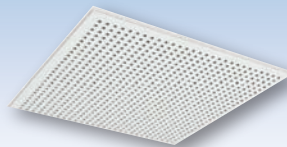
Gyptone tiles are the perfect solution for schools, offices, retail, and other indoor environments looking to combine durability with attractive design and excellent acoustic properties.

By choosing Gyptone tiles, you can comply with even the most stringent requirements for reverberation and speech intelligibility. Furthermore, you get a ceiling that is colour stable and with a durable, easy-to-clean surface – simply wipe with a damp cloth and a mild cleaning agent.

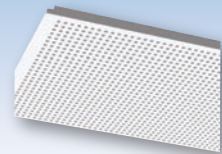
Gyptone tiles are produced in four different edge designs, suitable for both exposed and concealed grids, and in several patterns and formats. The tiles have perforations which, together with the acoustic backing tissue, provide excellent acoustic properties.


**Gyptone 11**

Size : 600x600mm  
 Thickness:10/12.5mm  
 Perforation: 6.5mm Round  
 Edges : square/recessed/concealed


**Gyptone Quattro 70**

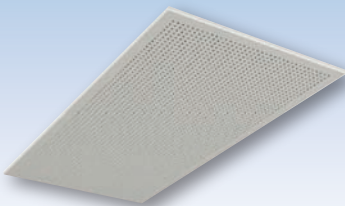
Size : 600x600mm  
 Thickness:10/12.5mm  
 Perforation: 3x3mm Square  
 Edges : square/recessed/concealed


**Gyptone Quattro 20**

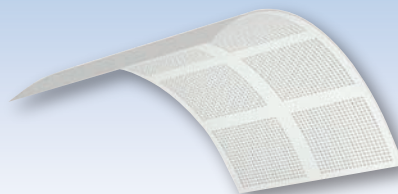
Size : 600x600mm  
 Thickness:10/12.5mm  
 Perforation: 9x9mm Square  
 Edges : square/recessed/concealed

Gyproc acoustic ceilings and walls range includes Gyptone Activ'Air and Rigitone products. Both are perforated gypsum based products and provide high quality sound absorption. Gyptone Activ'Air products are available in boards, tiles, planks and traps whereas Rigitone products come in a range of boards for a seamless finish.

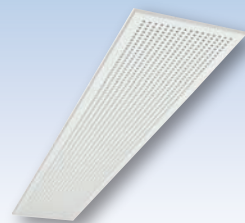
Sustainable choice for use in schools, hospitals, shopping malls, offices and any large open atria's; Available in many styles and designs contributing to aesthetics, acoustics and indoor environment robust, easy to install and maintain. Makes sound clear and audible.


**Rigitone 8/18Q / 6/18**

Size : 1188x1988mm  
 Thickness:12.5mm  
 Perforation: 8x8mm Square  
 6mm Round


**Gyptone BIG Curve Quattro 41**

Size : 1200x2400mm  
 Thickness:12.5mm  
 Perforation: 12x12mm Square


**Gyptone Plank Point 15-1800mm**

Size : 1800x300mm  
 Thickness:12.5mm  
 Perforation: 6.5mm Round

Vinyl-faced gypsum tiles suitable for use in hygiene and retail interiors. High light reflectance, excellent sound attenuation and antibacterial performance available.

Gyproc Access Panels are purpose-designed for use in Gyproc framed systems where there is a requirement to access services for maintenance purposes. Available as wall or ceiling panels they can be specified in commercial, industrial, public and residential buildings.


**Vinyl Faced Gypsum Ceiling Tiles**

Size : 600x600mm  
 Thickness: 9/12mm  
 Edges: Square


**Gyptone BIG AccessPanel Quattro 71**

Size : 500x500mm  
 Thickness:12.5mm  
 Perforation: 3x3mm Square


**Gyproc Aluminum AccessPanel**

Size : 300x300/400x400/450x450  
 600x600/600x900/600x1200



TechnoMec was established since 1995 in Dubai, UAE, with the goal of manufacturing quality products at reasonable prices that go beyond the basic expectations of the customer. The outstanding technology and quality have propelled TechnoMec to become a leader in the field of building industry. Its products are regularly specified by leading international consultants in the UAE, other GCC markets, Asia and North Africa.



**Aluminum open cell suspended ceiling**

Size: 50x50mm squares  
100mm Height x10mm base



**Aluminum Plain Perforated Layin Tile**

Size: 600 x 600mm  
600 x 1200mm



**Aluminum Plain Perforated Clipin Tile**

Size: 600 x 600mm  
600 x 1200mm

Vinyl Facing Gypsum Ceiling Tiles are manufactured from premium quality plaster board, a layer of PVC on surface, aluminum foil on its back, and excellent kind of glue paste. The product is available in various elegant designs suitable for different applications and usages.



**Vinyl Faced Gypsum Ceiling Tiles**

Size: 600x600mm Thickness: 8/9/12mm



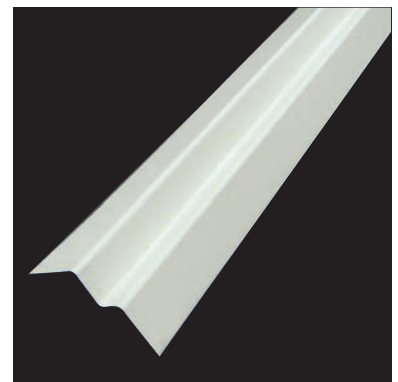
**T-24 Tee Bar Grid Systems**

Capping : Pre-Painted Steel  
Aluminium



**Wall Angles**

Size: 25x25mm x 3 Mtr  
Available in Pre-Painted Steel  
Aluminium

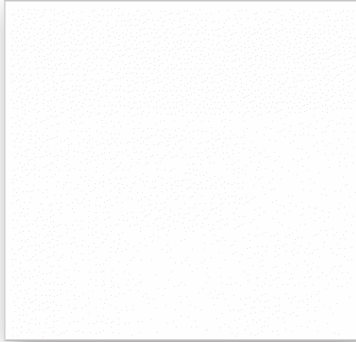


**Shadowline Wall Angles**

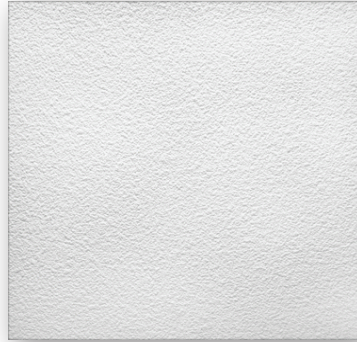
Size: 19x19x19x19mm x 3 Mtr  
Available in Pre-Painted Steel  
Aluminium



ALTERON is a company with more than 30 years of experience dedicated to the manufacture of prefabricated plaster, offers a wide range of possibilities adapted to the new market trends, as well as a commitment to quality and benefits. The adaptation of new technologies to the artisan tradition of plaster is the key to the success of the ALTERON products, will satisfy both construction professionals and the end customer.


**GRG Ceiling Tiles Liso**

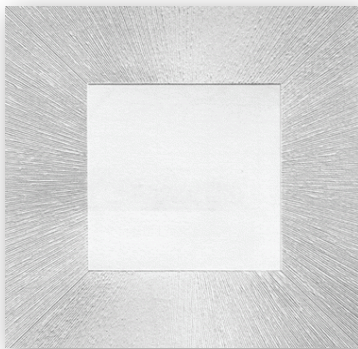
Size: 600x600mmx20mm Thick  
Edges: Tegular/Square


**GRG Ceiling Tiles Dial**

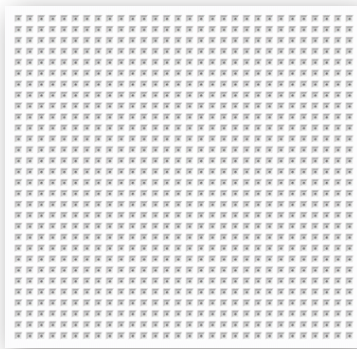
Size: 600x600mmx20mm Thick  
Edges: Tegular/Square


**GRG Ceiling Tiles Cosmos**

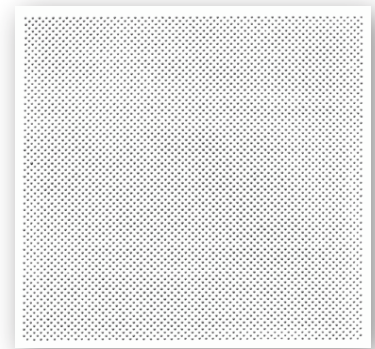
Size: 600x600mmx20mm Thick  
Edges: Tegular/Square


**GRG Ceiling Tiles Mediterraneo**

Size: 600x600mmx20mm Thick  
Edges: Tegular/Square


**GRG Ceiling Tiles Bio Semiperforado**

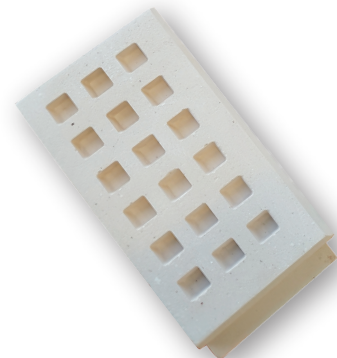
Size: 600x600mmx20mm Thick  
Edges: Tegular/Square


**GRG Ceiling Tiles Keeps Semiperforado**

Size: 600x600mmx20mm Thick  
Edges: Tegular/Square


**GRG Plain Board**

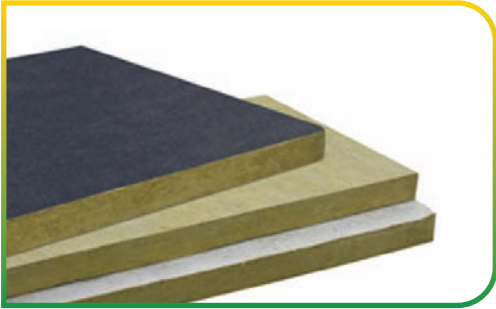
Size: 1200x2400 mm  
Edges: Tegular/Square


**GRG Perforated Board**

Size: 1200x2400 mm  
Edges: Tegular/Square

Saudi Rock Wool Factory/KIMCO ISOVER/FRF is 4 in 1 insulation solutions which deliver superior thermal, fire, acoustic and sustainable performance provides the local and international market with numerous thermal insulation, construction and industrial materials.

Thermal insulation and energy saving (power/energy conservation) is one of our modern civilization concerns, for its positive role in conserving the environment and the national economy. Scientific research and studies proved that use of thermal insulation in buildings will dramatically reduce the heat transferred through the walls and roofs. Thus it has a major contribution in saving the electric power/energy needed to cool/heat the place. Based on the above, rules and regulation were adopted, making thermal insulation in private or public buildings mandatory. The thermal resistance of walls and ceiling was specified to suit the geographical region of most countries.



### Rockwool Panel

Size: 600x1200  
 Thickness: 25-150mm  
 Density : 35-200Kg/m<sup>3</sup>  
 Facing : None/BFG/FSK  
 Product Standard: ASTM C 612 / C 665 / C 553



### Rockwool Blanket

Size: 1200x5000-10000mm  
 Thickness: 25-100mm  
 Density : 35-70Kg/m<sup>3</sup>  
 Facing : None/BFG/FSK  
 Product Standard: ASTM C 665 / C 553



### Rockwool Mattress

Size: 1200x4000 mm  
 Thickness: 25-200mm  
 Density : 70-150Kg/m<sup>3</sup>  
 Facing : G.I & S.S Wire Mesh  
 Product Standard: ASTM C 592/BS 3958 Part-3



### Rockwool Pipe

Size: 1/2"-24"x1.2mtr Length  
 Thickness: 25-150mm  
 Density : 100-150Kg/m<sup>3</sup>  
 Facing : None/FSK  
 Product Standard: ASTM E136/BS EN 1182

AFICO / Knauf / Glass Rock are manufacturers of fiber glass, also known as glass wool, for thermal and acoustical insulation products. Fiberglass insulation is made from molten sand with recycled glass and other inorganic materials under highly controlled conditions.

Fiberglass is non-combustible and will not support the growth of mildew, mold or bacteria when tested in accordance with the specifications of the American Society for Testing and Materials (ASTM C665).

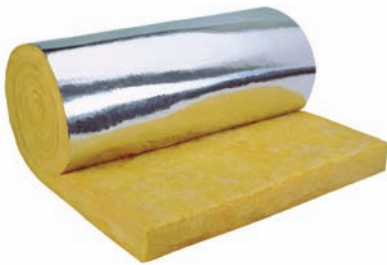


### Mechanical Board Insulation

Size: 1000x1200 mm  
 Thickness: 25-100mm  
 Density : 24-96Kg/m<sup>3</sup>  
 Facing : FRK  
 Product Standard: ASTM C 612

### Mechanical Board Insulation

Size: 1000x1200 mm  
 Thickness: 25-100mm  
 Density : 24-96Kg/m<sup>3</sup>  
 Facing : None  
 Product Standard: ASTM C 612

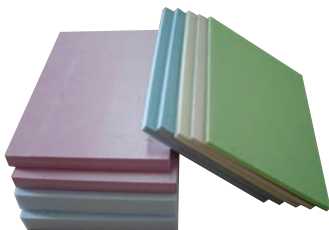


### Pre-Engineered Metal Building Insulation

Size: 1200x20000 mm  
 Thickness: 25-150mm  
 Density : 10-24Kg/m<sup>3</sup>  
 Facing : FRK  
 Product Standard: ASTM C 518

### Pre-Engineered Metal Building Insulation

Size: 1200x20000 mm  
 Thickness: 25-150mm  
 Density : 10-24Kg/m<sup>3</sup>  
 Facing : None  
 Product Standard: ASTM C 518



  
 الإمارات العربية المتحدة  
 EMIRATES EXTRUDED POLYSTYRENE L.L.C.



STAYROMAX

### Extruded Polystyrene Board Insulation

Size: 1250x600 mm  
 Thickness: 25-100mm  
 Density : 32-45Kg/m<sup>3</sup>

### Expanded Polystyrene Board Insulation

Size: 1200x2400 mm  
 Thickness: 20-100mm  
 Density : 18-45Kg/m<sup>3</sup>



Patta offer a complete range of plasterboard fasteners to be used in the application of our system. A part of the complete range includes a full variety of plasterboard screws that are black zinc coated to prevent rusting which can be a common problem with uncoated screw. which have been tested to international standards for anti-rust, corrosion, pull out strength and screw ability.



**Drywall Screw**  
Size 1/2" - 4"



**Self Drilling Screws  
Truss Head**  
Size 1/2" x 8



**Tie Wire Anchor**  
Size 6mmx60mm



**Safety Nail**  
Size : 6mmx40mm



**Insulation Anchor**  
Size : 10mmx90/120/150mm



**HSS Drill Bits**  
Size : 1mm -20mm



**SDS Plus Drill Bits**  
Size : 4mm -25mm



**Aviation Snip**  
Left/Right/Straight



**Masking-Tape**  
Size : 1/2 " x 4"



**Paper Joint Tape**  
Size : 52 mm x 76.6mtr



**Self Adhesive Mesh Joint Tape**  
Size : 50mm x 90 mtr

DEWALT® Drywall solutions include professional Screw Driver/Cordless/ Percussion/Hammer Drills & Self Levelling & Laser Meters built for any professional drywall job. Our tools help get the job done with attention to the right ergonomics, speed of application and runtime professionals need. Get the job done with DEWALT®'s drywall solutions.

**DW 274K**

Drywall Screwdriver

**DCD771C2**

18V XR Li-Ion Drill Driver

**DWD 024**

13mm Percussion Drill

**D 25134K**

26 mm 3 Mode Hammer with QCC

**DW03050 -XJ**

Laser Distance Meter 50 M

**DW079KPH**

Self -Levelling Rotary Laser Kit

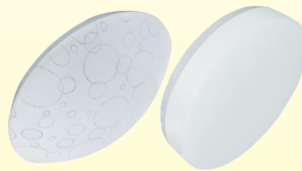
With 300+ products across categories, RR offers a comprehensive array of consumer and industrial creations. Every product stands proud for its design, style, comfort and performance needs.



**LED Panels 60x60**  
(IP20 & 44)



**LED Down Light**



**LED Ceiling Light**  
(IP20)



**Aluminum Louver Light**



**Building, Panel Wires  
and Flexible Cables**



**LED Candle Lamps**  
(E14 & E27)



**Plugtop**  
(13 & 15 Amps)



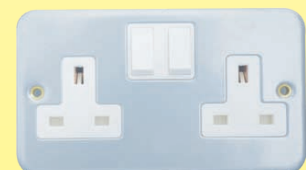
**Extension Sockets**  
(3 Gang, 4 Gang, 5 Gang (3m & 5m))



**Industrial Type Cable Reel**  
Size: 25m & 50m



**Industrial Plug & Sockets**  
3 Pins, 4 Pins & 5 Pins, 16, 32 & 63 Amps



**Metal Clad Switches & Sockets**



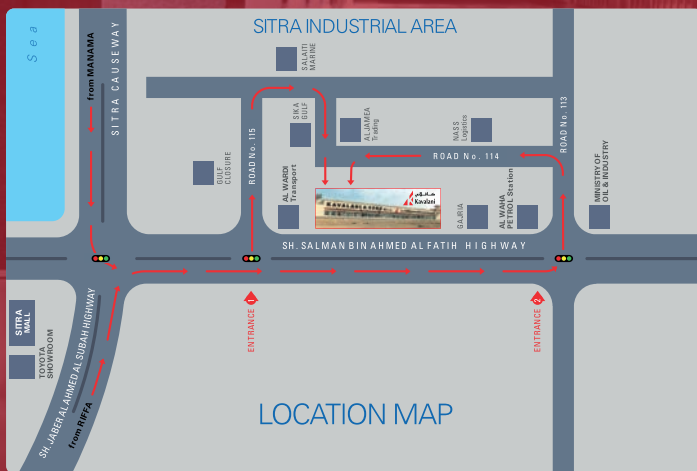
## Kavalani & Sons HIDD



### (Head Office/Showroom)

P.O. Box 71, Bldg. No. 2513, Road 1535, Hidd 115  
Bahrain Investment Wharf, Kingdom of Bahrain  
Tel: +973 6999 0222, Fax: +973 6999 0220, E-Fax: +973 1791 0675

## Kavalani & Sons SITRA



### (Branch Office/Showroom)

Bldg. No. 775, Road 114  
Sitra Industrial Area, Entrance 1, Sitra 601, Kingdom of Bahrain  
Tel: +973 1773 2888, Fax: +973 1773 7379

 [info@kavalani.com](mailto:info@kavalani.com)  [www.kavalani.com](http://www.kavalani.com)

 /kavalaniwll

 /kavalani\_bahrain

 /kavalani-and-sons

 #3800 0458